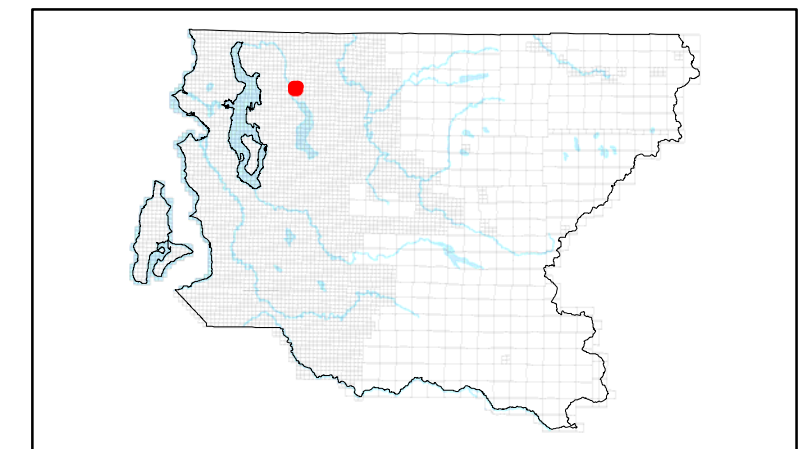


- Control
- RightOfWay
- Plat
- ShortPlat
- OriginalShortPlat
- Parcel
- Easement
- Survey
- GovernmentLot
- Hydro
- DonationLandClaim
- Proposed

- Parcel
- Platted Major Number
- City

The information included on this map has been compiled by King County staff from a variety of sources and is subject to change without notice. King County makes no representations or warranties, express or implied, as to accuracy, completeness, timeliness, or rights to the use of such information. King County shall not be liable for any general, special, indirect, incidental, or consequential damages including, but not limited to, lost revenue or lost profits resulting from the use or misuse of the information contained on this map. Any sale of this map or information on this map is prohibited except by written permission of King County. This map is for assessment purposes only. It is provided to assist in locating your property and is not guaranteed to show accurate measurements or to reflect stability or suitability of tax parcels. Do not use for survey purposes.

NE 02-25-05	NW 01-25-05	NE 01-25-05
SE 02-25-05	SW 01-25-05	SE 01-25-05
NE 11-25-05	NW 12-25-05	NE 12-25-05



SW 01-25-05

1 inch = 100 feet
Date: 10/3/2023

