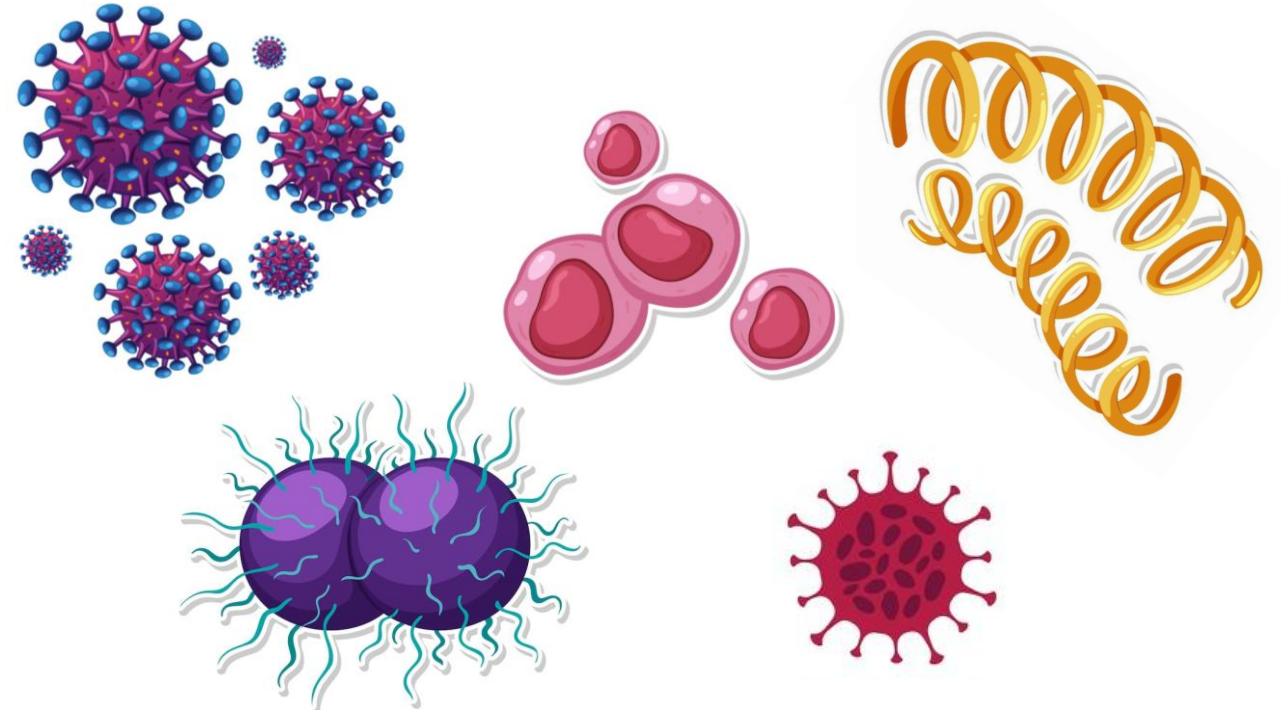


BOARD OF HEALTH  
ADDITIONAL  
MEETING  
MATERIALS  
MAY 21, 2026

# INNOVATIONS IN SEXUAL HEALTH

Board of Health

May 21, 2026



**Chase Cannon, MD, MPH**  
Assistant Professor, Dept. of Medicine, University of Washington  
Medical Director, PHSKC Sexual Health Clinic  
Medical Officer, HIV/STI/HCV Program, PHSKC Prevention Division

**Christopher Archiopoli, MBA**  
King County Board of Health  
Community Stakeholder

King County Board of Health -- May 21, 2026



**yeztugo**  
(lenacapavir) injection 463.5mg/  
1.5mL

**CABENUVA**  
cabotegravir 200 mg/mL; rilpivirine 300 mg/mL  
extended-release injectable suspensions

Kimanie  
On CABENUVA  
since 2023

Prescription CABENUVA is given as 2 injections by a healthcare provider at each visit.

**mistr**

**FREE ONLINE PrEP, DoxyPEP & STI TESTING**  
mistr.com

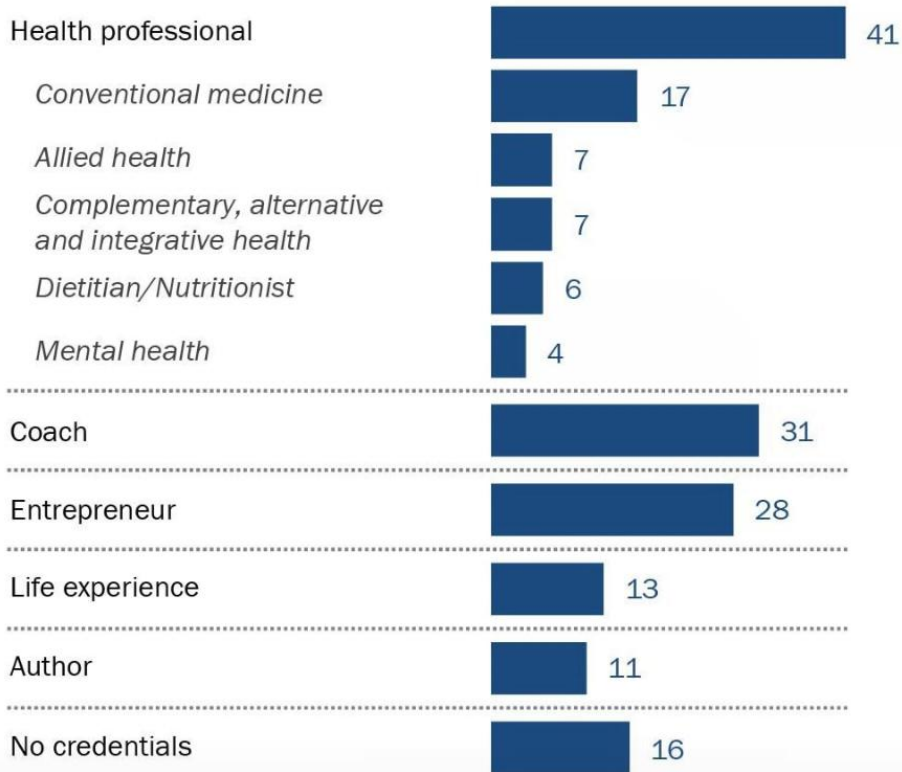
**HELPS GIVE YOU 2 MONTHS  
OF CONTINUOUS PROTECTION  
WITH EACH INJECTION**  
after 2 once-monthly starter doses

APRELUDE is given by a doctor. Stay under their care while receiving it.


**Aprelude**

## Who are health and wellness influencers?

% of health/wellness influencers who say they are a(n) \_\_\_ in their social media bio



Source: Pew Research Center analysis of 6,828 influencers with over 100,000 followers who regularly posted about health and wellness on Instagram, TikTok or YouTube in mid-2025.

Pew Research Center 

Board of Health



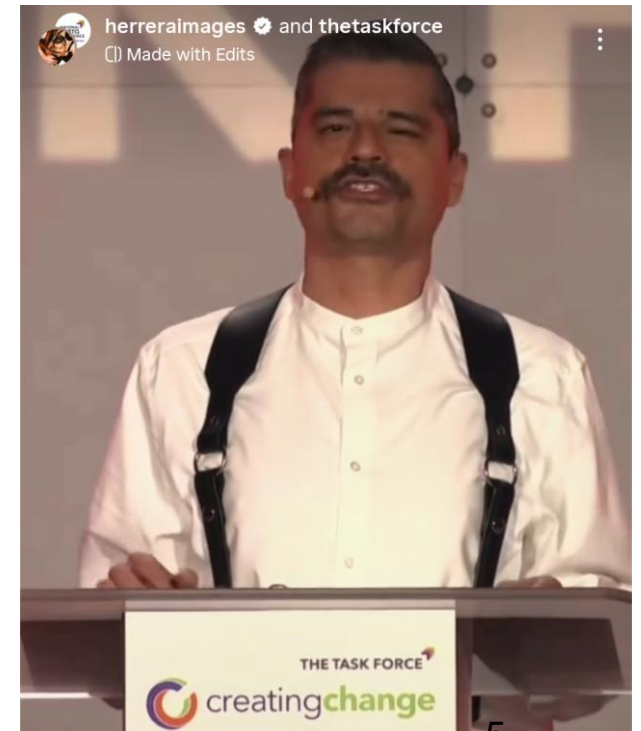
You've probably gotten health/wellness advice from someone online. But who are they?



4 in 10 Americans get this info from **influencers** or **podcasts**.

May 21, 2026

Pew Research Center 



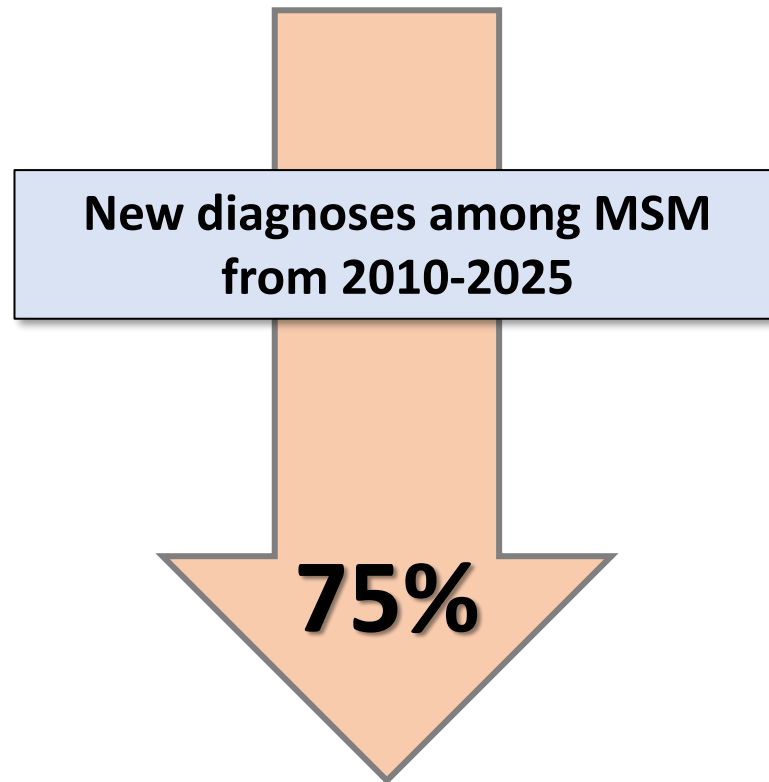
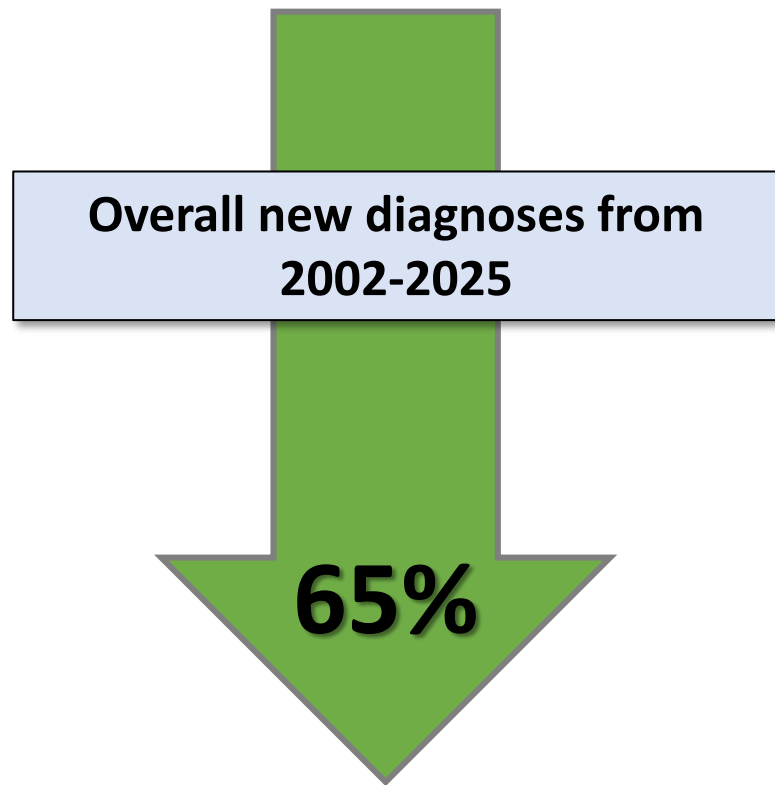
# Progress and Innovation in HIV & STI Control



# Overview

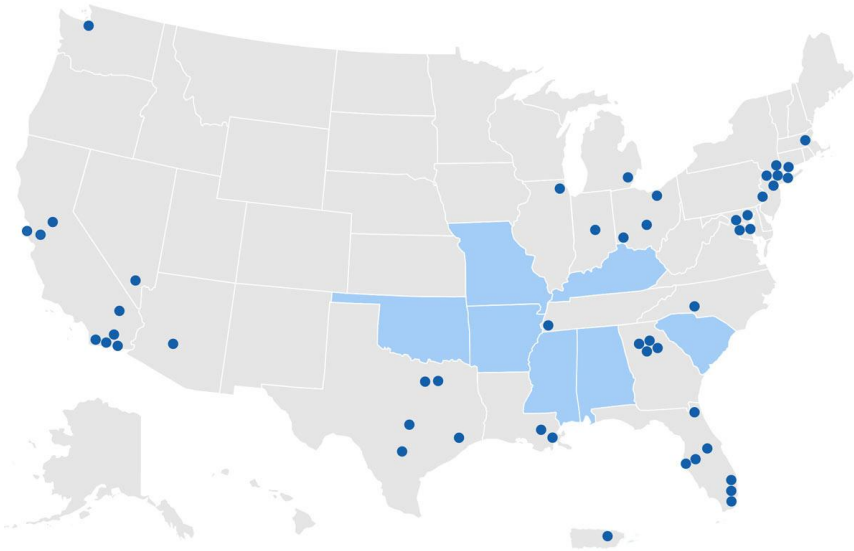
- State of HIV in Seattle-King County
- Progress on Ending the HIV Epidemic
  - Diagnose
  - Treat
  - Prevent
  - Respond
- Trends in Sexually Transmitted Infections
  - Syphilis and Congenital Syphilis
  - Doxycycline postexposure prophylaxis (doxy-PEP)

# Extraordinary progress reducing new HIV diagnoses in King County



***Lowest numbers since the start of the HIV epidemic in the 1980s***

# Ending the HIV Epidemic



**Diagnose** all people with HIV as early as possible.

**Treat** people with HIV rapidly and effectively to reach sustained viral suppression.



**Prevent** new HIV transmissions by using proven interventions, including pre-exposure prophylaxis (PrEP) and syringe services programs (SSPs).

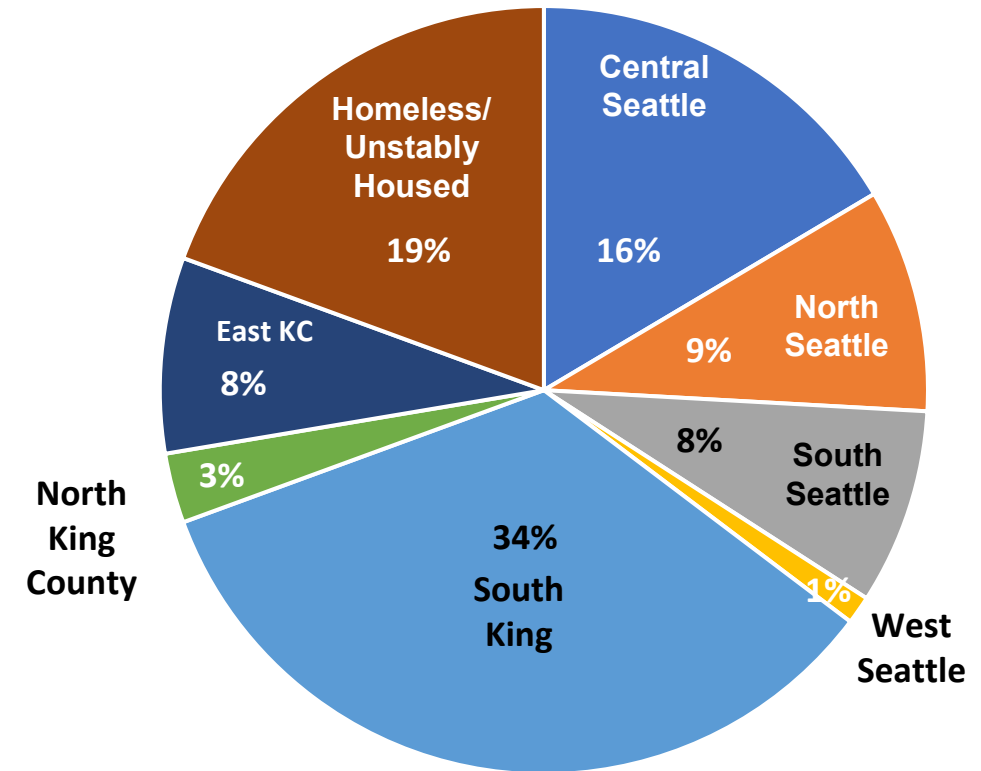
**Respond** quickly to potential HIV outbreaks to get needed prevention and treatment services to people who need them.



**2025 King County and WA State HIV  
Epidemiology Report and Community  
Profile: [kingcounty.gov/hiv/data](https://kingcounty.gov/hiv/data)**

# #1 DIAGNOSE: HIV in King County populations

- Slight ↑ among women in 2024, now ↓ again (21% of all cases)
- Black residents: 36% new diagnoses in 2024-5
- Among MSM: 32% Latino (11% of KC pop.), 25% Black (7.5% of KC pop.)
- ↓ in % of new diagnoses in people with unstable housing since 2018 outbreak
  - >20% of new diagnoses in heterosexual people



# #2 TREAT: Expanded access to low-barrier care

- Differentiated care models – 10% of PLWH received HIV primary care in low-barrier clinics
- Mobile outreach, started in 2023 – improve engagement in care and viral suppression
- Focus on expanding injectable HIV medication (Cabenuva<sup>®</sup>, Sunlenca<sup>®</sup>) access for populations with highest need

Low Barrier Clinic	Number of PLWH
Aurora/SHE – North Seattle	13
MOD Clinic – Central Seattle	324
MAX Clinic – Central Seattle	276

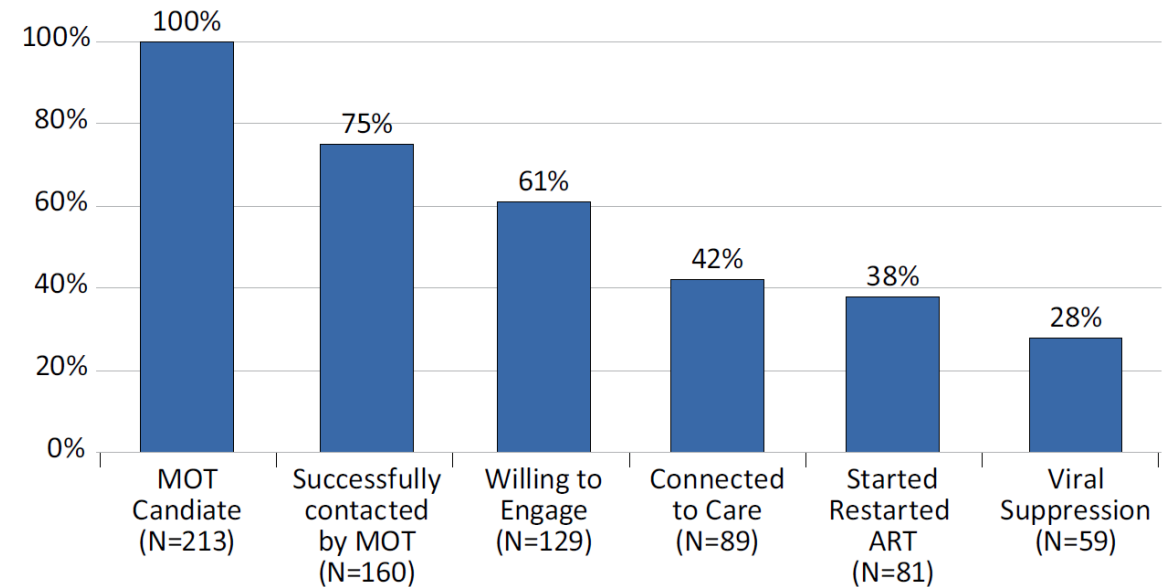


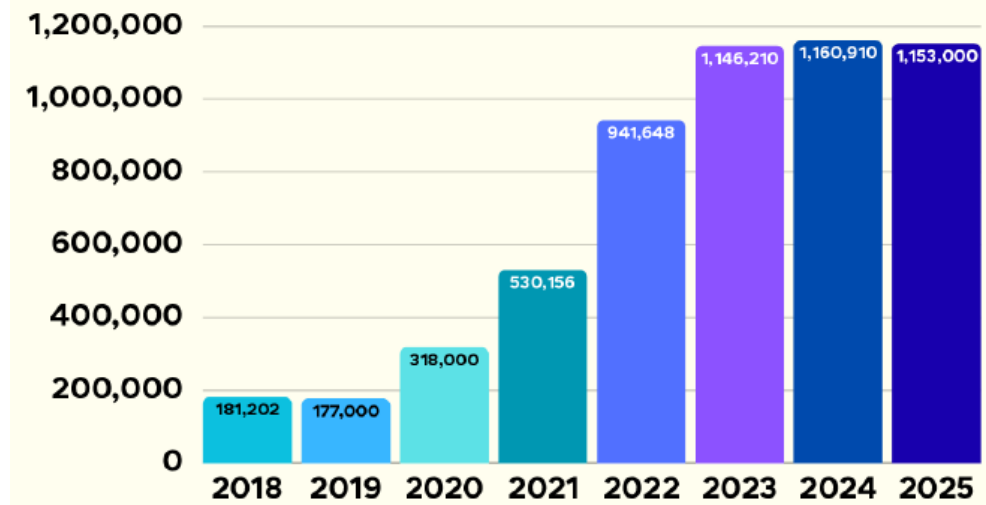
Figure 3-1. Engagement in Care, ART Uptake and Viral Suppression Among MOT Clients, 2024

# #3 PREVENT: Increased access to PrEP, condoms

- New and expanded low-barrier PrEP sites
- PrEP promotion - EHE Healthcare Collaborative
- Nearly 1,300,000 condoms distributed in 2025
- Injectable PrEP for populations with highest risk for HIV
  - Every 6-month injection (Yeztugo®)
  - Every 2-month injection (Apretude®)
- Navigating \$\$ challenges with WA DOH PrEP assistance program
- Harm reduction supplies, Narcan



Number of External Condoms Distributed by Year



# #4 RESPOND: Boost outbreak response capacity

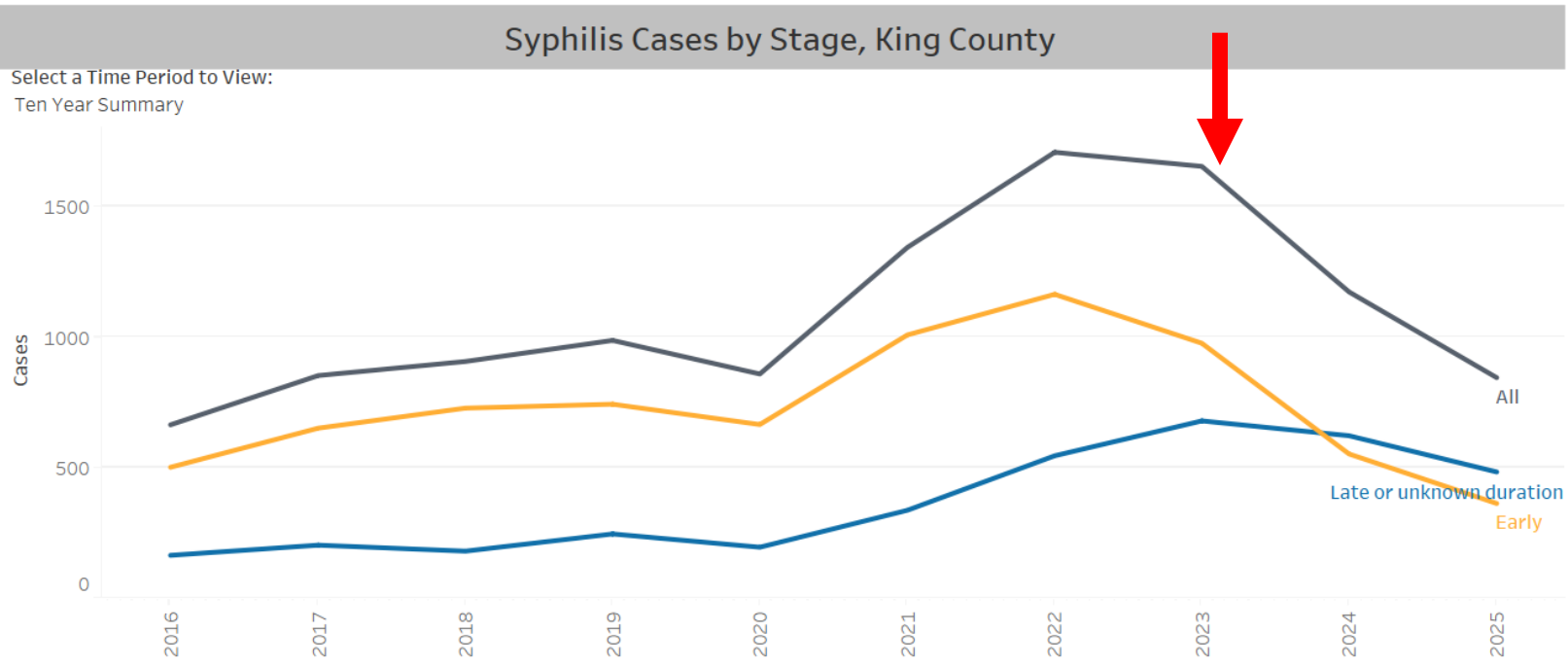
- Focus groups with community to explain cluster detection and response
- Expanded staff capacity to conduct outreach to cluster members, test them for HIV, and link them to PrEP or HIV care

Year of HIV Diagnosis	All		Individuals linked to linked to a rapid cluster growth	
	N	% (col)	N	% (row)
2020	132	20%	35	27%
2021	129	20%	32	25%
2022	138	21%	37	27%
2023	129	20%	30	23%
2024	129	20%	27	21%

# Evolving syphilis epidemic in King County

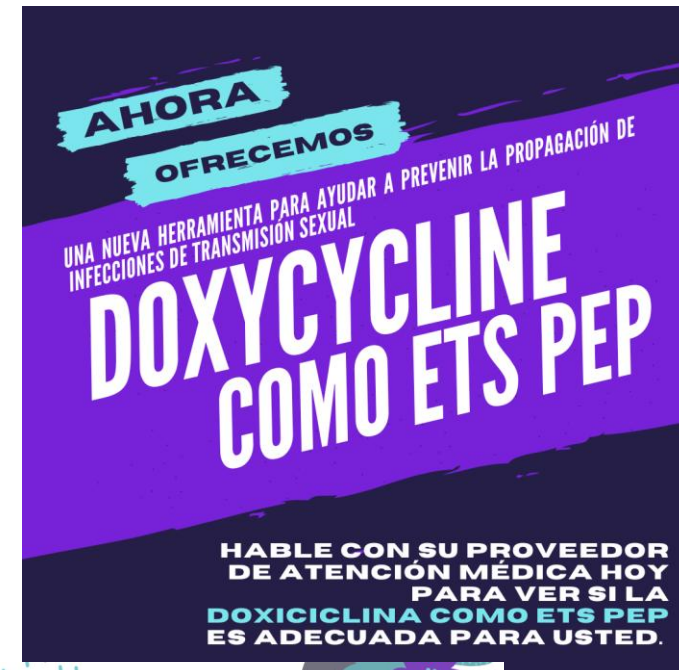
Syphilis cases ↓ in everyone **except** pregnant women, babies (congenital syphilis)

- Interviewees: 26% living homeless, 8% used substances, 68% in South County



# Doxycycline for STI prevention

- **Doxy-PEP (doxycycline post-exposure prophylaxis)**
  - 200mg doxycycline by mouth within 24-72 hrs after condomless sex *reduces chlamydia and syphilis risk by >80%*
  - Primarily studied in MSM and transgender women
  - Sex-positive, user-controlled tool for persons at increased risk for bacterial STI



Morbidity and Mortality Weekly Report (MMWR)

Search



CDC Clinical Guidelines on the Use of Doxycycline Postexposure Prophylaxis for Bacterial Sexually Transmitted Infection Prevention, United States, 2024

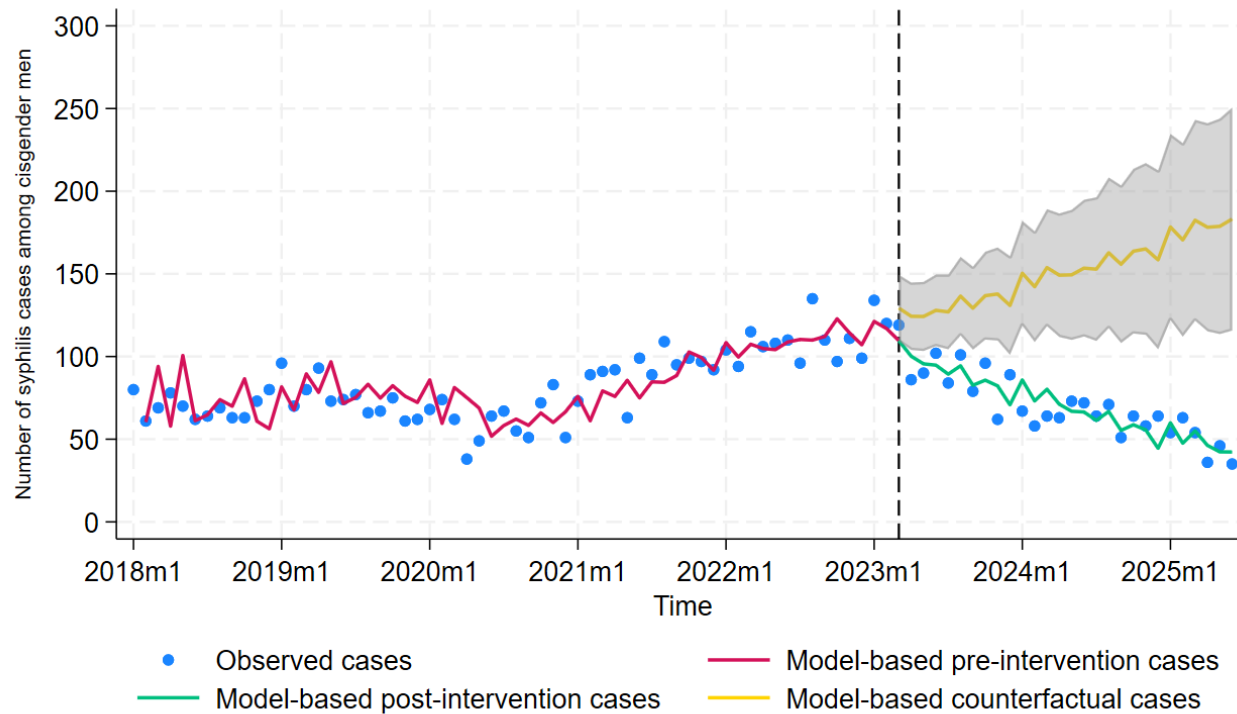
Recommendations and Reports / June 6, 2024 / 73(2);1-8

[Print](#)

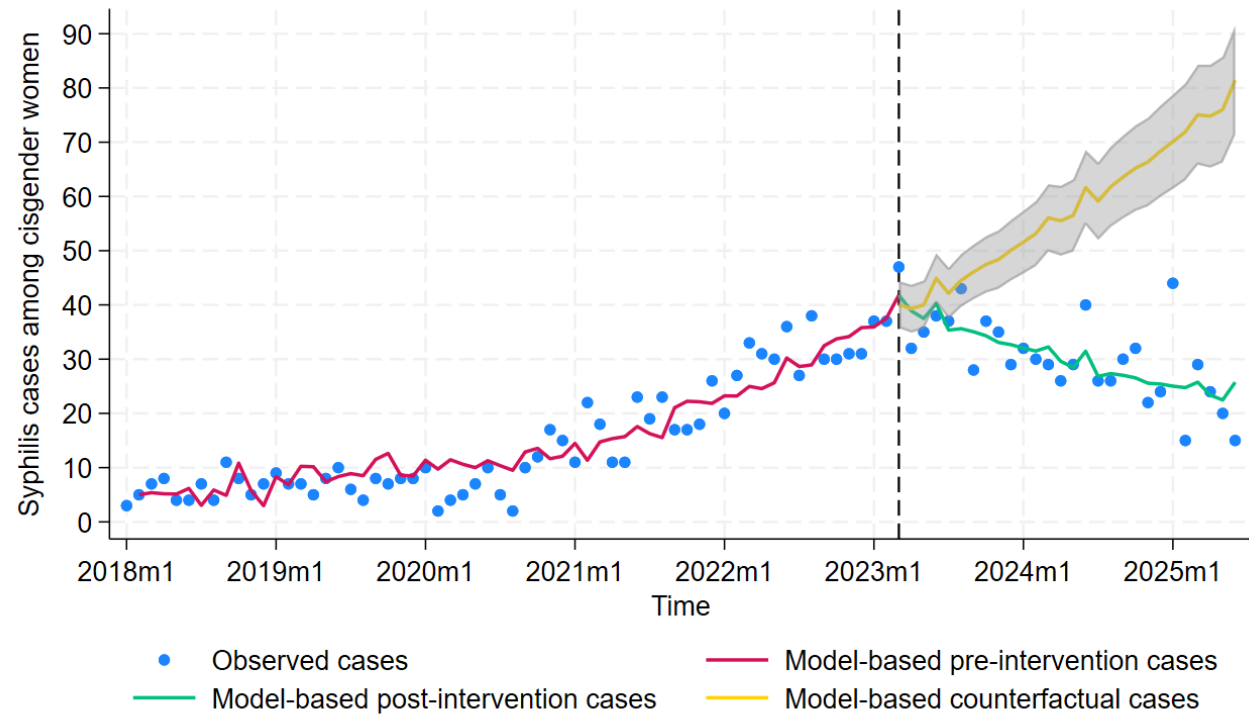
Laura H. Bachmann, MD<sup>1</sup>; Lindley A. Barbee, MD<sup>1</sup>; Philip Chan, MD<sup>1,2</sup>; Hilary Reno, MD<sup>1,3</sup>; Kimberly A. Workowski, MD<sup>1,4</sup>; Karen Hoover, MD<sup>5</sup>; Jonathan Mermin, MD<sup>6</sup>; Leandro Mena, MD<sup>1</sup> ([VIEW AUTHOR AFFILIATIONS](#))

# Syphilis has declined at population level in Seattle-King County after doxy-PEP implementation

Cisgender men – 53% decrease



Cisgender women – 47% decrease



# Summary

- King County has made tremendous progress in reducing HIV diagnoses
- Groups still disproportionately impacted: Black, Latino, Native Hawaiian/Pacific Islander people, South County, persons living unhoused
- Many ongoing activities to address to “End the HIV Epidemic”
- Overall syphilis rates are decreasing, but cases remain high in pregnancy and babies (congenital syphilis)
- Doxy-PEP prevents chlamydia and syphilis, and has contributed to declining syphilis cases in King County



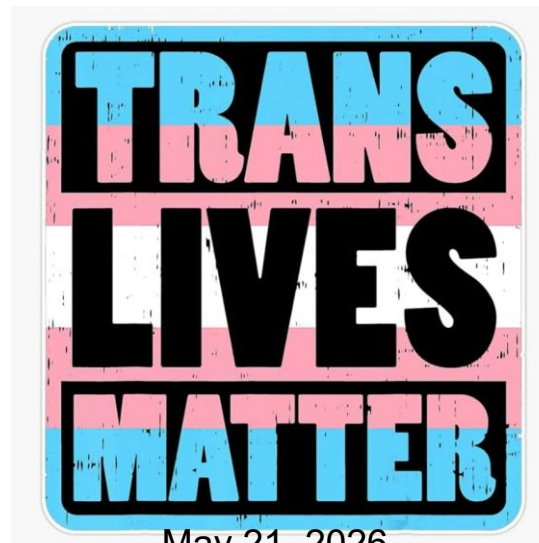
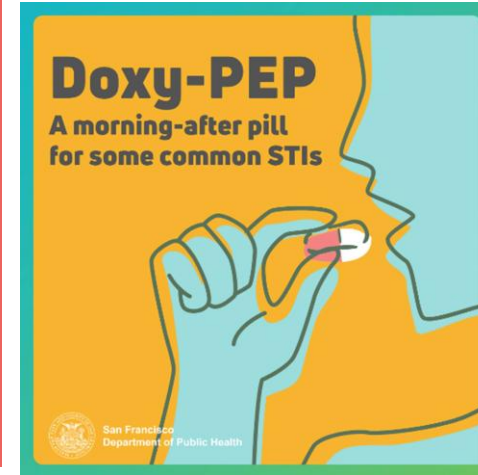
[www.uwptc.org](http://www.uwptc.org)

*Thanks!*

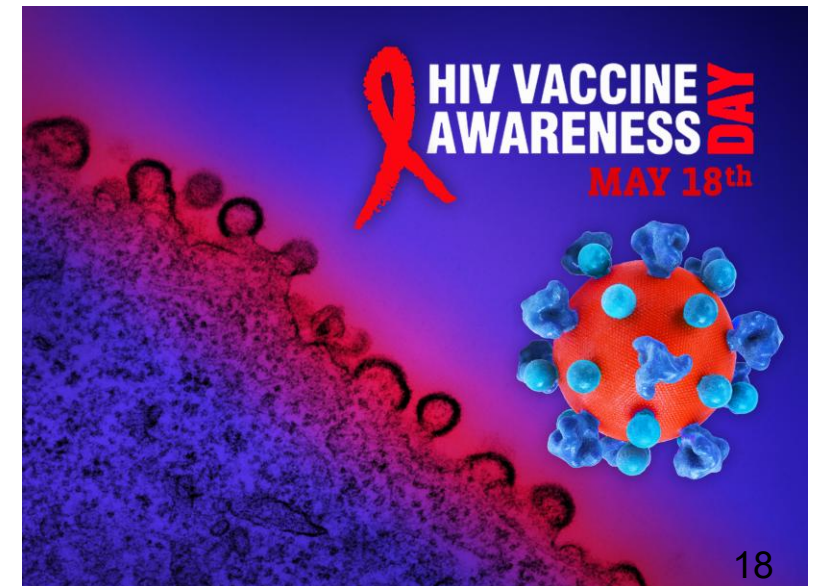
*Questions?*

[KCBOHAdmin@kingcounty.gov](mailto:KCBOHAdmin@kingcounty.gov)

Board of Health



May 21, 2026



18