



King County

1200 King County
Courthouse
516 Third Avenue
Seattle, WA 98104

Meeting Agenda

King County Flood Control District

*Boardmembers: Reagan Dunn, Chair; Sarah Perry, Vice Chair;
Claudia Balducci, Jorge L. Barón, Rod Dembowski,
Steffanie Fain, Rhonda Lewis, Teresa Mosqueda, Pete von Reichbauer*

1:30 PM

Tuesday, February 10, 2026

Hybrid Meeting

The King County Flood Control District will be holding a Hybrid Meeting. You may attend the meeting in person in Council Chambers (Room 1001, 516 3rd Avenue in Seattle), or through remote access.

The Flood Control District values community input and looks forward to hearing from you.

HOW TO PROVIDE PUBLIC TESTIMONY:

1. In person: You may attend the meeting in person in the King County Courthouse Council Chambers.
2. By email: You may testify by submitting a COMMENT EMAIL to info@kingcountyfloodcontrol.org or filling out the General Contact Form at the bottom of the page on the Flood District's webpage: <https://kingcountyfloodcontrol.org/contact-us/>

If your comments are submitted before 10:00 a.m. on the day of the Flood meeting, they will be distributed to the Supervisors and appropriate staff prior to the meeting. Comments submitted after 10:00 a.m. will be distributed after the meeting.

3. Remote attendance on the Zoom Webinar: Paste the following link into the address bar of your web browser: <https://kingcounty.zoom.us/j/83034071240>
4. Join by telephone: Dial: +1 253 215 8782
Webinar ID: 830 3407 1240

HOW TO LISTEN TO THE MEETING:

1. Stream online: input the following web address into your browser: <https://king-county-tv.cablecast.tv/watch-now?site=1>
2. Watch King County TV - Xfinity Channels 322 (HD) / 22 (SD) or Astound Broadband Channels 711 (HD) / 22 (SD)
3. Listen to the meeting by telephone – See "Join by telephone" above.



Sign language and interpreter services can be arranged given sufficient notice (206-848-0355).
TTY Number - TTY 711.
Council Chambers is equipped with a hearing loop, which provides a wireless signal that is picked up by a hearing aid when it is set to 'T' (Telecoil) setting.



1. **Call to Order**
2. **Roll Call**
3. **Approval of Minutes of October 14, 2025, and November 12, 2025** **pg. 4 & 7**
4. **Additions to the Agenda**
5. **Public Comment**

To show a PDF of the written materials for an agenda item, click on the agenda item below.

Briefings

6. FCD Briefing No. FCD2026-B01 **pg. 11**

December 2025 Flood Event

John Taylor, Director, King County Department of Natural Resources and Parks, and a representative from the United States Army Corps of Engineers

Items for Final Action by the Board of Supervisors

7. Substitute FCD Resolution No. FCD2026-03.2 **pg. 35**

A RESOLUTION relating to the operation and finances of the King County Flood Control Zone District; adopting a revised 2026 budget, capital budget, six-year capital improvement program for 2026-2031; and amending Resolution FCD2025-12.

Public Hearing Required

8. FCD Resolution No. FCD2026-01 **pg. 58**

A RESOLUTION of the Board of Supervisors of the King County Flood Control Zone District, amending the rules and operating procedures for the District, Resolution FCD2025-01, Attachment A, as amended.



Sign language and interpreter services can be arranged given sufficient notice (206-848-0355).
TTY Number - TTY 711.
Council Chambers is equipped with a hearing loop, which provides a wireless signal that is picked up by a hearing aid when it is set to 'T' (Telecoil) setting.



9. FCD Motion No. FCD26-01 **pg. 67**

A MOTION relating to the organization of the King County Flood Control Zone District Board of Supervisors.

Other Business

Adjournment



Sign language and interpreter services can be arranged given sufficient notice (206-848-0355).
TTY Number - TTY 711.
Council Chambers is equipped with a hearing loop, which provides a wireless signal that is picked up
by a hearing aid when it is set to 'T' (Telecoil) setting.





King County

1200 King County
Courthouse
516 Third Avenue
Seattle, WA 98104

Meeting Minutes

King County Flood Control District

*Boardmembers: Reagan Dunn, Chair; Sarah Perry, Vice Chair;
Claudia Balducci, Jorge L. Barón, Rod Dembowski,
Teresa Mosqueda, De'Sean Quinn,
Pete von Reichbauer, Girmay Zahiray*

1:30 PM

Tuesday, October 14, 2025

Hybrid Meeting

DRAFT MINUTES

The King County Flood Control District will be holding a Hybrid Meeting. You may attend the meeting in person in Council Chambers (Room 1001, 516 3rd Avenue in Seattle), or through remote access.

The Flood Control District values community input and looks forward to hearing from you.

HOW TO PROVIDE PUBLIC TESTIMONY:

1. **In person:** You may attend the meeting in person in the King County Courthouse Council Chambers.
2. **By email:** You may testify by submitting a **COMMENT EMAIL** to info@kingcountyfloodcontrol.org or filling out the General Contact Form at the bottom of the page on the Flood District's webpage:
<https://kingcountyfloodcontrol.org/contact-us/>

If your comments are submitted before 10:00 a.m. on the day of the Flood meeting, they will be distributed to the Supervisors and appropriate staff prior to the meeting. Comments submitted after 10:00 a.m. will be distributed after the meeting.

3. **Remote attendance on the Zoom Webinar:** Paste the following link into the address bar of your web browser:
<https://kingcounty.zoom.us/s/83034071240>
4. **Join by telephone:** Dial: +1 253 215 8782
Webinar ID: 830 3407 1240

HOW TO LISTEN TO THE MEETING:

Stream online: input the following web address into your browser:
<https://king-county-tv.cablecast.tv/watch-now?site=1>

Watch King County TV - Xfinity Channels 322 (HD) / 22 (SD) or Astound
Broadband Channels 711 (HD) / 22 (SD)

Listen to the meeting by telephone – See "Join by telephone" above.

1. Call to Order

*The meeting was called to order at 2:37 p.m.
Chair Dunn passed the gavel to Vice Chair Perry at 2:58 p.m.*

2. Roll Call

Present: 9 - Balducci, Barón, Dunn, Dembowski, Mosqueda, Perry, Quinn, von Reichbauer
and Zahilay

3. Approval of Minutes of September 9, 2025

*Vice Chair Perry moved to approve the minutes of the September 9, 2025, meeting as
presented. Seeing no objection, the Chair so ordered.*

4. Additions to the Agenda

There were no additions to the agenda.

5. Public Comment

No one signed up to provide public comment.

Items for Final Action by the Board of Supervisors**6. FCD Resolution No. FCD2025-11**

A RESOLUTION of the Board of Supervisors of the King County Flood Control Zone District authorizing King County to execute a real property covenant on certain real property held in the name of the King County Flood Control District.

Charlotte Archer, District Legal Counsel, briefed the Board and answered questions.

A motion was made by Vice Chair Perry that this FCD Resolution be Passed. The motion carried by the following vote:

Yes: 9 - Balducci, Barón, Dunn, Dembowski, Mosqueda, Perry, Quinn, von
Reichbauer and Zahilay

Items for Discussion

7. FCD Resolution No. FCD2025-12

A RESOLUTION relating to the operation and finances of the King County Flood Control Zone District, adopting the 2026 budget and authorizing improvements.

Michelle Clark, District Executive Director, briefed the Board and answered questions.

This matter was Deferred.

8. FCD Resolution No. FCD2025-13

A RESOLUTION relating to the finances of the King County Flood Control Zone District ("District"); authorizing a property tax levy to implement the District's 2026 budget; reserving banked capacity; and protecting up to \$.25 per \$1,000 of assessed value of the District's property tax levy from proration.

Steven Schauer, District Deputy Executive Director, briefed the Board and answered questions.

This matter was Deferred

Other Business

No other business was presented.

Adjournment

The meeting was adjourned at 3:03 p.m.

Approved this _____ day of _____

Clerk's Signature



King County

1200 King County
Courthouse
516 Third Avenue
Seattle, WA 98104

Meeting Minutes

King County Flood Control District

*Boardmembers: Reagan Dunn, Chair; Sarah Perry, Vice Chair;
Claudia Balducci, Jorge L. Barón, Rod Dembowski,
Teresa Mosqueda, De'Sean Quinn,
Pete von Reichbauer, Girmay Zahilay*

1:30 PM

Wednesday, November 12, 2025

Hybrid Meeting

SPECIAL MEETING DRAFT MINUTES

The King County Flood Control District will be holding a Special Hybrid Meeting. You may attend the meeting in person in Council Chambers (Room 1001, 516 3rd Avenue in Seattle), or through remote access.

The Flood Control District values community input and looks forward to hearing from you.

HOW TO PROVIDE PUBLIC TESTIMONY:

1. **In person:** You may attend the meeting in person in the King County Courthouse Council Chambers.
2. **By email:** You may testify by submitting a **COMMENT EMAIL** to info@kingcountyfloodcontrol.org or filling out the General Contact Form at the bottom of the page on the Flood District's webpage:
<https://kingcountyfloodcontrol.org/contact-us/>

If your comments are submitted before 10:00 a.m. on the day of the Flood meeting, they will be distributed to the Supervisors and appropriate staff prior to the meeting. Comments submitted after 10:00 a.m. will be distributed after the meeting.

3. **Remote attendance on the Zoom Webinar:** Paste the following link into the address bar of your web browser:
<https://kingcounty.zoom.us/j/82586668997>
4. **Join by telephone:** Dial: +1 253 215 8782
Webinar ID: 825 8666 8997

HOW TO LISTEN TO THE MEETING:

Stream online: input the following web address into your browser:

<https://king-county-tv.cablecast.tv/watch-now?site=1>

**Watch King County TV - Xfinity Channels 322 (HD) / 22 (SD) or Astound
Broadband Channels 711 (HD) / 22 (SD)**

Listen to the meeting by telephone – See "Join by telephone" above.

1. Call to Order

The meeting was called to order 1:38 p.m.

2. Roll Call

Present: 6 - Barón, Dunn, Dembowski, Mosqueda, Perry and Quinn

Excused: 3 - Balducci, von Reichbauer and Zahilay

3. Public Comment

No one signed up to provide public comment.

Items for Final Action by the Board of Supervisors

4. FCD Resolution No. FCD2025-12

A RESOLUTION relating to the operation and finances of the King County Flood Control Zone District, adopting the 2026 budget and authorizing improvements.

Michelle Clark, District Executive Director, briefed the Board and answered questions.

Vice Chair Perry moved Striking Amendment S1.

Vice Chair Perry made a motion to verbally amend Striking Amendment S1, on Line 103, strike "July" and Insert "October" and to amend Striking Amendment S1, on line 119, after "support", delete the remainder of Section 16, and insert "Earth Corps." The motion carried.

Voting on Striking Amendment S1, as amended, the motion carried.

A Public Hearing was held and closed. A motion was made by Vice Chair Perry that this FCD Resolution be Passed as Amended. The motion carried by the following vote:

Yes: 6 - Barón, Dunn, Dembowski, Mosqueda, Perry and Quinn

Excused: 3 - Balducci, von Reichbauer and Zahilay

5. FCD Resolution No. FCD2025-13

A RESOLUTION relating to the finances of the King County Flood Control Zone District ("District"); authorizing a property tax levy to implement the District's 2026 budget; reserving banked capacity; and protecting up to \$.25 per \$1,000 of assessed value of the District's property tax levy from proration.

Steven Schauer, District Deputy Executive Director, briefed the Board and answered questions.

Vice Chair Perry moved Striking Amendment S1. The motion carried.

Vice Chair Perry moved Title Amendment T1. The motion carried.

A Public Hearing was held and closed. A motion was made by Vice Chair Perry that this FCD Resolution be Passed as Amended. The motion carried by the following vote:

Yes: 6 - Barón, Dunn, Dembowski, Mosqueda, Perry and Quinn

Excused: 3 - Balducci, von Reichbauer and Zahilay

6. FCD Resolution No. FCD2025-14

A RESOLUTION of the Board of Supervisors of the King County Flood Control Zone District approving a template for grant agreements related to the administration of the King County Flood Control Zone District's Lake Sammamish Dock and Shoreline Grant Program.

Charlotte Archer, District Legal Counsel, briefed the Board and answered questions.

A motion was made by Vice Chair Perry that this FCD Resolution be Passed. The motion carried by the following vote:

Yes: 6 - Barón, Dunn, Dembowski, Mosqueda, Perry and Quinn

Excused: 3 - Balducci, von Reichbauer and Zahilay

Adjournment

The meeting was adjourned at 2:26 p.m.

Approved this _____ day of _____

Clerk's Signature

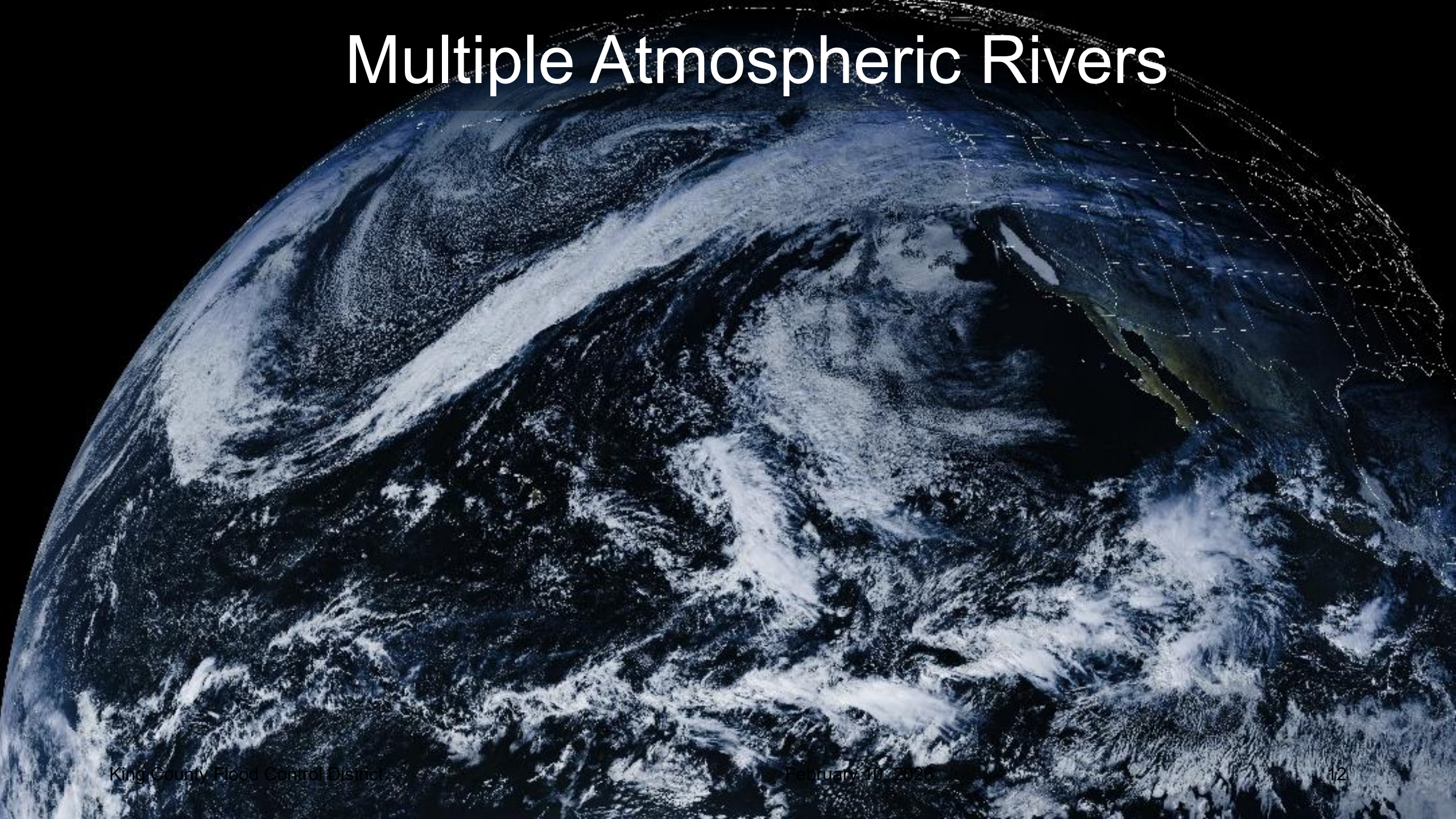


KING COUNTY
FLOOD CONTROL
DISTRICT

December 2025 Flood

February 10, 2026






Multiple Atmospheric Rivers



Background

Monitor six rivers and Issaquah Creek with five flood phases

Flood phase

Phase	Expected impact
 0	No flooding expected
 1	King County staff are on alert and preparing for a possible flood event.
 2	Minor flooding expected
 3	Moderate flooding expected
 4	Severe flooding expected

- Flood Warning Center opens at phase 2
- Flood Patrol dispatched at phase 3

Historic Flood

Phase 4: Severe flooding

- ★ • Cedar River
- Green River
- Snoqualmie River
- ★ • South Fork Skykomish River
- White River
- Issaquah Creek

Phase 3: Moderate flooding

- Tolt River



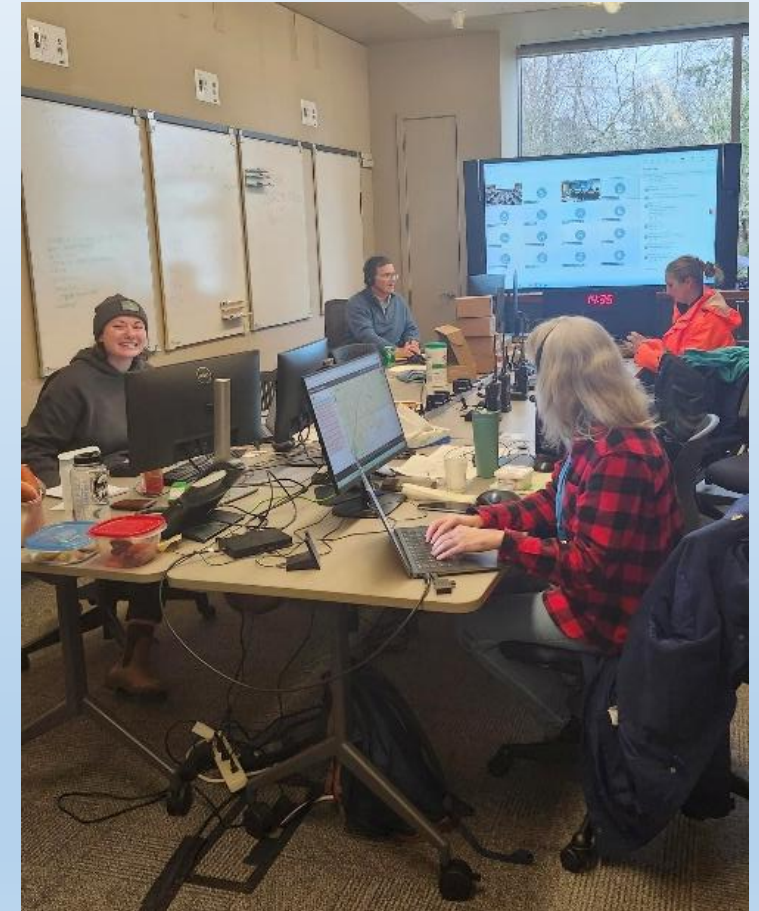
Byers Neighborhood on Cedar River, Dec. 2025



Longest Flood in Memory

Flood Warning Center

- Open Dec. 8 to Dec. 30.
- Open 24/7, 482 hours total.
- 44 County staff worked at least one shift.
- Primarily onsite at the Emergency Operations Center.



Flood Warning Center, Dec. 2025

Longest Flood in Memory

Flood Patrol

- County staff patrolled Dec. 8. to 23.
- National Guard patrolled independently Dec. 24 to 30.
- 88 County staff worked at least one patrol shift.
- 1092 miles patrolled.



Collaborative Response

- Water and Land Resources Division
- Road Services Division
- Office of Emergency Management
- King County Sheriff's Office
- Cities, especially Kent, Tukwila and Pacific
- U.S. Army Corps of Engineers
- Washington State
- Flood Control District

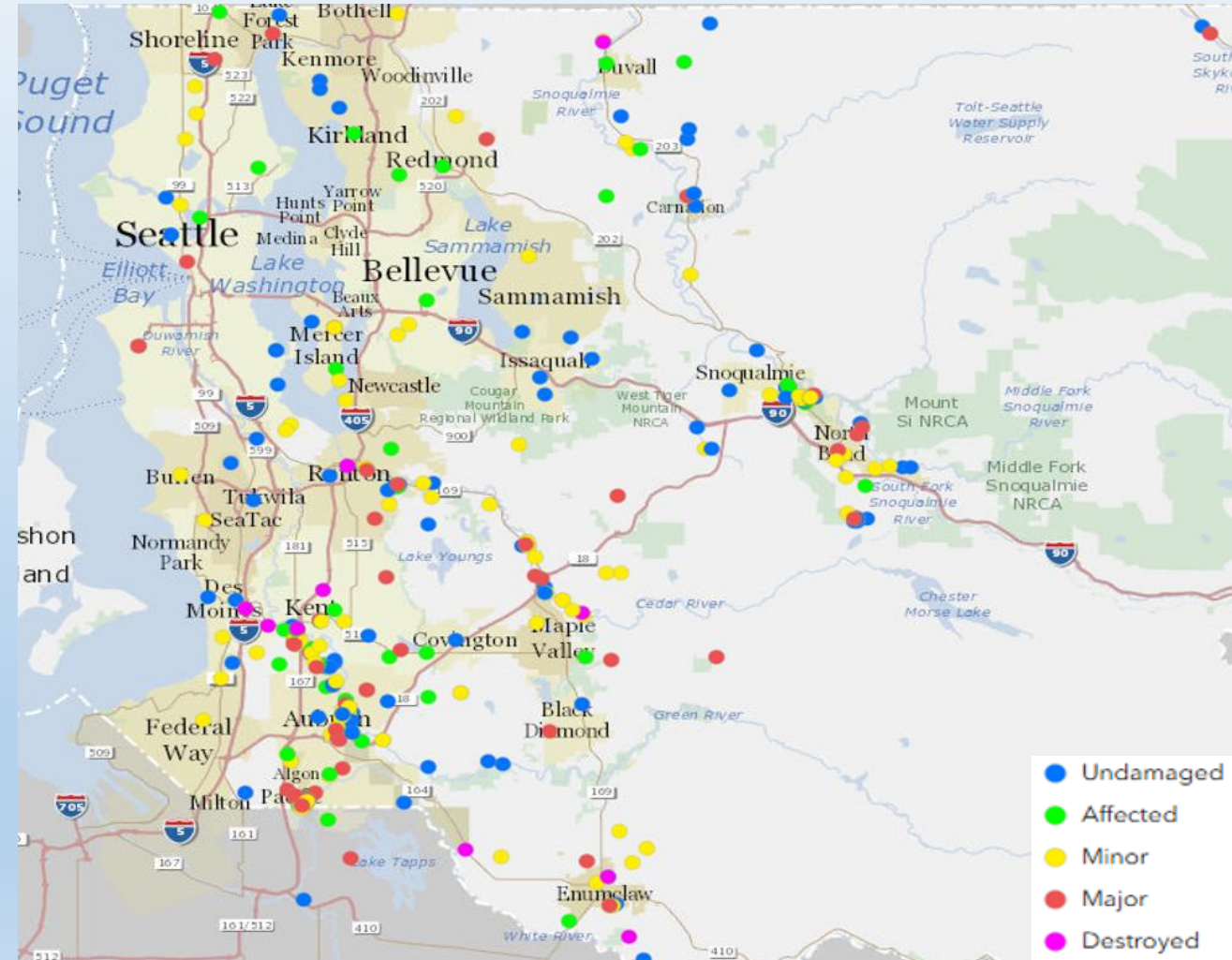
Program Adjusted in the Second Week

- Trained 42 people for the Flood Warning Center.
- Trained more than 50 National Guard members for Flood Patrol.
- Created a 24/7 Rapid Engineering Assessment Team.
- Created a GIS map of where materials were staged across the county.
- Rapid Response Packages staged in Federal Way in coordination with State.
- Conducted 16 repairs during and in the weeks following the flood.

Damage Countywide

- No lives lost.
- Residential
 - 398 submitted reports of damage.
 - 14 structures destroyed.
 - 73 experienced major damage.
- Business
 - 62 submitted reports of damage.
 - \$10.5M estimated inventory/equipment loss.
 - \$3.8M estimated structure loss.

King County Flood Control District



February 10, 2026

Damaged residential structures

Extensive Damage to River Facilities

- 16 emergency repairs during and immediately following December flood.
- Post-flood inspections completed mid-January.
- About 25% of 509 river facilities damaged.

16 Emergency Repairs

- 7 sites on the Green River
- 5 sites on the White River
- 3 sites on the Cedar River
- 1 site on the S. Fork Skykomish River

Examples of Emergency Repairs

Sinkhole Repair

Green River – Tukwila 205 Levee



Emergency Revetment Reconstruction Cedar River – Tabor Crowall



Levee Breach

Green River – Desimone Levee



King County Flood Control District



February 10, 2026

Seepage Blanket Installation Green and White Rivers



Somes Dolan Levee, Dec. 16, 2025
King County Flood Control District



Oravetz School Revetment, Dec. 31, 2025
February 10, 2026

HESCO Repair and Installation White River



King County Flood Control District
A Street Trailer Court



Pacific Park
February 10, 2026



4th Avenue
27

HESCO Repair and Installation

White River at Pacific



Next Steps

- Assessment of inspection results underway.
- Will work with the FCD to prioritize repairs and capital work starting in March.
- Pursue Federal dollars through FEMA and US Army Corps of Engineers.
- Influx of home buyout requests.
 - As of Jan. 30, WLRD had received 21 home buyout requests and anticipate more to come.

Good News

Recent Projects Performed Well

Jan Road Levee Setback



Lower Russell Levee Setback



Countyline to A Street Levee Setback



Questions?



KING COUNTY
FLOOD CONTROL
DISTRICT



KING COUNTY FLOOD CONTROL DISTRICT

King County Courthouse
516 Third Avenue
Room 1200
Seattle, WA 98104

Signature Report

FCD Resolution

Proposed No. FCD2026-03.2

Sponsors

1 A RESOLUTION relating to the operation and finances of
2 the King County Flood Control Zone District; adopting a
3 revised 2026 budget, capital budget, six-year capital
4 improvement program for 2026-2031; and amending
5 Resolution FCD2025-12.

6 WHEREAS, the King County Flood Control Zone District ("the District")
7 adopted its 2026 work program, budget, operating budget, capital budget, and six-year
8 capital improvement program in Resolution FCD2025-12, and

9 WHEREAS, pursuant to Executive Committee Motion FCDECM2021-03,
10 directing the District to continue working collaboratively with King County to complete
11 thirty percent (30%) design of the Willowmoor Floodplain Restoration Project, the
12 District created as a pilot the Lake Sammamish Dock and Shoreline Grants Program, to
13 provide grant funding for projects with flood risk reduction benefits along the shoreline
14 of Lake Sammamish, including, but not limited to, relocating outbuildings outside of the
15 flood hazard areas, implement green shoreline erosion control or shoreline plantings, and
16 replacing fixed docks with floating docks, as part of its 2022 work program and budget,
17 and

18 WHEREAS, a selection committee composed of the director of water and land
19 resources division of the King County department of natural resources and parks, the

District's executive director, and a former state representative and Enumclaw city councilmember reviewed the 2025 applications for grant funds and made a unanimous recommendation regarding them to the District, and

WHEREAS, based on the recommendation of the selection committee, the board of supervisors ("the Board") desires to approve the 2025 grant fund applications and projects, and

WHEREAS, on December 8, 2025, the first of two atmospheric rivers produced historic flooding across King County, setting all-time records for rivers in every river basin in King County including the White, Green, Snoqualmie and Cedar rivers. The volume and duration of flooding, which lasted three weeks, caused damage to flood risk reduction infrastructure, requiring urgent repairs and the immediate implementation of capital projects, and

WHEREAS, emergency repairs were implemented to flood risk reduction infrastructure during the December flood, which continued into the month of January, and

WHEREAS, additionally, the District has identified capital project flood repairs for 2026 that were not anticipated at the time of 2026 budget adoption, and

WHEREAS, the amount expended for emergency repairs in December 2025 proposed for payment in 2026 from unspent appropriations from the 2025 budget is \$2,958,457, and

WHEREAS, the amount required for capital project flood repairs in this supplemental request for the 2026 budget is \$7,266,543, and

42 WHEREAS, pursuant to RCW 86.15.140, the District held a public hearing on the
43 proposed supplemental budget on February 10, 2026, and

44 WHEREAS, the board of supervisors finds, declares, and confirms that a declared
45 emergency existed within the meaning of applicable law, which presented an immediate
46 threat to public health, safety, and property requiring prompt action, and

47 WHEREAS, pursuant to RCW 86.15.110, the Board has determined that the
48 emergency expenditures and associated flood control improvements adopted by this
49 resolution generally contribute to the objectives of the District's comprehensive plan of
50 development, and

51 WHEREAS, the Board desires to adopt amendments to the District's 2026 budget,
52 capital budget, and six-year capital improvement program as set forth herein;

53 NOW, THEREFORE, BE IT RESOLVED BY THE BOARD OF
54 SUPERVISORS OF THE KING COUNTY FLOOD CONTROL ZONE DISTRICT:

55 SECTION 1. The Board adopts a revised 2026 budget for the District, as set forth
56 in Attachment B to this resolution, titled "2026 Annual Budget 1/28/2026," and amends
57 Section 1 of FCD2025-12 accordingly.

58 SECTION 2. The Board adopts a revised 2026 capital budget for the District,
59 consisting of the projects and expenditures Attachment D to this resolution, titled "2026
60 Annual Capital Budget 1/28/2026," and amends Section 1 of FCD2025-12 accordingly.

61 SECTION 3. The Board adopts a revised six-year capital improvement program
62 for the District, as set forth in Attachment E to this resolution, titled "2026-2031 Six-Year
63 CIP 1/28/2026," and amends Section 1 of FCD2025-12 accordingly.

64 SECTION 4. The Board adopts a revised 2026-2031 capital budget project list, as
65 set forth in Attachment H to this resolution, titled "2026-2031 Six-Year CIP Project
66 Allocations 1/28/2026," and amends Section 1 of FCD2025-12 accordingly.

67 SECTION 5. The Board approves the 2025 King County Flood Control District –

- 68 Lake Sammamish Dock and Shoreline Grant Program Projects, described in Attachment I
69 to this resolution and authorizes all necessary amendments to FCD2025-12 accordingly.

KING COUNTY FLOOD CONTROL DISTRICT
KING COUNTY, WASHINGTON

Reagan Dunn, Chair

ATTEST:

Attachments: B. 2026 Annual Budget 1-28-2026, D. 2026 Annual Capital Budget 1-28-2026, E. 2026 - 2031 Six-Year CIP 1-28-2026, H. 2026 - 2031 Six-Year CIP Project Allocations 1-28-2026, I. Lake Sammamish Dock and Shoreline Grant Program - 2025 Grant Recommendations

King County Flood Control District

2026 Annual Budget

Attachment B

1/28/2026

Program	2026 Approved	January Supplemental	2026 Revised
Flood District Administration	2,488,637	0	2,488,637
Maintenance and Operation	17,535,208	0	17,535,208
Construction and Improvements	94,329,275	7,266,543	101,595,818
Bond Retirement and Interest	0	0	0
Total	114,353,120	7,266,543	121,619,663
Projected Capital Reserves - Cash Fund Balance ¹	32,375,146	26,295,068	23,519,433
Projected Capital Reserves - Budgetary Fund Balance ²	(235,121,485)	(256,660,444)	(291,353,833)

¹ The cash fund balance assumes an expenditure rate of 18% of the capital budget in 2026, informed by prior year actuals.

² The budgetary fund balance assumes 100% expenditure of all budgeted amounts and is used to understand budgetary commitment.

King County Flood Control District

2026 Annual Capital Budget

Attachment D

1/28/2026

Basin	Acquisition	Design	Construction	Contingency	Total
Snoqualmie River Basin	21,550,000	2,995,904	268,691	-	24,814,595
Cedar River Basin	11,000,000	8,207,406	722,834	-	19,930,240
Green River Basin	-	5,325,853	4,712,482	-	10,038,335
White River Basin	-	6,140,980	-	-	6,140,980
Effectiveness Monitoring	-	892,035	-	-	892,035
Countywide Miscellaneous	-	4,015,067	-	750,000	4,765,067
Opportunity Fund	-	8,651,037	-	-	8,651,037
Grant Fund	-	-	26,363,529	-	26,363,529
Total	32,550,000	36,228,282	32,067,536	750,000	101,595,818

King County Flood Control District

2026 - 2031 Six-Year CIP
Attachment E

1/28/2026

Name	2024 Actuals	2025 Approved	2025 Revised	2026 Revised	2027	2028	2029	2030	2031	2026 - 2031 Total
Snoqualmie River Basin	6,501,038	\$29,415,607	56,666,700	24,814,595	61,579,730	30,105,595	28,338,756	46,483,160	67,203,816	258,525,652
Cedar River Basin	4,595,585	\$17,266,606	52,233,753	19,930,240	32,169,058	10,740,149	16,793,493	14,690,000	95,000	94,417,940
Green River Basin	11,886,438	\$25,085,889	123,315,907	10,038,335	30,954,993	110,437,466	162,706,515	42,901,126	17,443,805	374,482,240
White River Basin	724,634	\$6,351,490	8,491,358	6,140,980	3,874,126	2,216,158	53,976	2,385	366,523	12,654,148
Effectiveness Monitoring	637,303	\$819,080	1,346,649	892,035	1,101,440	1,019,066	539,827	504,760	789,051	4,846,178
Countywide Miscellaneous	1,066,404	\$2,500,000	6,122,871	4,765,067	3,715,209	3,078,000	1,280,000	1,200,000	1,200,000	15,238,276
Subregional Opportunity Fund	10,358,907	\$6,030,423	21,217,694	8,651,037	8,733,017	8,813,501	8,894,114	8,975,085	9,055,211	53,121,965
Grants Programs	17,583,041	\$24,719,798	76,067,344	26,363,529	27,305,199	28,240,506	29,173,993	30,131,862	31,122,586	172,337,675
Total	53,353,349	112,188,893	345,462,276	101,595,818	169,432,772	194,650,441	247,780,674	144,888,378	127,275,992	985,624,074

King County Flood Control District

2026-2031 Six-Year CIP Project Allocations
Attachment H

1/28/2026

Capital Investment Strategy Project
Grant/External Revenue Awarded
Cost Share Contribution to Others
Proposed New Add in 2026 Jan Supplemental

No.	Updated Project Name	Technical Project Name	Basin	Service Provider	2024 Inception to Date Expenditure	2025 Inception to Date Budget	2025 Available Budget	2026 Requested	Jan Supplemental Request	2026 Revised	2027 Forecasted	2028 Forecasted	2029 Forecasted	2030 Forecasted	2031 Forecasted	6-Year CIP Total	CIS Year 7-10	CIS 10+ Year	Project Life Total	Comments
1	South Fork Skykomish River Repetitive Loss Mitigation	WLFL0 SF SKYKMSH REP LOSS MIT	SF Skykomish	King County	\$5,780,601	\$7,280,601	\$1,500,000	\$3,600,000		\$3,600,000	\$3,800,000	\$3,800,000	\$4,100,000	\$4,200,000	\$4,400,000	\$23,900,000			\$31,180,601	Near Baring in unincorporated King County. This project will elevate or buyout individual structures in the South Fork Skykomish Basin to eliminate the risk of flooding or erosion damage during future flood events. Assumes one home per year.
2	Timber Lane Village Erosion Buyouts	WLFL0 TIMBER LN EROSN BUYOUTS	SF Skykomish	King County	\$1,972,649	\$3,472,649	\$1,500,000	\$2,000,000		\$2,000,000	\$2,200,000	\$2,300,000	\$2,400,000	\$2,400,000	\$2,600,000	\$13,900,000			\$17,372,649	Near Skykomish in unincorporated King County. This project will continue to acquire and remove homes along a stretch of the Skykomish River that are endangered by erosive forces as well as inundation in some places.Assumes one home per year.
3	Bendigo Levee Upper North Bend	WLFL1 BENDIGO UPR NORTH BEND	Upper Snoq	North Bend	\$2,739	\$50,000	\$47,261	\$0		\$0	\$0	\$0	\$0	\$0	\$4,200,000	\$4,200,000			\$4,250,000	North Bend. Cost-share of \$8.4M levee setback project. The levee overtops at a 20-year or greater flood, inundating undeveloped property, railway lines and roadways. Project would reconnect 25 acres of floodplain and construct a new levee that meets current engineering guidelines. City has submitted grant application for the remaining \$4.2 million.
4	Circle River Ranch Flood Risk Reduction	WLFL1 CIRCLE R RANCH RISK RED	Upper Snoq	King County	\$1,891,851	\$2,124,400	\$232,549	\$0		\$0	\$0	\$0	\$0	\$0	\$0	\$0			\$2,124,400	Near Near North Bend in unincorporated King County in unincorporated King County. This project will determine a preferred action to reduce long term risks from channel migration in the Circle River Ranch Neighborhood on the South Fork Snoqualmie River. Being conducted concurrent with South Fork Snoqualmie Corridor Plan.
5	Town of Skykomish Left Bank Levee 2025 Emergency Repair	WLFL0 SKYKOMISH TOWN LB REPAIR	Upper Snoq	King County			\$0	\$0	\$75,000	\$75,000	\$0	\$0	\$0	\$0	\$0	\$75,000			\$75,000	Emergency repair of damage to the Skykomish Town LB Levee caused by the December 2025 flood. Work will investigate and repair sinkholes identified between RM 15.5 and RM 16 within the Town of Skykomish.
5	City of Snoqualmie Riverwalk Acquisitions	WLFL1 CITY SNOQUALMIE ACQ	Upper Snoq	Snoqualmie		\$3,000,000	\$3,000,000	(\$500,000)		(\$500,000)	\$500,000	\$0	\$0	\$0	\$0	\$0			\$3,000,000	City of Snoqualmie. Acquire several flood-prone homes in the areas around Walnut St and Northern St.
6	City of Snoqualmie Home Elevations	WLFL1 CITY SNOQ HOME ELEV	Upper Snoq	Snoqualmie		\$500,000	\$500,000	\$0		\$0	\$0	\$0	\$0	\$0	\$0	\$0			\$500,000	City of Snoqualmie. Elevate several flood-prone homes in the areas around Walnut St and Northern St.
7	Mason Thorson Ells Levee 2022 Repair	WLFL1 MSN THRSN EL 2022 REPAIR	Upper Snoq	King County	\$166,809	\$205,000	\$38,191	\$0		\$0	\$0	\$0	\$0	\$0	\$0	\$0			\$205,000	Near Near North Bend in unincorporated King County in unincorporated King County. New project. Provide 20% local match to repair erosion to the downstream end of the Mason Thorson Ells levee under the US Army Corps of Engineers (USACE) PL 84-99 Levee Rehabilitation and Inspection Program (RIP). The downstream 60-feet of the levee was damaged during the February 2020 flood event and the proposed project will repair the damage and reduce future erosion risk to the facility.
8	Middle Fork Snoqualmie River Flood Conveyance	WLFL1 MF FLOOD CONVEYANCE	Upper Snoq	North Bend		\$1,800,000	\$1,800,000	\$0		\$0	\$0	\$0	\$0	\$0	\$0	\$0			\$1,800,000	North Bend. Overflow channels originating from the Middle Fork Snoqualmie River flow through neighborhoods and cross roads creating risk to homes and infrastructure. Potential solutions include channel modifications, enhancements, and culvert improvements.
9	Middle Fork Snoqualmie River Residential Flood Mitigation	WLFL1 MF RESIDENTIAL FLD MTGTN	Upper Snoq	King County	\$20,030	\$2,020,030	\$2,000,000	\$2,100,000		\$2,100,000	\$2,200,000	\$2,300,000	\$2,400,000	\$2,400,000	\$2,600,000	\$14,000,000			\$16,020,030	Near Near North Bend in unincorporated King County in unincorporated King County. Work with willing sellers to acquire eighteen homes at risk from channel migration along the Middle Fork (Project C in the Capital Investment Strategy)
10	North Fork Snoqualmie River Confluence Revetment Removal	WLFL1 NF CONFL RVTMNT REMOVAL	Upper Snoq	King County	\$178,262	\$874,518	\$696,256	\$0		\$0	\$0	\$0	\$0	\$0	\$0	\$0			\$874,518	Near Near North Bend in unincorporated King County in unincorporated King County. This project will acquire flood-prone properties in the North Fork Snoqualmie basin to reduce the risk of flood, erosion, and channel migration damage and secure footprints for future capital projects.
11	North Fork Snoqualmie River Residential Flood Mitigation	WLFL1 NF SNO RES FLD MIT	Upper Snoq	King County	\$53	\$2,000,053	\$2,000,000	\$2,100,000		\$2,100,000	\$2,200,000	\$2,300,000	\$2,400,000	\$2,400,000	\$2,600,000	\$14,000,000			\$16,000,053	Near Near North Bend in unincorporated King County in unincorporated King County. This project will acquire flood-prone properties in the North Fork Snoqualmie basin to reduce the risk of flood, erosion, and channel migration damage and secure footprints for future capital projects.
12	Norman Creek Up Stream 2024 Culvert Replacement	WLFL1 NORMAN CR US 2024 CULVRT	Upper Snoq	King County	\$23,556	\$1,100,000	\$1,076,444	\$0		\$0	\$0	\$0	\$0	\$0	\$0	\$0			\$1,100,000	Near North Bend in unincorporated King County. Improve SE 92nd Street, east of 428th Street, and alleviate roadway flooding by installing a new box culvert.
13	Pump Station Revetment Repair	WLFL1 PUMP STN RVTMNT REPAIR	Upper Snoq	King County	\$337,030	\$612,290	\$275,260	\$492,857		\$492,857	\$1,853,114	\$177,503	\$0	\$0	\$0	\$2,523,474			\$3,135,764	Snoqualmie. The Pump Station Revetment reduces erosion risk to a City of Snoqualmie sewage pump station. Erosion to the embankment at the upstream end of the Pump Station Revetement threatens the upstream end of the facility. The project would consider and implement improvements to the facility to reduce future erosion risk.
14	Reif Road Levee Improvements	WLFL1 REIF RD LEVEE IMPRVMENTS	Upper Snoq	King County	\$354	\$200,354	\$200,000	(\$200,000)		(\$200,000)	\$0	\$200,000	\$700,000	\$700,000	\$0	\$1,400,000			\$1,600,354	Near Near North Bend in unincorporated King County in unincorporated King County. Conduct a feasibility study to determine ways of preventing the overtopping of the Reif Rd Levee. Potential solutions include: repair and/or raise levee in place / setback levee / gravel removal / home elevations.
15	Reinig Rd 2016 Repair	WLFL1 REINIG RD 2016 REPAIR	Upper Snoq	King County	\$6,927,133	\$6,927,452	\$319	(\$319)		(\$319)	\$0	\$0	\$0	\$0	\$0	(\$319)			\$6,927,133	Near Near North Bend in unincorporated King County in unincorporated King County. Repair three primary damage sites just upstream and directly across from the South Fork Snoqualmie confluence totaling ~285 lineal feet. Completed in 2021.
16	Ribary Creek Flood Risk Reduction Project	WLFL1 RIBARY CREEK	Upper Snoq	North Bend	\$327,974	\$6,435,812	\$6,107,838	\$685,841		\$685,841	\$0	\$0	\$0	\$0	\$0	\$685,841			\$7,121,653	North Bend. Address flooding from Ribary Creek at Bendigo Blvd in North Bend as the Snoqualmie levees prevent drainage to the river during high flows.
17	South Fork Snoqualmie River Capital Investment Strategy Long Term Projects	WLFL1 SF CIS LONG TERM	Upper Snoq	King County				\$0		\$0	\$0	\$0	\$0	\$0	\$0	\$0		\$57,100,000	\$57,100,000	Near North Bend in unincorporated King County. Implement projects identified in the Capital Investment Strategy, approved as policy direction by the Executive Committee.
18	South Fork Snoqualmie River Capital Investment Strategy Medium Term Projects	WLFL1 SF CIS MED TERM	Upper Snoq	King County				\$0		\$0	\$0	\$0	\$0	\$0	\$0	\$0	\$47,200,000		\$47,200,000	Near North Bend in unincorporated King County. Implement projects identified in the Capital Investment Strategy, approved as policy direction by the Executive Committee.
19	Shake Mill Revetment Left Bank 2016 Repair	WLFL1 SHAKE MILL LB 2016 RPR	Upper Snoq	King County	\$2,951,884	\$2,981,884	\$30,000	\$0		\$0	\$0	\$0	\$0	\$0	\$0	\$0			\$2,981,884	Near Near North Bend in unincorporated King County in unincorporated King County. Complete. Total breach of levee - erosion and lateral channel migration is ongoing. No immediately adjacent private property or infrastructure. Continued erosion could threaten 428th Ave embankment or bridge.
20	Upper Snoqualmie River Capital Investment Strategy Reprioritization	WLFL1 SNOQ CIS REPRIORITIZATION	Upper Snoq	King County				\$150,000		\$150,000	\$150,000	\$50,000	\$0	\$0	\$0	\$350,000			\$350,000	This project will reevaluate and reprioritize the approved Snoqualmie Basin Capital Investment Strategy (CIS) documents (Middle Fork CIS, South Fork CIS) and identify new projects and programmatic actions that reduce flood risk, increase community flood resilience, and achieve multi-benefit outcomes.
21	Tate Creek Scour Repair	WLFL1 TATE CR SCOUR REPAIR	Upper Snoq	King County	\$0	\$500,000	\$500,000	\$0		\$0	\$0	\$0	\$0	\$0	\$0	\$0			\$500,000	This project will conduct a feasibility study for replacing or improving Tate

No.	Updated Project Name	Technical Project Name	Basin	Service Provider	2024 Inception to Date Expenditure	2025 Inception to Date Budget	2025 Available Budget	2026 Requested	Jan Supplemental Request	2026 Revised	2027 Forecasted	2028 Forecasted	2029 Forecasted	2030 Forecasted	2031 Forecasted	6-Year CIP Total	CIS Year 7-10	CIS 10+ Year	Project Life Total	Comments
22	Upper Snoqualmie River Residential Flood Mitigation	WLFL1 UPR SNO RES FLD MITIGTN	Upper Snoq	King County	\$14,918,782	\$19,918,782	\$5,000,000	\$5,200,000		\$5,200,000	\$5,400,000	\$5,600,000	\$5,800,000	\$6,000,000	\$6,200,000	\$34,200,000			\$54,118,782	In and around Snoqualmie. This project will continue to acquire or elevate flood-prone structures in the Upper Snoqualmie basin to reduce the risk of flood, erosion, and channel migration damage. Partnership with City of Snoqualmie to elevate homes and cost-share acquisition of homes where City is planning to construct the Riverwalk project.
23	264th Avenue NE at SR202 Flood Reduction	WLFL2 264TH AVE NE @ SR202 FLD	Lower Snoq	King County		\$540,000	\$540,000	\$0		\$0	\$27,500	\$0	\$0	\$0	\$0	\$27,500			\$567,500	Near Redmond. Alleviate flooding on this sole access road by replacing the existing culverts and raising the roadway to eliminate over-topping during flood events.
24	334th Avenue SE at SE 43rd Street Flood Reduction	WLFL2 334TH AVE SE & SE 43RD	Lower Snoq	King County		\$500,000	\$500,000	\$0		\$0	\$0	\$0	\$0	\$0	\$0	\$0			\$500,000	Near Fall City in unincorporated King County. Improve drainage to alleviate neighborhood flooding by constructing a drainage system to flow to the Snoqualmie River.
25	Dutchman Road Revetment Repair	WLFL2 DUTCHMAN RD REPAIR	Lower Snoq	King County	\$1,648,242	\$2,649,549	\$1,001,307	\$0		\$0	\$7,147,868	\$25,800	\$0	\$0	\$0	\$7,173,668			\$9,823,217	Near Near Duvall in unincorporated King County in unincorporated King County. Repair approximately 200 feet of revetment. Dutchman Road in this location provides the sole access to residences and business on the west side of the Snoqualmie Valley downstream of Near Duvall in unincorporated King County. Continued erosion of the revetment could result in erosion of the road (West Snoqualmie Valley Road NE) which would severely limit access to the downstream property owners during or following a flood event.
26	Farm Flood Task Force Implementation	WLFL2 FARM FLOOD TSK FORCE IMP	Lower Snoq	King County	\$853,997	\$863,997	\$10,000	\$0		\$0	\$5,000	\$5,000	\$5,000	\$5,000	\$5,000	\$25,000			\$888,997	Near Carnation in unincorporated King County. This project provides technical and cost-sharing assistance to agricultural landowners in the Lower Snoqualmie floodplain to help them better withstand the impacts of flooding. Specific project actions include farm pads and elevation or flood proofing of agricultural structures.
27	Fish Hatchery Road Bridge #61B	WLFL2 FISH HATCHERY RD BR #61B	Lower Snoq	King County	\$205,181	\$700,000	\$494,819	\$0		\$0	\$0	\$0	\$0	\$0	\$0	\$0			\$700,000	Near Duvall in unincorporated King County. Strengthen the bridge structure to stabilize it after the most recent flood event, rebuild the east approach roadway to address the current issue and to protect it against major flood events in the future, and restore the eroded creek bed and riverbank profile to buffer the bridge against scour.
28	Lower Snoqualmie River 2019 Bank Repair	WLFL2 L SNO 2019 BANK REPAIR	Lower Snoq	King County	\$1,078,929	\$2,200,000	\$1,121,071	\$0		\$0	\$0	\$0	\$0	\$0	\$0	\$0			\$2,200,000	Near Fall City in unincorporated King County. The river is scouring the road away and David Powell Road is collapsing into the river. This project repaired an existing failing revetment and extend MSE wall to prevent undercutting of the riverbank and roadway. Completed in September 2020.
29	Lower Snoqualmie River Residential Flood Mitigation	WLFL2 LWR SNO RESDL FLD MITGTN	Lower Snoq	King County	\$3,453,573	\$6,453,573	\$3,000,000	\$3,150,000		\$3,150,000	\$3,307,500	\$3,472,875	\$3,646,519	\$3,828,845	\$4,020,287	\$21,426,026			\$27,879,599	Near Carnation in unincorporated King County: This project will acquire or elevate flood-prone structures in the lower Snoqualmie basin to reduce the risk of flood or channel migration damage during future flood events.
30	Snoqualmie Valley Feasibility Study	WLFL2 SNOQUALMIE VALLEY FEAS	Lower Snoq	King County	\$385,289	\$1,300,000	\$914,711	\$0		\$0	\$0	\$0	\$0	\$0	\$0	\$0			\$1,300,000	Near Duvall in unincorporated King County. Regional flooding in the Snoqualmie Valley cuts off access to eastern cities. Determine which major roadway(s) that cross the Snoqualmie Valley would be the most cost effective to improve in the valley with chronic flood issues impacting over 25,000 daily drivers.
31	Stossel Revetment Major Repair	WLFL2 STOSSEL MAJOR REPAIR	Lower Snoq	King County	\$1,112,372	\$3,673,510	\$2,561,138	\$43,878		\$43,878	\$0	\$0	\$0	\$0	\$0	\$43,878			\$3,717,388	Near Carnation in unincorporated King County. Placeholder costs for long-term facility improvement project to prevent erosion undermining 310th Ave NE.
32	Stossel Bridge Right Bank Revetment 2018 Repair	WLFL2 STOSSEL RB 2018 REPAIR	Lower Snoq	King County	\$1,042,233	\$1,042,974	\$741	\$0		\$0	\$0	\$0	\$0	\$0	\$0	\$0			\$1,042,974	Near Carnation in unincorporated King County. This completed project repaired approximately 250 feet of damage identified in late March 2018 to a section of the Stossel Bridge Right Bank Revetment on the Snoqualmie River, downstream of the City of Near Carnation in unincorporated King County.
33	Tolt Pipeline Protection	WLFL2 TOLT PIPELINE PROTECTION	Lower Snoq	King County	\$10,745,450	\$10,765,450	\$20,000	\$0		\$0	\$0	\$0	\$0	\$0	\$0	\$0			\$10,765,450	This project rebuilt approximately 1,200 feet of failed riprap river bank protection at the Winkelman facility on the Snoqualmie River in order to provide necessary protection of Seattle Public Utilities' Tolt River water supply pipelines and adjacent farmlands from bank erosion and channel migration.
34	Girl Scout Camp Levee Setback	WLFL3 GIRL SCOUT LEVEE SETBACK	Tolt	King County	\$43,251	\$477,619	\$434,368	\$0		\$0	\$1,437,715	\$1,034,929	\$1,491,354	\$968,208	\$20,495,963	\$25,428,169			\$25,905,788	This project will set back the Girl Scout Camp Levee to reduce flood risks to the Girl Scout Camp and Remlinger Farms, improve levee integrity, increase the lateral migration area and area for ongoing sediment deposition, reduce long-term levee maintenance costs, and improve instream, floodplain and riparian habitat functions. This project is tied to and contingent on the FCD's decisions on the Tolt Level of Service study.
35	Holberg Levee 2019 Repair	WLFL3 HOLBERG 2019 REPAIR	Tolt	King County		\$25,000	\$25,000	\$82,850		\$82,850	\$83,166	\$632,632	\$0	\$0	\$0	\$798,648			\$823,648	Near Carnation in unincorporated King County. Facility failure has consequences for property owners immediately landward of facility. Potential for high flows and erosive damage to residences and property.
36	Holberg Levee Feasibility Study	WLFL3 HOLBERG FEASIBILITY	Tolt	King County	\$369,027	\$394,845	\$25,818	\$0		\$0	\$0	\$0	\$0	\$0	\$0	\$0			\$394,845	Near Carnation in unincorporated King County. Feasibility study to determine the nature and extent of levee improvements necessary to remove four homes in unincorporated King County from the regulatory Channel Migration Zone as mapped in the Tolt River Channel Migration study
37	Lower Frew Levee Setback	WLFL3 L FREW LEVEE SETBACK	Tolt	King County	\$2,816,446	\$6,921,610	\$4,105,164	\$1,926,150		\$1,926,150	\$26,256,830	\$2,293,428	\$0	\$0	\$0	\$30,476,408			\$37,398,018	Near Carnation in unincorporated King County. Capital Investment Strategy. Design, based on level of service analysis, the highest priority levee setback for flood risk reduction. Phase 2 construction estimated in CIS at \$14.5M-\$16.7M
38	Lower Tolt River Acquisitions	WLFL3 LOWER TOLT R ACQUISITION	Tolt	King County	\$698,102	\$2,098,102	\$1,400,000	\$1,100,000		\$1,100,000	\$100,000	\$110,000	\$200,000	\$0	\$0	\$1,510,000			\$3,608,102	Near Carnation in unincorporated King County. Acquire high-priority flood risk reduction properties in the lower two miles of the Tolt River consistent with the adopted Capital Investment Strategy.
39	Remlinger Levee Improvements	WLFL3 REMLINGER LEVEE IMPRVMNT	Tolt	King County		\$236,654	\$236,654	\$0		\$0	\$185,657	\$109,273	\$73,158	\$1,153,088	\$0	\$1,521,176			\$1,757,830	Near Carnation in unincorporated King County Repair approximately 250 feet of the Remlinger Levee. Scope of project may be modified once Tolt River Level of Service project is completed; schedule is contingent on FCD direction on the Tolt level of service project.
40	Rio Vista Acquisitions	WLFL3 RIO VISTA ACQUSITIONS	Tolt	King County	\$2,634,595	\$4,934,595	\$2,300,000	\$2,300,000		\$2,300,000	\$2,300,000	\$2,400,000	\$2,400,000	\$2,400,000	\$2,500,000	\$14,300,000			\$19,234,595	Near Carnation in unincorporated King County. Capital Investment Strategy: Acquire at-risk homes from willing sellers.
41	San Souci Neighborhood Buyout	WLFL3 SAN SOUCI NBRHOOD BUYOUT	Tolt	King County	\$5,046,463	\$5,760,463	\$714,000	\$0		\$0	\$0	\$0	\$0	\$0	\$0	\$0			\$5,760,463	Near Carnation in unincorporated King County. Capital Investment Strategy: acquire at-risk homes from willings sellers.
42	Tolt River Capital Investment Strategy Long Term Projects	WLFL3 TOLT CIS LONG TERM	Tolt	King County				\$0		\$0	\$0	\$0	\$0	\$0	\$0	\$0		\$28,800,000	\$28,800,000	Near Carnation in unincorporated King County Implement projects identified in the Capital Investment Strategy, approved as policy direction by the Executive Committee.
43	Tolt River Capital Investment Strategy Medium Term Projects	WLFL3 TOLT CIS MED TERM	Tolt	King County				\$0		\$0	\$0	\$0	\$0	\$0	\$0	\$0	\$56,250,000		\$56,250,000	Near Carnation in unincorporated King County Implement projects identified in the Capital Investment Strategy, approved as policy direction by the Executive Committee.
44	Tolt River Capital Investment Strategy Reprioritization	WLFL3 TOLT CIS REPRIORITIZATION	Tolt	King County			\$0	\$100,000		\$100,000	\$100,000	\$0	\$0	\$0	\$0	\$200,000			\$200,000	This project will reevaluate and reprioritize the approved Tolt Basin Capital Investment Strategy (CIS) document and identify new projects and programmatic actions that reduce flood risk, increase community flood resilience, and achieve multi-benefit outcomes.
45	Tolt River Levee Level of Service Analysis	WLFL3 TOLT LEVEE LOS ANALYSIS	Tolt	King County	\$1,010,490	\$1,132,951	\$122,461	\$0		\$0	\$0	\$0	\$0	\$0	\$0	\$0			\$1,132,951	Near Carnation in unincorporated King County. Capital Investment Strategy: Conduct a detailed hydraulic analysis to optimize the elevation of new levees to maximize flood risk reduction benefits

No.	Updated Project Name	Technical Project Name	Basin	Service Provider	2024 Inception to Date Expenditure	2025 Inception to Date Budget	2025 Available Budget	2026 Requested	Jan Supplemental Request	2026 Revised	2027 Forecasted	2028 Forecasted	2029 Forecasted	2030 Forecasted	2031 Forecasted	6-Year CIP Total	CIS Year 7-10	CIS 10+ Year	Project Life Total	Comments
46	Tolt River Natural Area Acquisitions	WLFL3 TOLT R NATURAL AREA ACQ	Tolt	King County	\$5,048,102	\$6,578,102	\$1,530,000	\$0		\$0	\$0	\$0	\$0	\$0	\$0	\$0			\$6,578,102	Near Carnation in unincorporated King County. Capital investment strategy: acquire at-risk homes from willing sellers.
47	Tolt River Road NE Improvements	WLFL3 TOLT R RD NE IMPRVMTS	Tolt	King County		\$0	\$0	\$0		\$0	\$91,301	\$250,000	\$150,000	\$2,342,329	\$30,000	\$2,863,630			\$2,863,630	Near Carnation in unincorporated King County Capital Investment Strategy: Initiate design for elevation of one road location to reduce or eliminate isolation. Implement additional road elevations as funds become available.
48	Upper Frew Levee Setback	WLFL3 UPPER FREW LEVEE SETBACK	Tolt	King County	\$23,171	\$210,175	\$187,004	\$408,338		\$408,338	\$2,234,079	\$3,044,155	\$2,572,725	\$17,685,690	\$17,552,566	\$43,497,553			\$43,707,728	Near Carnation in unincorporated King County. Capital Investment Strategy: Initiate the levee setback design. Levee setback to increase sediment storage and floodwater conveyance; protect adjacent development; reduce damage to trail bridge.
49	Alpine Manor Mobile Home Park Acquisitions	WLFL4 ALPINE MANOR MOB PRK ACQ	Raging	King County	\$1,753,880	\$2,633,880	\$880,000	\$0		\$0	\$0	\$0	\$0	\$0	\$0	\$0			\$2,633,880	Near Preston in unincorporated King County. Acquisition of at-risk homes in the Alpine Manor neighborhood.
50	Snoqualmie-South Fork Skykomish Subtotal	Snoqualmie-South Fork Skykomish Subtotal			\$75,468,497	\$124,096,874	\$48,628,374	\$24,739,595	\$75,000	\$24,814,595	\$61,579,730	\$30,105,595	\$28,338,756	\$46,483,160	\$67,203,816	\$258,525,652	\$103,450,000	\$85,900,000	\$571,972,526	
51																				
52																				
53	Allen Lake Outlet Improvements	WLFL5 ALLEN LK OUTLET IMPRVMT	Sammamish	King County	\$127,466	\$2,781,256	\$2,653,790	\$10,000		\$10,000	\$0	\$0	\$0	\$0	\$0	\$10,000			\$2,791,256	Sammamish. To address chronic flooding on this sole access roadway with approximately 200 properties, look at upstream and downstream retention/detention options; study road-raining options; prepare Concept Development Report, analyze and select best options.
54	George Davis Creek Passage	WLFL5 GEORGE DAVIS CRK PASSAGE	Sammamish	Sammamish		\$400,000	\$400,000	\$0		\$0	\$0	\$0	\$0	\$0	\$0	\$0			\$400,000	Sammamish. This project will restore access to one river mile of high quality kokanee salmon habitat and reduce the risk of flooding by reducing sediment deposition.
55	Irwin Right Revetment 2020 Repair	WLFL5 IRWIN RIGHT REPAIR 2020	Sammamish	King County	\$814,110	\$836,037	\$21,927	\$0		\$0	\$0	\$0	\$0	\$0	\$0	\$0			\$836,037	Near Issaquah in unincorporated King County. Further damage to the facility could cut off the sole access to one resident (via a private road and bridge over the creek).
56	Issaquah Creek Capital Investment Strategy	WLFL5 ISSAQUAH CREEK CIS	Sammamish	King County	\$109,767	\$982,168	\$872,401	\$177,599		\$177,599	\$150,000	\$0	\$0	\$0	\$0	\$327,599			\$1,309,767	Near Issaquah in unincorporated King County: Identify and prioritize near-, mid-, and long-term capital projects for Flood Control District funding along Near Issaquah in unincorporated King County Creek.
57	Jerome Revetment 2020 Repair	WLFL5 JEROME 2020 REPAIR	Sammamish	Issaquah	\$170,271	\$355,083	\$184,812	\$22,834		\$22,834	\$464,000	\$2,000	\$0	\$0	\$0	\$488,834			\$843,917	Issaquah. The Jerome Revetment protects three private residences in the City of Issaquah. Erosion of the revetment could result in loss of property and damage to private utilities. Loss of bank in front of middle property. 70 linear feet (LF) of erosion.
58	Momb Revetment 2020 Repair	WLFL5 MOMB 2020 REPAIR	Sammamish	King County	\$450,570	\$781,570	\$331,000	\$23,889		\$23,889	\$0	\$0	\$0	\$0	\$0	\$23,889			\$805,459	Near Issaquah in unincorporated King County. Damage to the SE 156th St. road next flood season could cut off the sole access to a community of about 30 homes. More erosion at the downstream end of the facility may further destabilize the steep slope of the landslide and threaten downstream homeowners.
59	Sammamish River Capital Investment Strategy	WLFL5 SAMMAMISH CIS	Sammamish	King County	\$2,126,796	\$3,190,507	\$1,063,711	\$86,289		\$86,289	\$0	\$0	\$0	\$0	\$0	\$86,289			\$3,276,796	Redmond, Woodinville, Bothell, and Kenmore: Identify and prioritize near-, mid-, and long-term capital projects for Flood Control District funding along the Sammamish River.
60	Sammamish River at River Mile 7.2 Left Bank Repair	WLFL5 SAMMAMISH RM 7.2 LB REPAIR	Sammamish	King County		\$0	\$0	\$500,000		\$500,000	\$0	\$0	\$0	\$0	\$0	\$500,000			\$500,000	Woodinville. The project will construct a permanent repair to damage along the left bank of the Sammamish River constructed channel at river mile 7.2.
61	Willowmoor Floodplain Restoration	WLFL5 WILLOWMOOR FLDPLAIN REST	Sammamish	King County	\$4,059,649	\$5,145,066	\$1,085,417	\$559,894		\$559,894	\$0	\$0	\$0	\$0	\$0	\$559,894			\$5,704,960	Redmond. Willowmoor Floodplain Restoration Project seeks to reduce the frequency and duration of high lake levels in Lake Sammamish while maintaining downstream Sammamish River flood control performance and enhancing habitat. Design only, does not include implementation costs. The project will reconfigure the Sammamish transition zone to ensure ongoing flow conveyance, downstream flood control, potential extreme lake level reduction, habitat conditions improvement, and reduction of maintenance impacts and costs. Project is currently on hold pending completion of a 3rd party review.
62	148th Ave SE Larsen Lake Flood Reduction Bellevue	WLFL6 148TH LARSEN LK BELLEVUE	Lk Wash Tribs	Bellevue	\$474,600	\$538,500	\$63,900	\$0		\$0	\$0	\$0	\$0	\$0	\$0	\$0			\$538,500	Bellevue. Conduct a site assessment and initiate preliminary design to progress toward construction of best drainage treatments and resilient design to reduce or eliminate roadway flooding on 148th Ave SE. Improve high water flow capacity for Larsen Lake/Lake Hills Greenbelt to Kelsey Creek where it floods 148th Avenue SE during moderate to severe storm and longer duration rainfall periods.
63	Bear Creek Flood Erosion	WLFL6 BEAR CRK FLOOD EROSION	Lk Wash Tribs	Redmond	\$128	\$1,550,093	\$1,549,965	\$0		\$0	\$0	\$0	\$0	\$0	\$0	\$0			\$1,550,093	Redmond. Protect Avondale Rd from an embankment that has been scoured by floodwaters from Bear Creek.
64	Factoria Boulevard Drainage Improvements	WLFL6 FACTORIA BLVD DRAINAGE	Lk Wash Tribs	Bellevue		\$9,914,000	\$9,914,000	\$0		\$0	\$0	\$0	\$0	\$0	\$0	\$0			\$9,914,000	Bellevue. Reduce flooding during high-intensity storm events along Factoria Boulevard, a major transportation corridor within the City of Bellevue. These events have increased in frequency and are anticipated to be even more frequent in the future as a result of climate change.
65	Issaquah Creek Tributary Feasibility Study	WLFL6 ISSAQUAH TRIB FEAS	Lk Wash Tribs	King County	\$323,371	\$350,000	\$26,629	\$0		\$0	\$0	\$0	\$0	\$0	\$0	\$0			\$350,000	Near Issaquah in unincorporated King County. Prepare a feasibility analysis report which will include, but is not limited to, surveying, geotechnical analysis, traffic analysis, and hydraulic analysis to identify potential solutions to bridge deficiencies, including a constructed hydraulic opening with piles that collect debris and pose risks to the stability of the bridge.
66	May Valley 186th Ave SE Culvert Replacement	WLFL6 MAY VALLEY 186TH CULVERT	Lk Wash Tribs	King County		\$500,000	\$500,000	\$0		\$0	\$0	\$0	\$0	\$0	\$0	\$0			\$500,000	Near Renton in unincorporated King County. Reduce surface water flooding by replacing the culvert on East-West ditch under 186th Avenue SE.
67	May Valley Drainage	WLFL6 MAY VALLEY DRAINAGE	Lk Wash Tribs	King County	\$442,513	\$530,000	\$87,487	\$0		\$0	\$0	\$0	\$0	\$0	\$0	\$0			\$530,000	Newcastle. As recommended in the May Creek Basin Plan, two sediment traps will be constructed on May Creek tributaries (Cabbage and Country Creeks) to limit sediment loading. FCD funding is for initial feasibility analysis, landowner outreach, and acquisition of property from willing sellers for a future sediment facility.
68	Belmondo Levee 2020 Repair	WLFL7 BELMONDO 2020 REPAIR	Cedar	King County	\$611,398	\$2,001,398	\$1,390,000	\$0		\$0	\$0	\$0	\$0	\$0	\$0	\$0			\$2,001,398	Near Renton in unincorporated King County. Critical facilities (Utilities, CRT, SR 169). Regional impact extns. Potential human injury from sudden change in conditions. Generally exposed bank - damage likely to occur next major high-flow event.
69	Brassfield Revetment 2020 Repair	WLFL7 BRASSFIELD 2020 REPAIR	Cedar1	King County			\$0	\$50,000		\$50,000	\$275,971	\$325,971	\$2,613,144	\$47,500	\$0	\$3,312,586			\$3,312,586	This project will repair damage to a section of revetment near RM 7.2 caused by toe scour, loss of rock, and trees that have fallen into the river. This project is on the bank opposite the 2022 Riverbend project, adjacent to several residential properties. FEMA reimbursement has been secured for this project.
70	Byers Curve Levee Neighborhood Improvements	WLFL7 BYERS NBHOOD IMPROVMENTS	Cedar	King County	\$7,954	\$220,000	\$212,046	\$0		\$0	\$0	\$0	\$0	\$0	\$0	\$0			\$220,000	Near Renton in unincorporated King County. Capital Investment Strategy: Take several actions to reduce flood risk including construction of an emergency egress route, acquisition of flood-prone homes, and possible elevation of neighborhood roads. The Cedar CIS will be reviewed by the District in light of changed conditions from the 2020 flood disaster.
71	Cedar River Pre-Construction Strategic Acquisitions	WLFL7 CDR PRE-CONST STRTGC ACQ	Cedar	King County	\$5,289,632	\$10,330,532	\$5,040,900	\$7,000,000		\$7,000,000	\$2,000,000	\$2,000,000	\$2,000,000	\$2,000,000	\$2,000,000	\$15,000,000			\$25,330,532	Near Renton in unincorporated King County. This project will acquire strategic real estate upon which several large Flood Control District capital projects are dependent (Project J in the Capital Investment Strategy). Assumes 3 homes per year.

No.	Updated Project Name	Technical Project Name	Basin	Service Provider	2024 Inception to Date Expenditure	2025 Inception to Date Budget	2025 Available Budget	2026 Requested	Jan Supplemental Request	2026 Revised	2027 Forecasted	2028 Forecasted	2029 Forecasted	2030 Forecasted	2031 Forecasted	6-Year CIP Total	CIS Year 7-10	CIS 10+ Year	Project Life Total	Comments
72	Cedar River Capital Investment Strategy Long Term Projects	WLFL7 CEDAR CIS LONG TERM	Cedar	King County						\$0	\$0	\$0	\$0	\$0	\$0	\$0		\$35,400,000	\$35,400,000	Near Renton in unincorporated King CountyImplement projects identified in the Capital Investment Strategy, approved as policy direction by the Executive Committee.
73	Cedar River Capital Investment Strategy Medium Term Project	WLFL7 CEDAR CIS MED TERM	Cedar	King County						\$0	\$0	\$0	\$0	\$0	\$0	\$0	\$22,000,000		\$22,000,000	Near Renton in unincorporated King CountyImplement projects identified in the Capital Investment Strategy, approved as policy direction by the Executive Committee.
74	Cedar River Capital Investment Strategy Reprioritization	WLFL7 CEDAR CIS REPRIORITIZATION	Cedar	King County				\$125,000		\$125,000	\$0	\$0	\$0	\$0	\$0	\$125,000			\$125,000	This project will reevaluate and reprioritize the approved Cedar River Capital Investment Strategy (CIS) and identify new projects and programmatic actions that reduce flood risk, increase community flood resilience, and achieve multi-benefit outcomes.
75	Cedar River Downstream Improvements	WLFL7 CEDAR R DWNSTREAM IMPV	Cedar	King County		\$150,000	\$150,000	\$0		\$0	\$0	\$0	\$0	\$0	\$0	\$0			\$150,000	This project will improve Cedar Grove Road near Byers Road SE and alleviate roadway flooding by raising the road through the application of a thick layer of overlay.
76	Cedar River Gravel Removal Phase II	WLFL7 CEDAR R GRAVEL PHASE II	Cedar	Renton		\$500,000	\$500,000	\$0		\$0	\$500,000	\$500,000	\$0	\$10,500,000	\$0	\$11,500,000			\$12,000,000	Renton. The project ensures the minimum required 100-year flood conveyance capacity along the lower 1.25 miles of the Cedar River. Project is a required maintenance action by the Army Corps of Engineers Section 205 Flood Control Project. Maintenance dredging took place in 2016. Project funding shown herein represent post construction mitigation monitoring and reporting as well as the planning and design of the next dredging project. Additional funding will be needed beyond 2026 to cover permitting, mitigation plan development, construction, mitigation and post-construction monitoring work associated with the next cycle of dredging.
77	Cedar River Residential Flood	WLFL7 CEDAR RES FLOOD MITIGTN	Cedar	King County	\$3,861,701	\$6,338,123	\$2,476,422	\$2,000,000	\$2,000,000	\$4,000,000	\$2,000,000	\$2,000,000	\$2,000,000	\$2,000,000	\$0	\$12,000,000			\$18,338,123	This project will acquire flood-prone properties or elevate individual
78	Cedar River Gravel Removal	WLFL7 CEDAR RVR GRAVEL REMOVAL	Cedar	Renton	\$11,049,006	\$12,835,100	\$1,786,094	\$0		\$0	\$0	\$0	\$0	\$0	\$0	\$0			\$12,835,100	Renton. The project ensures the minimum required 100-year flood conveyance capacity along the lower 1.25 miles of the Cedar River. Project is a required maintenance action by the Army Corps of Engineers Section 205 Flood Control Project. Maintenance dredging took place in 2016. Project funding shown herein represent post construction mitigation monitoring and reporting as well as the planning and design of the next dredging project. Additional funding will be needed beyond 2026 to cover permitting, mitigation plan development, construction, mitigation and post-construction monitoring work associated with the next cycle of dredging.
79	Cedar River Trail 5 Revetment 2020 Repair	WLFL7 CRT SITE 5 2020 REPAIR	Cedar	King County	\$702,743	\$1,202,743	\$500,000	\$2,041,000		\$2,041,000	\$0	\$0	\$0	\$0	\$0	\$2,041,000			\$3,243,743	Near Renton in unincorporated King County. Erosion and scour have resulted in loss of toe and bank rock, oversteepened and undercut banks (some portions cantilevered). Scour has undermined numerous large trees, likely to fall into the channel likely resulting in further damage of the bank. Damage is observed along approximately 350 feet of facility, near the upstream end.
80	Cedar River Trail Revetment 1 2025 Emergency Repair	WLFL7 CRT1 2025 EMERGENCY RPR		King County				\$0	\$300,000	\$300,000	\$0	\$0	\$0	\$0	\$0	\$300,000			\$300,000	Emergency repair of approximately 120 feet of damage to the CRT1 revetment caused by the December 2025 flood. Located between Renton and Maple Valley, the work will protect a regional fiber-optic trunk line, the Cedar River Trail, and SR 169 in unincorporated King County, WA.
81	Cedar River Trail Revetment 3 2025 Repair	WLFL7 CRT3 EMERGENCY REPAIR		King County		\$70,180	\$70,180	\$0	\$229,820	\$229,820	\$0	\$0	\$0	\$0	\$0	\$229,820			\$300,000	Emergency repair of approximately 230 feet of damage to the CRT3 revetment caused by the December 2025 flood. Located between Renton and Maple Valley, the work will protect a regional fiber-optic trunk line, the Cedar River Trail, and SR 169 in unincorporated King County, WA.
82	Dorre Don Revetment 2020 Repair	WLFL7 DORRE DON 2020 REPAIR	Cedar1	King County			\$0	\$50,000		\$50,000	\$39,595	\$89,595	\$895,947	\$47,500	\$0	\$1,122,637			\$1,122,637	This project will repair damage to a section of the Lower and Upper Dorre Don revetments near RM 16.55 caused by scour under the Cedar River Trail bridge. The facility provides erosion protection for the Cedar River Trail bridge, Lower Dorre Don Way SE, and a buried water line. FEMA reimbursement has been secured for this project.
83	Dorre Don Revetment Neighborhood Improvements	WLFL7 DORRE DON NBHOOD IMPV	Cedar	King County		\$800,000	\$800,000	\$0		\$0	\$0	\$0	\$0	\$0	\$0	\$0			\$800,000	Near Renton in unincorporated King County. Capital Investment Strategy: This project will acquire flood-prone homes per the Cedar CIS, as well as evaluate if changes to the levee and road elevation will result in meaningful flood risk reduction and to determine what level of protection can be provided. The study would also evaluate other structural improvements such as raising Lower Dorre Don Way SE upstream and downstream of the trail crossing and farther downstream near RM 16.3. The Cedar CIS will be reviewed by the District in light of changed conditions from the 2020 flood disaster.
84	Herzman to Camp Freeman	WLFL7 HERZMAN LEVEE SETBACK	Cedar	King County	\$4,585,908	\$5,813,534	\$1,227,626	\$1,406,251		\$1,406,251	\$8,380,423	\$5,168,594	\$4,560,332	\$0	\$0	\$19,515,600			\$25,329,134	Near Renton in unincorporated King County. Capital Investment Strategy: Setback levee; excavate side-channel to reduce pressure on revetment; reconstruct, reinforce and/or extend revetment; acquire up to 5 properties.
85	Jan Road Levee Setback	WLFL7 JAN RD LEVEE SETBACK	Cedar	King County	\$15,238,306	\$15,288,306	\$50,000	\$0		\$0	\$0	\$0	\$0	\$0	\$0	\$0			\$15,288,306	Near Renton in unincorporated King County. Capital Investment Strategy: Suite of solutions to be determined as part of feasibility study. Includes raise road, partial removal of Jan Road levee, construction of side channel, and mitigation of at-risk properties. Construction completed in 2022.
86	Lower Cedar River Feasibility Study	WLFL7 LOWER CEDAR FEAS STUDY	Cedar	Renton	\$196,702	\$685,239	\$488,537	\$290,000		\$290,000	\$0	\$0	\$0	\$0	\$0	\$290,000			\$975,239	Renton. Capital Investment Strategy: Conduct feasibility study of Lower Cedar reach in City of Renton to 1) quantify economic damage potential 2) determine infrastructure modifications to improve flood resiliency and sediment storage potential, and 30 conduct cost-benefit analysis.
87	Lower Jones Road Neighborhood Improvements	WLFL7 LOWER JONES IMPRVMNTS	Cedar	King County	\$682,906	\$2,654,203	\$1,971,297	\$0		\$0	\$0	\$0	\$0	\$0	\$0	\$0			\$2,654,203	Near Renton in unincorporated King County. Capital Investment Strategy: Raise in place or setback Jones Road; excavate and stabilize right bank to increase conveyance capacity; reinforce one revetment; remove portion of another revetment; acquire 8 at risk properties.
88	Madsen Creek Culvert 2017 Repair	WLFL7 MADSEN CR CULVERT 2017	Cedar	King County	\$3,238,413	\$3,326,000	\$87,587	\$0		\$0	\$0	\$0	\$0	\$0	\$0	\$0			\$3,326,000	Near Renton in unincorporated King County To address a culvert failure affecting approximately 10 properties, prepare Concept Development Report to analyze and select best culvert replacement and road-raising option; and analyze upstream and downstream retention/detention impacts.
89	Maplewood Revetment 2020 Repair	WLFL7 MAPLEWOOD 2020 REPAIR	Cedar1	King County			\$0	\$50,000		\$50,000	\$320,078	\$370,078	\$3,031,005	\$47,500	\$47,500	\$3,866,161			\$3,866,161	This project will repair a damaged section of revetment near RM 4.3 between the SR 169 bridge and non-motorized golf course bridge. The facility provides protection for the SR 169 bridge abutment and is susceptible to further damage. FEMA reimbursement has been secured for this project.
90	McDonald Levee 2020 Repair	WLFL7 MCDONALD 2020 REPAIR	Cedar1	King County			\$0	\$50,000		\$50,000	\$204,451	\$254,451	\$1,693,065	\$47,500	\$47,500	\$2,296,967			\$2,296,967	This project will repair a damaged section of levee near RM 11.6. The facility reduces flood risks to four residential parcels (two occupied structures) and is prone to further damage. FEMA reimbursement has been secured for this project.

No.	Updated Project Name	Technical Project Name	Basin	Service Provider	2024 Inception to Date Expenditure	2025 Inception to Date Budget	2025 Available Budget	2026 Requested	Jan Supplemental Request	2026 Revised	2027 Forecasted	2028 Forecasted	2029 Forecasted	2030 Forecasted	2031 Forecasted	6-Year CIP Total	CIS Year 7-10	CIS 10+ Year	Project Life Total	Comments
91	Progressive Investment Levee Removal	WLFL7 PROGRESSIVE INVST LEVEE	Cedar	King County		\$215,118	\$215,118	\$0		\$0	\$720,199	\$26,444	\$0	\$0	\$0	\$746,643			\$961,761	Renton. This project will remove the Progressive Investment Levee. It is a companion project for the CRT 5 and CRT 5B projects and will provide effective habitat lift not provided at these project sites. The Progressive Investment Levee, near River Mile 8.4 on the Cedar River, is a vestigial flood protection facility that is on public land, is currently eroding and is not directly adjacent to critical infrastructure.
92	Renton City Levee Certification	WLFL7 RENTON LEVEE CERTIFICATN	Cedar	Renton	\$1,273,270	\$4,187,922	\$2,914,652	\$0		\$0	\$812,078	\$0	\$0	\$0	\$0	\$812,078			\$5,000,000	Renton. Levee improvements necessary to satisfy levee certification engineering recommendations.
93	SR 169 Flood Reduction	WLFL7 SR 169 FLOOD REDUCTION	Cedar	King County	\$5,271,917	\$5,331,917	\$60,000	\$0		\$0	\$0	\$0	\$0	\$0	\$0	\$0			\$5,331,917	Near Renton in unincorporated King County. Conduct feasibility study in coordination with WSDOT to evaluate flood risk reduction opportunities, such as elevating SR 169, upgrading the local drainage infrastructure, and / or installation of back flow prevention gates. Funding added in 2019 pending FCD decision to move forward with preliminary design.
94	Tabor-Crowall Revetment 2025 Repair	WLFL7 TABOR-CROWALL 2025 REPAIR		King County		\$20,246	\$20,246	\$0	\$144,754	\$144,754	\$0	\$0	\$0	\$0	\$0	\$144,754			\$165,000	Emergency repair of approximately 60 feet of damage to the Tabor-Crowall revetment caused by the December 2025 flood. Located in Renton, WA, the work will protect a regional fiber-optic trunk line and SR 169.
95	Tabor-Crowall-Brodell Revetments 2020 Repair	WLFL7 TABOR-CRWALL 2020 REPAIR	Cedar	King County	\$1,267,306	\$4,424,673	\$3,157,368	\$2,812,910		\$2,812,910	\$16,302,263	\$3,016	\$0	\$0	\$0	\$19,118,189			\$23,542,862	Near Renton in unincorporated King County. Critical facilities (Utilities, CRT, SR 169). Regional impact extens. Potential human injury from sudden change in conditions. Generally exposed bank along 200 feet - damage likely to occur next major high-flow event.
96	Cedar-Sammamish Subtotal	Cedar-Sammamish Subtotal			\$62,376,406	\$104,249,515	\$41,873,112	\$17,255,666	\$2,674,574	\$19,930,240	\$32,169,058	\$10,740,149	\$16,793,493	\$14,690,000	\$95,000	\$94,417,940	\$22,000,000	\$35,400,000	\$256,067,454	
97																				
98																				
99	Black River Pump Station Improvements	WLFL8 BLACK RIVER PS IMPROVEMENTS	Green	King County			\$0	\$6,057,421		\$6,057,421	\$3,813,684	\$71,433,673	\$121,347,229	\$35,897,590	\$12,443,805	\$250,993,402			\$250,993,402	This project will make extensive improvement to the Black River Pump Station such as a) replacing the control building, trash rake system, and screen spray system; b) replacing important support systems such as engine control panels, cooling systems, oilers and hoists; c) replacing and improving the fish passage system; d) replacing the large engines and overhauling the large pumps; and e) making improvements for seismic stability.
100	Briscoe School Levee 2025 Emergency Repair	WLFL8 BRISCOE SCHL 2025 EM RPR	Green	King County		\$3,260	\$3,260	\$0	\$26,740	\$26,740	\$0	\$0	\$0	\$0	\$0	\$26,740			\$30,000	Emergency repair of multiple voids up to 3 feet deep identified during the December 2025 flood. Work will prevent levee failure and protect dense commercial development in Kent, WA.
101	Black River Pump Station Control Building Replacement	WLFL8 BRPS CONTROL BLDG RPLCMT	Green	King County	\$1,097,730	\$1,405,168	\$307,438	\$0		\$0	\$0	\$0	\$0	\$0	\$0	\$0			\$1,405,168	Renton. This project will design and build the second phase of renovations to the Black River pump station. Major components include replacement of the control building, replacement of the trash rake system, and replacement of the screen spray system.
102	Black River Pump Station Fish Passage Improvements	WLFL8 BRPS FISH PASS IMPRVMTS	Green	King County	\$3,778,553	\$7,288,373	\$3,509,820	\$0		\$0	\$0	\$0	\$0	\$0	\$0	\$0			\$7,288,373	Renton. This project will design and build the fourth phase of renovations to the Black River pump station, revising and replacing the obsolete fish passage systems.
103	Black River Pump Station High-Use Engines	WLFL8 BRPS HIGH-USE ENGINES	Green	King County	\$12,960,618	\$14,460,890	\$1,500,272	\$1,030,186		\$1,030,186	\$0	\$0	\$0	\$0	\$0	\$1,030,186			\$15,491,076	Renton. This project will design and build the first phase of renovations to the Black River pump station, replacing the three smaller pump engines which run much more frequently than the other, larger pump engines.
104	Black River Pump Station Large Engine Replacement	WLFL8 BRPS LARGE ENGINE	Green	King County		\$129,731	\$129,731	\$0		\$0	\$0	\$0	\$0	\$0	\$0	\$0			\$129,731	Renton. This project will design and replace the large engines and overhaul the large pumps at the Black River pump station.
105	Black River Pump Station Seismic Upgrades	WLFL8 BRPS SEISMIC UPGRADES	Green	King County	\$2,512,116	\$2,997,719	\$485,602	\$0		\$0	\$0	\$0	\$0	\$0	\$0	\$0			\$2,997,719	Renton. This project will strengthen and improve the structure and subsurface soils at the Black River Pump Station.
106	Black River Pump Station Support System Upgrades	WLFL8 BRPS SUPPORT SYS UPGRADE	Green	King County	\$2,521,045	\$2,660,907	\$139,861	\$0		\$0	\$0	\$0	\$0	\$0	\$0	\$0			\$2,660,907	Renton. This project will design and build the third phase of renovations to the Black River pump station, replacing support systems such as engine control panels, cooling systems, oilers and hoists.
107	Covington Creek Black Diamond	WLFL8 COVINGTON CR BLK DIAMOND	Green	Black Diamond	\$344,785	\$2,768,500	\$2,423,715	\$0		\$0	\$0	\$0	\$0	\$0	\$0	\$0			\$2,768,500	Black Diamond. Remove the three 6-foot diameter culverts where Lake Sawyer flows into Covington Creek and replace with a bridge to eliminate obstructions for water flow and allow passage for migrating salmon.
108	Desimone Levee Breach 2025 Emergency Repair	WLFL8 DESIMONE BREACH 2025	Green	King County		\$15,736	\$15,736	\$0	\$109,264	\$109,264	\$0	\$0	\$0	\$0	\$0	\$109,264			\$125,000	Emergency repair of a levee breach that occurred during the December 2025 flood. Work will restore levee function and protect densely developed commercial and industrial areas in Tukwila and Renton, WA.
109	Desimone Levee Flood Contingency Plan	WLFL8 DESIMONE CONTGNCY PLAN	Green	King County		\$125,000	\$125,000	\$0		\$0	\$0	\$0	\$0	\$0	\$0	\$0			\$125,000	Advanced measures implemented ahead of the December 2025 flood to install a 1,200-foot seepage blanket along a levee segment with known seepage issues. Work reduces the likelihood of levee failure and protects commercial and industrial development in Tukwila and Renton, WA.
110	Desimone Levee Major Repair	WLFL8 DESIMONE MAJOR REPAIR	Green	King County	\$1,488,523	\$2,348,805	\$860,281	\$1,397,050		\$1,397,050	\$3,552,095	\$26,218,797	\$26,648,944	\$1,900,968	\$0	\$59,717,854			\$62,066,659	Tukwila. Construct a floodwall to design elevation for 18,800 cfs plus 3 feet of freeboard, repairing slope failures, laying the levee embankment slope back and shifting the levee alignment (and trail) landward where possible. The floodwall will connect previously constructed floodwalls at Desimone reaches 1 and 2.
111	Fort Dent Levee 2020 Repair	WLFL8 FORT DENT 2020 REPAIR	Green	King County	\$895,801	\$2,102,997	\$1,207,196	\$755,278		\$755,278	\$2,308,543	\$35,822	\$0	\$0	\$0	\$3,099,643			\$5,202,640	Damage increases vulnerability of the heavily used regional Green River trail and regional soccer complex (Starfire) and Tukwila Park. Erosion increases vulnerability to trail and soccer fields.
112	Galli-Dykstra Levee 2020 Repair	WLFL8 GALLIDYKSTRA 2020 REPAIR	Green	King County	\$1,404,285	\$1,407,644	\$3,358	\$0		\$0	\$0	\$0	\$0	\$0	\$0	\$0			\$1,407,644	Auburn. Complete Phase 1 repair per a request from the City of Auburn. Elevate 3500 feet levee reach to meet FEMA levee certification requirements.
113	Gilliam Creek Fish Barrier Removal	WLFL8 GILLIAM CR FISH BARRIER	Green	Tukwila				\$300,000		\$300,000	\$0	\$0	\$0	\$0	\$0	\$300,000			\$300,000	This project will address the existing fish passgse barrier at the mouth of Gilliam Creek.
114	Green River Pre-Construction Strategic Acquisitions	WLFL8 GREEN PRE-CONSTRCTN ACQ	Green	King County	\$8,958,534	\$22,577,724	\$13,619,190	\$0		\$0	\$5,000,000	\$5,000,000	\$5,000,000	\$5,000,000	\$5,000,000	\$25,000,000			\$47,577,724	Auburn, Kent, Near Renton in unincorporated King County, Tukwila. This project will acquire strategic real estate upon which future large Flood Control District capital projects are dependent, thereby reducing risks to construction schedules for those projects.
115	Green River Improvements 2024	WLFL8 GREEN R IMPRVMT 2024	Green	King County		\$150,000	\$150,000	\$0		\$0	\$0	\$0	\$0	\$0	\$0	\$0			\$150,000	Auburn. Improve SE Green Valley Road near SE Auburn Black Diamond Road and alleviate roadway flooding by raising the road through the application of a thick layer of overlay.
116	Horseshoe Bend Breda Levee Setback	WLFL8 HSB BREDAS SETBACK KENT	Green	Kent	\$931,214	\$15,430,509	\$14,499,295	\$0		\$0	\$0	\$0	\$0	\$0	\$0	\$0			\$15,430,509	Kent. This project will reconstruct the Horseshoe Bend Levee at the Breda reach (RM 24.46-24.72) to a more stable configuration in order to reduce flood risk to the surrounding areas. The project will also raise levee crest elevations to contain the 500-year (0.2% annual chance) flood. This segment of the levee has the lowest factor of safety rating of the Horseshoe Bend levee.
117	Horseshoe Bend McCoy Revetment Realignment	WLFL8 HSB MCCOY REALIGN KENT	Green	USACE	\$530,544	\$3,404,244	\$2,873,700	\$285,246		\$285,246	\$1,320,973	\$15,971	\$0	\$0	\$0	\$1,622,190			\$5,026,434	Kent. This USACE repair project replaces the SWIF capital project originally planned by the FCD. The repair project is anticipated to stabilize the failure of the levee slope, construct a ring levee around an isolated utility, and shift the alignment of the federal levee back to the City of Kent's secondary containment levee.
118	Kent Airport Revetment 2022 Repair	WLFL8 KNT ARPT RVT 2022 REPAIR	Green	King County	\$434,597	\$1,502,447	\$1,067,850	\$0		\$0	\$1,176,979	\$45,879	\$0	\$0	\$0	\$1,222,858			\$2,725,305	Kent: New flood damage repair project. Stabilize over steepened bank and rock revetment that has been undercut by rotational bank failure.

No.	Updated Project Name	Technical Project Name	Basin	Service Provider	2024 Inception to Date Expenditure	2025 Inception to Date Budget	2025 Available Budget	2026 Requested	Jan Supplemental Request	2026 Revised	2027 Forecasted	2028 Forecasted	2029 Forecasted	2030 Forecasted	2031 Forecasted	6-Year CIP Total	CIS Year 7-10	CIS 10+ Year	Project Life Total	Comments
119	Lower Green River Corridor Plan and Environmental Impact Statement	WLFL8 LWR GRN R CORR PLAN/EIS	Green	King County	\$681,468	\$1,198,519	\$517,051	\$0		\$0	\$0	\$0	\$0	\$0	\$0	\$0			\$1,198,519	Auburn, Kent, Renton, Tukwila. Lower Green River Corridor Planning and Environmental Impact Statement.
120	Lower Russell Levee Setback	WLFL8 LWR RUSSELL LEVEE SETBCK	Green	King County	\$57,779,485	\$57,965,925	\$186,440	\$0		\$0	\$0	\$0	\$0	\$0	\$0	\$0			\$57,965,925	Kent. Remove and replace the existing flood containment system of levee and revetments along the right (east) bank of the Green River between river mile 17.85 (S 212th St) and river mile 19.25 (S 231st Way) in the City of Kent to provide long-term flood protection and improve riparian and aquatic habitat. Increased expenditure authority to match interim SWIF adopted by Board of Supervisors.
121	Middle Green Acquisitions	WLFL8 MIDDLE GREEN ACQUISITIONS	Green	King County				\$200,000		\$200,000	\$0	\$0	\$0	\$0	\$0	\$200,000			\$200,000	This project will support ongoing acquisitions of identified habitat priorities within the Middle Green watershed.
122	Mill Creek 2 Expansion	WLFL8 MILL CREEK 2 EXPANSION	Green	Kent				\$200,000		\$200,000	\$0	\$0	\$0	\$0	\$0	\$200,000			\$200,000	This project will support improving and riparian habitat conditions in Mill Creek.
123	Milwaukee Levee #2 Setback	WLFL8 MILWAUKEE LEVEE #2 KENT	Green	Kent	\$2,264,190	\$19,400,000	\$17,135,810	\$0		\$0	\$0	\$0	\$0	\$0	\$0	\$0			\$19,400,000	Kent. Prepare an analysis and study of design and construction alternatives to provide flood protection, scour protection, enable levee certification and secure necessary land rights.
124	O'Connell Revetment 2021 Repair	WLFL8 O'CONNELL 2021 REPAIR	Green	King County	\$299,712	\$796,806	\$497,094	\$0		\$0	\$94,972	\$101,755	\$1,948,706	\$0	\$0	\$2,145,433			\$2,942,239	Kent: Stabilize the O'Connell revetment slope, and move or replace the road shoulder and guardrail.
125	Pump Station 17 2025 Emergency Backup	WLFL8 P-17 2025 EM RPR	Green	King County		\$15,000	\$15,000	\$0		\$0	\$0	\$0	\$0	\$0	\$0	\$0			\$15,000	Emergency rental of pumps to restore pumping capacity following pump failure during the December 2025 flood. Work protects commercial and industrial properties in Tukwila, WA, including Westfield Southcenter.
126	Pipeline and Okimoto Levees 2025 Repair	WLFL8 PIPELINE OKIMOTO 2025	Green	King County		\$53,857	\$53,857	\$0	\$71,143	\$71,143	\$0	\$0	\$0	\$0	\$0	\$71,143			\$125,000	Emergency repair of seepage identified by flood patrol during the December 2025 flood. Approximately 230 feet of levee (200 feet of Pipeline Levee and 30 feet of Okimoto Levee) will be repaired to prevent failure and protect dense residential condominium development in Kent, WA.
127	Signature Point Levee Setback	WLFL8 SIGNATURE PT RVTMNT	Green	Kent	\$1,529,793	\$47,150,164	\$45,620,371	\$0		\$0	\$9,595,255	\$0	\$0	\$0	\$0	\$9,595,255			\$56,745,419	Kent. Project provides increased level of protection to 1.5 miles of Lower Green River Corridor. Alternative selected by Executive Committee.
128	Somes Dolan Levee 2025 Emergency Repair	WLFL8 SOMES DOLAN 2025 EM RPR	Green	King County		\$18,134	\$18,134	\$0	\$31,866	\$31,866	\$0	\$0	\$0	\$0	\$0	\$31,866			\$50,000	Emergency repair of levee seepage identified by flood patrol during the December 2025 flood. Work will reduce the risk of levee failure and protect dense residential development in Kent, WA.
129	Tukwila 205 Levee Gunter Floodwall	WLFL8 TUK-205 GUNTER FLOODWALL	Green	King County	\$2,061,149	\$13,006,795	\$10,945,646	(\$2,221,826)	(\$2,221,826)		\$2,662,988	\$7,535,569	\$7,761,636	\$102,568	\$0	\$15,840,935			\$28,847,730	Tukwila. This project will construct a facility to bring this levee segment in compliance with certification requirements for structural stability and raise the levee to roughly the 500 year event.
130	Tukwila 205 Levee Ratolo Floodwall	WLFL8 TUK-205 RATOLO FLOODWALL	Green	King County		\$350,000	\$350,000	\$0		\$0	\$1,400,000	\$50,000	\$0	\$0	\$0	\$1,450,000			\$1,800,000	Tukwila. This project will construct a 0.15 mile floodwall and sloped embankment to protect adjacent businesses from flooding. The floodwall alignment (including embankment slope, factors of safety, and necessary real estate) will be finalized during the project design phase.
131	Tukwila-205 Levee Gaco-Segale Segment	WLFL8 TUK-205 USACE GACO-SEGAL	Green	USACE	\$1,128,356	\$1,894,636	\$766,280	\$38,011		\$38,011	\$29,504	\$0	\$0	\$0	\$0	\$67,515			\$1,962,151	Tukwila. US Army Corps led project to replace 3500 ft. of Tukwila 205 levee in-place replacement to bring up to 500-year level of protection per the adopted interim SWIF. The USACE will cost-share up to 100 year level of protection. Requires cooperation agreement.
132	Tukwila 205 Levee Sinkhole 2025 Repair	WLFL8 TUKWILA 205 SINKHOLE REP	Green	King County		\$17,044	\$17,044	\$0	\$57,956	\$57,956	\$0	\$0	\$0	\$0	\$0	\$57,956			\$75,000	Emergency repair of a levee piping failure identified by flood patrol during the December 2025 flood. Work will prevent potential levee failure and protect commercial and industrial properties in Tukwila, WA, including Westfield Southcenter.
133	South Park Flood Prevention	WLFLS S PARK FLOOD PREVENTION	Duwamish	Seattle		\$3,361,615	\$3,361,615	\$1,300,000		\$1,300,000	\$0	\$0	\$0	\$0	\$0	\$1,300,000			\$4,661,615	Seattle. Installation and maintenance of a temporary barrier along the Duwamish River in South Park, including project management, staging and demobilization, and related work; culturally appropriate flood-related education, outreach, and engagement on near and long-term flood reduction strategies, and communication materials.
134	Sea Level Rise Adaptation Study	WLFLS SEA LEVEL RISE ADAPTATION	Duwamish	King County			\$0	\$400,000		\$400,000	\$0	\$0	\$0	\$0	\$0	\$400,000			\$400,000	This project will conduct a study of sea level rise affecting a neighborhood along the Duwamish River in the South Park Neighborhood. Costs include staffing, a consultant study, outreach and engagement.
135	Green-Duwamish Subtotal	Green-Duwamish Subtotal			\$103,602,499	\$226,008,146	\$122,405,647	\$9,741,366	\$296,969	\$10,038,335	\$30,954,993	\$110,437,466	\$162,706,515	\$42,901,126	\$17,443,805	\$374,482,240	\$0	\$0	\$600,490,387	
136																				
137																				
138	212th Avenue SE at SR 164 Flood Prevention	WLFL9 212TH AVE SE @ SR 164	White	King County		\$190,000	\$190,000	\$0		\$0	\$0	\$0	\$0	\$0	\$0	\$0			\$190,000	Enumclaw. Improve the drainage system to alleviate neighborhood flooding. May require improvements outside of the road right-of-way.
139	Charlie Jones Downstream Culvert Repair	WLFL9 CHARLIE JONES DS CULV	White	King County	\$196,074	\$1,650,000	\$1,453,926	\$0		\$0	\$0	\$0	\$0	\$0	\$0	\$0			\$1,650,000	Auburn. This project will analyze culvert replacement and road-raising options and implement the preferred option.
140	Government Canal HESCO Barriers 2025	WLFL9 GOVT CNL HESCOS 2025 EM	White	King County		\$850,000	\$850,000	\$0	\$210,000	\$210,000	\$0	\$0	\$0	\$0	\$0	\$210,000			\$1,060,000	Emergency reconstruction of the damaged flow-control structure at Government Canal to prevent flooding in the City of Pacific.
141	Oravetz School Revetment 2025 Emergency Install	WLFL9 ORAVETZ SCHL 2025 EM RPR	White	King County		\$250,000	\$250,000	\$0	\$750,000	\$750,000	\$0	\$0	\$0	\$0	\$0	\$750,000			\$1,000,000	Emergency installation of approximately 520 feet of seepage blanket on the landward side of the Oravetz School revetment to reduce flood risk in the City of Auburn.
142	City of Pacific HESCO Barrier 2025 Emergency Installation	WLFL9 PACFC HESCO 2025 EMGNCY INSTALL	White	King County		\$370,000	\$370,000	\$0	\$0	\$0	\$0	\$0	\$0	\$0	\$0	\$0			\$370,000	Emergency repair of the Pacific City Park HESCO facility damaged in the December 2025 flood, including additional repairs and improvements at other HESCO locations to reduce flood risk to the City of Pacific.
143	City of Pacific HESCO Barrier 2025 Breach Emergency Repair	WLFL9 PACFC HESCO 2025 BREACH RPR	White	King County		\$1,000,000	\$1,000,000	\$0	\$1,000,000	\$1,000,000	\$0	\$0	\$0	\$0	\$0	\$1,000,000			\$2,000,000	Emergency repair of the Pacific City Park HESCO facility damaged in the December 2025 flood, including additional repairs and improvements at other HESCO locations to reduce flood risk to the City of Pacific.
144	White River Acquisitions	WLFL9 WHITE RIVER ACQUISITIONS	White	King County			\$0	\$0	\$1,000,000	\$1,000,000	\$0	\$0	\$0	\$0	\$0	\$1,000,000			\$1,000,000	This project will acquire flood-prone properties in the White River basin to eliminate the risk of flood damage when river flows overtop the existing levees or to provide right of way for levee construction.
145	Roegner Park HESCO Barriers 2025 Emergency Construction	WLFL9 ROEGNER PRK HESCO 2025	White	King County		\$100,000	\$100,000	\$0	\$940,000	\$940,000	\$0	\$0	\$0	\$0	\$0	\$940,000			\$1,040,000	Emergency construction of 475 feet of setback HESCO structure in Roegner Park to reduce flood risk in the City of Auburn.
146	White River Right Bank Upstream of A Street 2025 Emergency Construction	WLFL9 WHITE R RB US A ST 2025	White	King County		\$50,000	\$50,000	\$0	\$320,000	\$320,000	\$0	\$0	\$0	\$0	\$0	\$320,000			\$370,000	Emergency work to repair and improve the A-Street Trailer Court HESCO facility to reduce flood risk for residents in Auburn and Pacific.
147	Charlie Jones Upstream Culvert Repair	WLFL9 CHARLIE JONES US CULV	White	King County	\$934,991	\$992,852	\$57,861	\$0		\$0	\$0	\$0	\$0	\$0	\$0	\$0			\$992,852	Auburn. This project will analyze culvert replacement and road-raising options and implement the preferred option.
148	A Street 2022 Hescos	WLFL9 A STREET 2022 HESCOS	White	King County	\$304,293	\$420,000	\$115,707	(\$68,430)		(\$68,430)	\$48,695	\$50,156	\$51,661	\$0	\$0	\$82,082			\$502,082	Pacific. Complete. Reduces flood elevations that impact residential neighborhoods in the City of Pacific (200 homes, with \$52 million of assessed and \$13 million content value), improves sediment storage and enhances habitat.
149	White River Capital Improvement Strategy	WLFL9 WHITE RIVER CIS	White	King County		\$150,000	\$150,000	\$0		\$0	\$300,000	\$1,000,000	\$0	\$0	\$0	\$1,300,000			\$1,450,000	Pacific. Identify and prioritize near-, mid-, and long-term capital projects for Flood Control District funding along the White River.
150	Countyline to A Street Levee Setback	WLFL9 COUNTYLINE TO A STREET	White	King County	\$23,899,869	\$24,146,323	\$246,454	\$139,246		\$139,246	\$0	\$0	\$0	\$0	\$0	\$139,246			\$24,285,569	Pierce County. Complete. Reduces flood elevations that impact residential neighborhoods in the City of Pacific (200 homes, with \$52 million of assessed and \$13 million content value), improves sediment storage and enhances habitat.

No.	Updated Project Name	Technical Project Name	Basin	Service Provider	2024 Inception to Date Expenditure	2025 Inception to Date Budget	2025 Available Budget	2026 Requested	Jan Supplemental Request	2026 Revised	2027 Forecasted	2028 Forecasted	2029 Forecasted	2030 Forecasted	2031 Forecasted	6-Year CIP Total	CIS Year 7-10	CIS 10+ Year	Project Life Total	Comments
151	Pacific Right Bank Flood Protection Project	WLFL9 RIGHT BANK LEVEE SETBACK	White	King County	\$16,781,235	\$19,614,360	\$2,833,125	\$1,850,164		\$1,850,164	\$3,525,431	\$1,166,002	\$2,315	\$2,385	\$366,523	\$6,912,820			\$26,527,180	Pacific. Construct a new levee setback in the City of Pacific, extending from BNSF railroad bridge embankment to endpoint at Butte Ave. by White River Estates neighborhood.
152	White Subtotal	White Subtotal			\$42,116,462	\$49,783,535	\$7,667,073	\$1,920,980	\$4,220,000	\$6,140,980	\$3,874,126	\$2,216,158	\$53,976	\$2,385	\$366,523	\$12,654,148	\$0	\$0	\$62,437,683	
153																				
154																				
155	Steve Bleifuhs Memorial Flood Reduction Grant Program	WLFLG FLOOD REDUCTION GRANTS	Countywide	Grant	\$41,623,623	\$87,998,844	\$46,375,221	\$14,307,228		\$14,307,228	\$14,818,263	\$15,325,845	\$15,832,439	\$16,352,265	\$16,889,921	\$93,525,961			\$181,524,805	Competitive grant program for flood reduction projects. Increases as a proportion of total FCD tax revenue.
156	Lake Sammamish Dock and Shoreline Grant Program	WLFLG LK SAMM FL MIT GRANTS	Sammamish	Grant	\$82,950	\$1,000,000	\$917,051	\$0		\$0	\$0	\$0	\$0	\$0	\$0	\$0			\$1,000,000	Issaquah: Funding for a near-term grant program to help fund flood mitigation options for lakeside landowners, such as floating docks, relocation or elevation of outbuilding and other damage-reduction and floodproofing measures. Established pursuant to FCDEM2021-3.
157	Water Resource Inventory Area (WRIA) Grants	WLFLG WRIA GRANTS	Countywide	Grant	\$59,062,867	\$95,371,621	\$36,308,754	\$12,056,301		\$12,056,301	\$12,486,936	\$12,914,661	\$13,341,554	\$13,779,597	\$14,232,665	\$78,811,714			\$174,183,335	Cooperative Watershed Management Grant Program; priorities recommended by watershed groups. Increase based on assumed inflation rate.
158	Flood Program Effectiveness Monitoring	WLFLM EFFECTIVENESS MONITORING	Countywide	King County	\$6,911,085	\$8,090,874	\$1,179,789	\$892,035		\$892,035	\$1,101,440	\$1,019,066	\$539,827	\$504,760	\$789,051	\$4,846,178			\$12,937,052	Evaluation of capital projects to determine effectiveness and identify project design improvements.
159	Subregional Opportunity Fund	WLFO SUBREGNL OPPRTNTY FUND	Countywide	Grant	\$69,150,423	\$94,000,123	\$24,849,700	\$8,651,037		\$8,651,037	\$8,733,017	\$8,813,501	\$8,894,114	\$8,975,085	\$9,055,211	\$53,121,965			\$147,122,088	Allocation to all King County jurisdictions for flooding, water quality, or watershed management projects. Increases as a proportion of total FCD tax revenue.
160	Central Charges	WLFLX CENTRAL CHARGES	Countywide	King County	\$2,178,064	\$2,882,458	\$704,394	\$395,606		\$395,606	\$300,000	\$300,000	\$300,000	\$300,000	\$300,000	\$1,895,606			\$4,778,064	Central charges related to the FCD's capital fund.
161	Duwamish King Tide Forecast	WLFLX DUWAMISH KING TIDE FRCST	Countywide	King County	\$0	\$625,000	\$625,000	\$0		\$0	\$0	\$0	\$0	\$0	\$0	\$0			\$625,000	The FCD directed King County to develop and implement an expansion of the county Flood Warning Center to include forecasted King Tide events on the Duwamish River by October 1, 2024.
162	Climate Corps	WLFLX CLIMATE CORPS	Countywide	King County	\$99,032	\$750,000	\$650,968	\$0		\$0	\$0	\$0	\$0	\$0	\$0	\$0			\$750,000	Creates or augments an existing internship program focused on developing workforce pathways creating, career opportunities, and living wage jobs for youth related to climate change, habitat restoration and/or flood risk reduction.
163	Earth Corps	WLFLX EARTHCORPS	Countywide	EarthCorps				\$1,300,000		\$1,300,000	\$0	\$0	\$0	\$0	\$0	\$1,300,000			\$1,300,000	TBD
164	Farmland Lease	WLFLX FARMLAND LEASE	Countywide	King County	\$212	\$200,000	\$199,788	\$0		\$0	\$0	\$0	\$0	\$0	\$0	\$0			\$200,000	Directs King County to lease 30 acres of farmland consistent with the guidelines of the King County Farmland Lease Program.
165	Countywide Strategic Acquisitions	WLFLX COUNTYWIDE STRATEGIC ACQ	Countywide	King County	\$6,536	\$4,000,000	\$3,993,464	\$0		\$0	\$0	\$0	\$0	\$0	\$0	\$0			\$4,000,000	This project acquires properties with a connection to flooding as directed by the Flood District Board of Supervisors.
166	Flood Warning Center IT Upgrades	WLFLX FWC IT UPGRADES	Countywide	King County	\$1,179,496	\$1,500,000	\$320,504	(\$165,539)		(\$165,539)	\$0	\$0	\$0	\$0	\$0	(\$165,539)			\$1,334,461	Replace existing IT systems that are outdated and at risk for failure.
167	PL 84-99 Easement Initiative	WLFLX PL84-99 EASEMENTS	Countywide	King County			\$0	\$430,000		\$430,000	\$1,640,000	\$1,671,000	\$0	\$0	\$0	\$3,741,000			\$3,741,000	
168	Technical Flood Studies	WLFLX TECHNICAL FLOOD STUDIES	Countywide	King County			\$0	\$2,055,000		\$2,055,000	\$1,275,209	\$607,000	\$480,000	\$400,000	\$400,000	\$5,217,209			\$5,217,209	This is an ongoing program for multi-year technical studies, such as the levee breach analysis, sediment hazard analysis, and general flood studies on various rivers.
169	Flood Emergency Contingency	WLFLX FLOOD EMERGENCY CONTGNCY	Countywide	King County	\$419,042	\$1,419,042	\$1,000,000	\$750,000		\$750,000	\$500,000	\$500,000	\$500,000	\$500,000	\$500,000	\$3,250,000			\$4,669,042	Contingency for emergency response actions during a flood event and for stockpiling materials so as to be readily available for project construction.
170	Countywide Subtotal	Countywide Subtotal			\$180,713,328	\$297,837,961	\$117,124,633	\$40,671,668	\$0	\$40,671,668	\$40,854,865	\$41,151,073	\$39,887,934	\$40,811,707	\$42,166,848	\$245,544,094	\$0	\$0	\$543,382,056	
171																				
172	Grand Total	Grand Total			\$464,277,192	\$801,976,031	\$337,698,839	\$94,329,275	\$7,266,543	\$101,595,818	\$169,432,772	\$194,650,441	\$247,780,674	\$144,888,378	\$127,275,992	\$985,624,074	\$125,450,000	\$121,300,000	\$2,034,350,106	

ATTACHMENT I - LAKE SAMMAMISH DOCK AND SHORELINE GRANT PROGRAM - 2025 GRANT RECOMMENDATIONS

Applicant	Project Name	Description	KC Council District	Requested Amount	Match	Offer
Chen, Wendy	<i>Chen Shoreline Softening and Planting</i>	Enhance green shoreline erosion control and improve shallow water habitat by (1) plantings to create vegetated buffers at water's edge; (2) removing construction debris (left in water by previous owner(s)) and replace with appropriate-sized gravels, and restore beach slope, and (3) log installation.	6	\$17,100	\$4,275	\$0
Crandall, Douglas	<i>Crandall Floating Dock Replacement</i>	Provided assistance through this grant, we intend to remove and replace our current floating dock, which has been in place for 40+ years. As constructed, the dock does not allow any sunlight to reach the lake, and it is not sustainable with the increased turbulence from wake-surfing (over the last 5-10 years), given its lack of durability. We will also replace the movable ramp from our bulkhead to the dock with a permanent solution.	6	\$41,620	\$13,875	\$41,620
Huang, Lijen	<i>Huang Dock Replacement</i>	Replace the existing fixed dock with a floating dock with grated deck, and install green shoreline erosion control on the beach within our property line. By installing these ecological-friendly infrastructures, we hope to reduce flood damage risk. A grated dock surface can also enhance salmon-friendly habitat, aligning with King County's goals to protect shoreline infrastructure and improve aquatic ecology in Lake Sammamish.	6	\$100,000	\$26,670	\$80,000
Inbar, Eyal	<i>Dock Replacement Inbar</i>	The proposed project includes the complete removal of the current fixed dock and the installation of a new floating dock designed to comply with salmon-friendly best practices. This upgrade will improve shoreline habitat conditions by allowing greater light penetration and minimizing impacts on nearshore aquatic environments.	6	\$74,900	\$25,100	\$74,900
Ko, Andrew	<i>Ko Dock Replacement</i>	Replace existing fixed dock that is submerged in the winter with a floating dock system that reduces shading that is detrimental to salmonids.	6	\$88,500	\$29,500	\$0
Krause, Alexandra	<i>Krause Shoreline Planting and Erosion Control</i>	Add plants and rocks to help hold up the bank next to our beach to help control erosion.	3	\$20,000	\$5,000	\$15,000
Kwun, Richard	<i>Kwun Permanent Removal of Milfoil and Invasive Plants from Shore and Dock</i>	Remove non-native plants from the lake, in the area near my shore and surrounding my dock, with a combination of manual removal and placement of benthic screens.	6	\$6,000	\$2,000	\$0
Lane, Mira	<i>Lane Sherman Green Shoreline Project</i>	Transform an 80-foot section of Lake Sammamish shoreline into a multi-layered green shoreline to stabilize the bank, improve salmon habitat, and enhance lake access. As the new owners, we are committed to reversing decades of neglect. This grant offers an excellent opportunity for restoration of ecological health, mitigation of flooding impacts, and safety for lake users.	6	\$100,000	\$33,500	\$100,000
Lang, Brook	<i>Lang Dock Replacement</i>	Replace a floating dock with a fixed dock	3	\$100,000	\$50,000	\$0
Le, Trieu	<i>Le Shoreline Planting and Erosion Control</i>	The project will implement green shore erosion control by removing the existing eroded bulkhead and replacing it with a soft-shore "green shoreline" that restores nearshore habitat, improves shoreline stability, reduces long-term maintenance, enhances aesthetics, while reducing hillside erosion, landslide and flood impacts.	6	\$100,000	\$21,670	\$65,000

ATTACHMENT I - LAKE SAMMAMISH DOCK AND SHORELINE GRANT PROGRAM - 2025 GRANT RECOMMENDATIONS

Applicant	Project Name	Description	KC Council District	Requested Amount	Match	Offer
Mason, Robin	<i>Mason Dock Replacement</i>	Create a usable long lasting dock system that will alleviate the flooding issues and be functional and useable through all seasons and weather conditions. This also includes more flexible usability for the owners and their families with safer water access and boat moorage. While also creating a better shoreline management for habitat for the fish and other marine life that live in Lake Sammamish.	3	\$64,500	\$21,500	\$64,500
Nagarajan, Lakshminarayanan	<i>Nagarajan - 2540 W Lk Sammamish Dock Replacement</i>	Replace our fixed dock that gets flooded each year with a floating dock system to mitigate flood risk and enhance the natural shoreline. This project directly aligns with the program's goals by reducing erosion and improving nearshore habitat for juvenile salmon.	6	\$100,000	\$33,335	\$100,000
Nikfard, Lori and Jack	<i>Nikfard Dock Repairs and Shoreline Planting / Concrete Repairs</i>	New dock meeting current code with a grated top to help the salmon population in Lake Sammamish. Erosion control landscaping and concrete repairs.	6	\$50,460	\$12,700	\$0
Nikfard, Penny	<i>Nikfard Shoreline Erosion Control</i>	Our shoreline is quite eroded. We would like to stabilize it and prevent further erosion by reinforcing the shoreline itself. We would work with a contractor to help us do this by adding logs, plants and more sand along our beachfront.	6	\$27,475	\$6,670	\$20,000
Salemann, Victor	<i>Salemann Dock Repair, Bulkhead Removal and Beach Restoration</i>	Remove the existing modular block wall located at the OHWM. Soil and sod would be removed to extend a natural beach with native plantings installed upland as far as feasible.	3	\$100,000	\$11,670	\$35,000
Sikka, Ajay	<i>Sikka Dock Replacement</i>	Replace our dock with a more eco-friendly dock. It is a floating dock that was built 40+ years ago. It does not meet most of the current code.	3	\$100,000	\$50,000	\$0
Stirn, Andrew	<i>Stirn Shoreline Erosion Control with Native Plantings and Salmonid Habitat Improvements</i>	Regrade and bolster the escarpment against further erosion using natural solutions (e.g. anchored logs, stones, live revetment) and install a beach with wave attenuation features, native plantings, and and gravel suitable for salmonid habitat. These improvements will reduce shoreline erosion, enhance flood resilience, and permanently restore critical habitat for juvenile salmon while eliminating sources of contamination from legacy armoring.	3	\$93,750	\$31,250	\$93,750
TOTALS				\$1,184,305	\$378,715	\$689,770

King County Flood Control District
Flood Program Financial Plan: 2026 Budget and 6-Year CIP

1/28/2026

	2024 Actual	2025 Adopted	2025 Revised	2026 Revised	2027 Projected	2028 Projected	2029 Projected	2030 Projected	2031 Projected
Beginning Balance	26,835,949	26,719,546	19,831,997	26,295,068	23,519,433	9,842,236	(13,986,761)	(47,300,852)	(89,705,228)
Revenue									
Flood District									
Flood District Levy ¹	58,181,958	83,649,793	83,736,588	84,565,371	85,366,734	86,153,480	86,941,481	87,732,989	88,516,233
Interest Earnings ²	2,113,500	69,215	1,149,892	2,070,902	1,852,303	775,138	(1,101,545)	(3,725,240)	(7,064,851)
Miscellaneous Revenue ³	228,936	250,000	250,000	250,000	250,000	250,000	250,000	250,000	250,000
King County									
Grants ⁴	119,893	0	0	0	0	0	0	0	0
Miscellaneous Revenue ⁵	109,723	100,000	40,000	40,000	40,000	40,000	40,000	40,000	40,000
Total Revenue	60,754,010	84,069,008	85,176,480	86,926,273	87,509,037	87,218,618	86,129,936	84,297,750	81,741,382
Expenditure									
District Administration ⁶	(2,177,473)	(2,488,637)	(2,488,637)	(2,488,637)	(2,563,296)	(2,563,296)	(2,640,195)	(2,640,195)	(2,719,401)
Operating Expenditure	(12,886,001)	(16,282,400)	(16,582,400)	(17,535,208)	(18,061,264)	(18,603,102)	(19,161,195)	(19,736,031)	(20,328,112)
Capital Expenditure ⁷	(52,694,488)	(59,642,371)	(59,642,371)	(69,678,064)	(80,561,673)	(89,881,217)	(97,642,636)	(104,325,899)	(113,790,494)
Total Expenditure	(67,757,962)	(78,413,408)	(78,713,408)	(89,701,909)	(101,186,234)	(111,047,616)	(119,444,026)	(126,702,125)	(136,838,007)
Ending Fund Balance (Cash)	19,831,997	32,375,146	26,295,068	23,519,433	9,842,236	(13,986,761)	(47,300,852)	(89,705,228)	(144,801,853)
Fund Balance Reserves									
Subregional Opportunity Fund Reserve		(19,333,346)	(14,852,386)	(16,452,396)	(17,629,789)	(18,510,303)	(19,183,092)	(19,710,724)	(20,136,154)
Grants Reserve		(55,715,605)	(57,811,181)	(63,972,780)	(69,371,264)	(74,184,945)	(78,552,793)	(82,600,338)	(86,429,422)
Cash Advance		(4,000,000)	(4,000,000)	(4,000,000)	(4,000,000)	(4,000,000)	(4,000,000)	(4,000,000)	(4,000,000)
Self-insured Retention		(6,500,000)	(6,500,000)	(6,500,000)	(6,500,000)	(6,500,000)	(6,500,000)	(6,500,000)	(6,500,000)
District Admin 90-Day Reserve		(622,159)	(622,159)	(622,159)	(640,824)	(640,824)	(660,049)	(660,049)	(679,850)
District Operations 90-Day Reserve		(3,952,039)	(4,145,600)	(4,383,802)	(4,515,316)	(4,650,776)	(4,790,299)	(4,934,008)	(5,082,028)
Total Reserves		(90,123,149)	(87,931,327)	(95,931,137)	(102,657,193)	(108,486,848)	(113,686,232)	(118,405,118)	(122,827,455)
Ending Unreserved Fund Balance ⁸	19,831,997	(71,393,736)	(61,636,258)	(72,411,704)	(92,814,957)	(122,473,609)	(160,987,085)	(208,110,346)	(267,629,308)
Target Fund Balance	0	0	0	0	0	0	0	0	0
Budgetary Carryover Reserves	(302,166,870)	(253,850,899)	(282,955,512)	(314,873,266)	(403,744,364)	(508,513,588)	(658,651,626)	(699,214,104)	(712,699,601)
Ending Budgetary Fund Balance ⁸	(282,334,873)	(235,121,485)	(256,660,444)	(291,353,833)	(393,902,128)	(522,500,349)	(705,952,478)	(788,919,332)	(857,501,454)

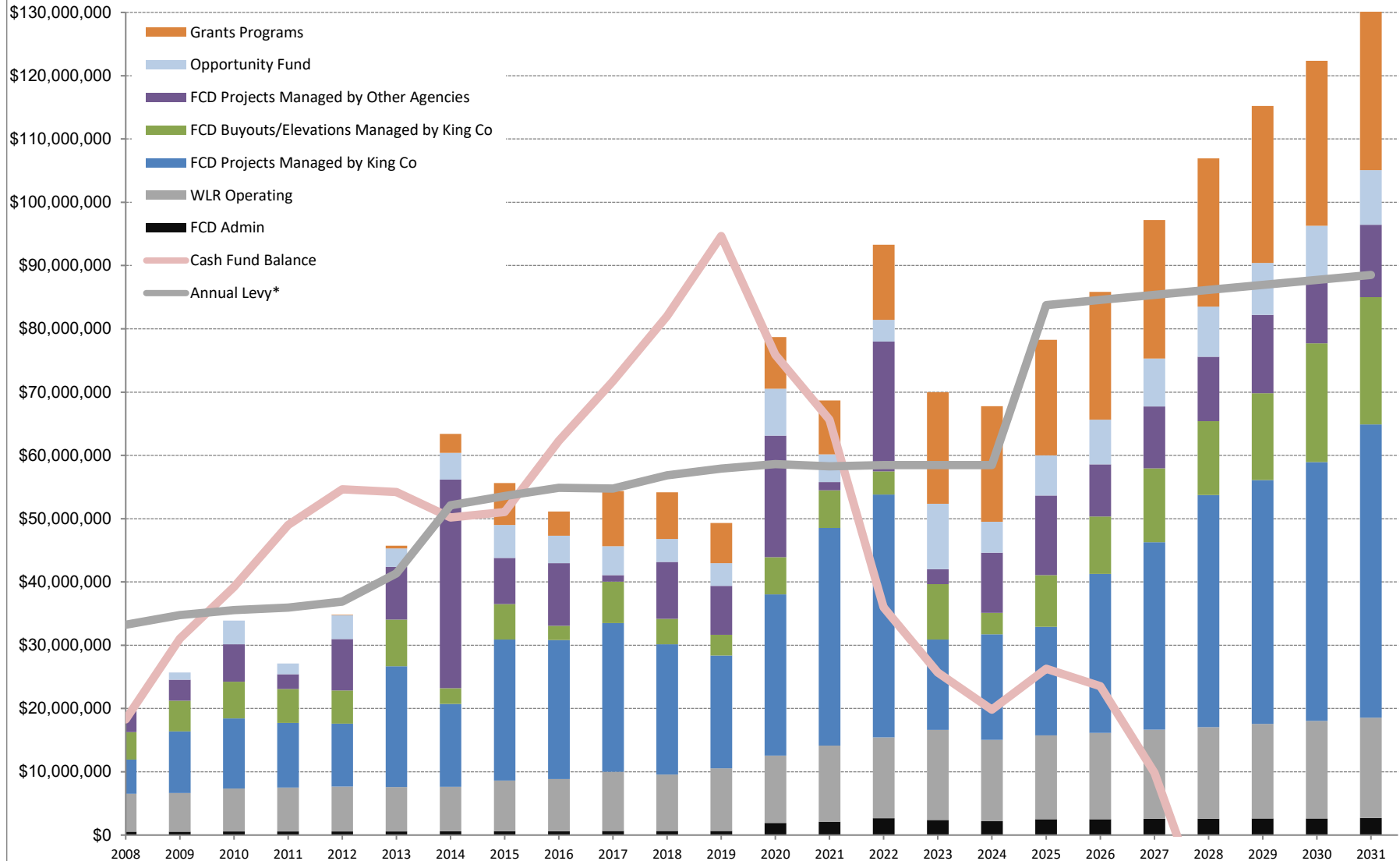
Flood Program Financial Plan: 2026 Budget and 6-Year CIP

Notes:

- 1 Property tax forecast provided by the Office of Economic and Financial Analysis in March 2025, less undercollection assumption of 1%.
- 2 Future interest earnings approximated using the ration of prior year interest to prior year fund ending fund balance.
- 3 District miscellaneous revenue due to multiple sources such as state forest sales, private timber harvest tax, unrealized investments, leasehold excise taxes, and immaterial corrections from prior years.
- 4 Grant revenue is assumed only for grants that have been awarded or where an award is likely and imminent.
- 5 Miscellaneous revenue due to multiple sources such as state forest sales, private timber harvest tax, rent from tenants of acquired real estate, and immaterial corrections from prior years.
- 6 Costs based on contract established under FCD 2008-07 for District executive services, and inflated at 3% in succeeding years.
- 7 In general, construction projects assume inflationary increases of 3% per year.
- 8 The budgetary fund balance assumes 100% expenditure of all budgeted amounts and is used to understand the District's total budgetary commitment.
- 9 The capital expenditure is equal to the expenditure rate times the sum of the new capital appropriation and carryover. Rationale for the expenditure rates forecasted for A-E in the capital program is as follows:
 - A. Based on prior year experience and knowledge of existing staff capacity to implement construction projects implemented by WLR Division.
The expenditure rate increases at the end of the six years as new appropriation decreases and carryover projects are completed.
 - B. Based on prior year experience for acquisitions and home elevations, where expenditure patterns are strongly influenced by factors such as landowner willingness. Rate shown here is similar to the expenditure rate for acquisition-focused funds such as King County’s Conservation Futures Trust (CFT).
 - C. Based on increase from past expenditure rates as city projects move through the engineering design phase toward construction.
 - D-E. Based on prior year experience with expenditure rates for these capital grant programs, which have a 2-3 year minimum time lag between appropriation and expenditures due to funding allocation decision-making process, execution of agreements for awarded projects, and reimbursement of eligible expenditures during or following implementation by the grant recipient.
While the Opportunity Fund does not require time for an allocation process, many jurisdictions choose to accrue funding over multiple years which limits the expenditure rate.
Note that a constant expenditure rate results in increased expenditures as unspent allocations are carried over each year.
- 8 The Unreserved Fund Balance is the remaing balance less reserves described in resolution FCD2016-21.1 adopting a fund balance reserve policy. While the policy provides general guidance on types of reserves, it does not specify their quantification. The reserve
- 10 Total New Capital Appropriation corresponds to the "Grand Total" shown in each year on Attachment H.

DRAFT: Actual and Forecasted Flood District Expenditures by Type

January 28, 2026





REVISED STAFF REPORT

Agenda Item:	7	Name:	Michelle Clark
Proposed Legislation:	FCD2026-03.2	Date:	February 10, 2025

Proposed FCD Resolution FCD2026-03.2: A Resolution relating to the operation and finances of the King County Flood Control Zone District; adopting a revised 2026 budget, capital budget, six-year capital improvement program for 2026-2031, and amending Resolution FCD2025-12.

Proposed Resolution FCD2026-03.2 does two things: (1) allocates the \$689,770 for the pilot Lake Sammamish Dock and Shoreline Grants Program pursuant to the 2025 adopted budget and (2) funds the actions necessary for the December 2025 flood fight and urgently needed immediate post-flood activities.

Lake Sammamish Dock and Shoreline Grants Program

Pursuant to Executive Committee Motion FCDECM2021-3, directing the King County Flood Control District (District) to continue working collaboratively with King County to complete thirty percent (30%) design of the Willowmoor Floodplain Restoration Project, the District created, as a pilot, the Lake Sammamish Dock and Shoreline Grants Program, to provide grant funding for projects with flood risk reduction benefits along the shoreline of Lake Sammamish, including, but not limited to, relocating outbuildings outside of the flood hazard areas, implement green shoreline erosion control or shoreline plantings, and replacing fixed docks with floating docks, as part of its 2022 work program and budget. District worked with King County to create this innovative pilot grant program and opened the grant applications in August of 2025. The grant applications were capped at \$100,000 per project. The program has \$800,000 in grant funds and we received 17 grant applications totaling \$1,184,305.

King County staff provided technical review of the 17 grant applications, A selection committee composed of the director of water and land resources division of the King County Department of Natural Resources and Parks, the District's executive director, and Morgan Irwin, a former state representative and Enumclaw city councilmember reviewed the 2025 applications for grant funds and made a unanimous recommendation regarding them to the District. The committee recommends fully awarding six applications, partially awarding five applications, and denying six applications. Approval of these recommendations is simply the allocation of already budgeted funds as does not require a new budget appropriation. The unanimous recommendations are Attachment I to the proposed resolution.

December 2025 Flood Fight and Post-Flood Event

On December 8, the first of two atmospheric rivers produced historic flooding across King County, setting all-time records for portions of the Snoqualmie and Cedar rivers. The flooding lasted three weeks, with the Flood Warning Center closing on December 31.

Of the six major rivers in King County (Cedar River, Green River, Snoqualmie River Basin, South Fork Skykomish River, Tolt River, and White River), five reached Flood Phase 4 during the storm, the Tolt River only reached Flood Phase 3. Issaquah Creek also reached Flood Phase 4. This volume and duration of flooding required an extraordinary emergency response.

Emergency repairs were implemented to flood risk reduction infrastructure during the December flood, which continued into the month of January. The amount expended for emergency repairs in December 2025 proposed for payment in 2026 from unspent appropriations from the 2025 budget is \$2,958,457.

Furthermore, capital project flood repairs have been identified for 2026 that were not anticipated at the time of 2026 budget adoption. The amount required for capital project flood repairs in this supplemental request for the 2026 budget is \$7,266,543.

The list below identifies the proposed adjustments for emergency repair projects to the 2025 budget and proposed new flood-related expenses for projects to add to the 2026 budget, capital budget, and six-year capital improvement program for 2026-2031. All items on the list below are proposed for inclusion in this 2026 budget amendment as a direct result of damage sustained during the December 2025 flood event.

Project Name	Dec 2025 Supplemental Request	Jan 2026 Supplemental Request
CRT3 Emergency Repair	70,180	
Tabor-Crowall 2025 Repair	20,246	144,754
Briscoe School Levee 2025 Emergency Repair	3,260	26,740
Desimone Levee Breach 2025 Emergency Repair	15,736	109,264
Desimone Levee Contingency Plan	125,000	
P-17 2025 Emergency Repair	15,000	
Pipeline and Okimoto Levees 2025 Repair	53,857	71,143
Somes Dolan Levee 2025 Emergency Repair	18,134	31,866
Tukwila 205 Levee Sinkhole Repair	17,044	57,956
Government Channel HESCO Barrier 2025	850,000	210,000
Oravetz School Revetment 2025 Emergency Install	250,000	750,000
City of Pacific HESCO Barrier 2025 Emergency Install	370,000	

City of Pacific HESCO Barrier 2025 Breach Emergency Repair	1,000,000	1,000,000
Roegner Park HESCO Barrier 2025 Emergency Construction	100,000	940,000
White River Right Bank Upstream of A Street 2025 Emergency Construction	50,000	320,000
Town of Skykomish Left Bank Levee 2025 Emergency Repair		75,000
Cedar River Residential Flood Mitigation		2,000,000
Cedar River Trail Revetment 1 2025 Emergency Repair		300,000
Cedar River Trail Revetment 3 2025 Emergency Repair		229,820
White River Acquisitions		1,000,000
Dec 2025 Supplemental Request Total	\$2,958,457.00	
Jan 2026 Supplemental Request Total		\$7,266,543.00



KING COUNTY FLOOD CONTROL DISTRICT

King County Courthouse
516 Third Avenue
Room 1200
Seattle, WA 98104

Signature Report

FCD Resolution

Proposed No. FCD2026-01.1

Sponsors

1 A RESOLUTION of the Board of Supervisors of the King
2 County Flood Control Zone District, amending the rules
3 and operating procedures for the District, Resolution
4 FCD2025-01, Attachment A, as amended.

5 WHEREAS, the board of supervisors of the King County Flood Control Zone
6 District desires to amend its rules and operating procedures to change the number of
7 members of the executive committee;

8 NOW, THEREFORE, BE IT RESOLVED BY THE BOARD OF
9 SUPERVISORS OF THE KING COUNTY FLOOD CONTROL ZONE DISTRICT:

10 SECTION 1. The rules and operating procedures of the King County Flood
11 Control Zone District, as amended by Attachment A to this resolution, which amends

- 12 Section 4.A. of the rules and operating procedures, are adopted.

KING COUNTY FLOOD CONTROL DISTRICT
KING COUNTY, WASHINGTON

Reagan Dunn, Chair

ATTEST:

Russell Pethel, Clerk of the District

Attachments: A. King County Flood Control Zone District Rules and Operating Procedures

**KING COUNTY FLOOD CONTROL ZONE DISTRICT
RULES AND OPERATING PROCEDURES**

Section 1. Purpose.

The purpose of this resolution is to establish rules and operating procedures for the King County Flood Control Zone District (the "District").

Section 2. Definitions.

A. "Advisory Committee" means the advisory committee for the King County Flood Control Zone District as established by King County Ordinance 15278.

B. "Board" means the Board of Supervisors of the King County Flood Control Zone District ("FCZD"), who as King County Councilmembers are ex officio members of the Board.

C. "Executive Committee" means the executive committee of the King County Flood Control Zone District, consisting of five members of the Board who are appointed by the chair of the Board.

D. "Legislation" means a "motion" or "resolution".

E. "Motion" means legislation that organizes and administers the Flood Control Zone District or that contains declarations of policy which do not have the force of law.

F. "Remote meeting" means a meeting by the Executive Committee or Board held through one or more means of remote communication that allows real-time verbal communication by the Supervisors and the ability for members of the public to listen to the proceedings in real-time, without a physical location for the meeting.

G. "Resolution" means legislation that has the force of law.

Section 3. Officers.

A. The chair of the Board shall be elected by the members of the Board. The chair of the Board may appoint another member of the Board to preside at a Board meeting.

B. The chair of the Board shall preside at Board meetings, sign resolutions and other documents on behalf of the Board and perform such other duties as are commonly associated with that office.

C. The vice-chair of the Board shall be elected by the members of the Board. The vice-chair shall act in the absence of the chair.

D. The chair and the vice-chair shall serve at the pleasure of the Board for a term of one year, unless decided otherwise by the Board and until successors are chosen.

Section 4. Executive Committee.

A. The Executive Committee shall consist of five members of the Board, elected by the members of the Board.

B. The Executive Committee members shall serve at the pleasure of the Board for a term of one year, unless decided otherwise by the Board and until successors are chosen.

C. On behalf of the Board, the Executive Committee may take the following actions and perform the following functions, in addition to those identified elsewhere in these rules:

1. Approve contracts for goods and services up to \$200,000;
2. Review and recommend capital projects to the Board;
3. Develop and approve staffing and personnel policies related to the administration of the District; and
4. Oversee and administer the daily administration of the District.

D. At the first meeting in the new calendar year, the Executive Committee shall elect a chair and vice-chair of the Committee, who shall serve for a term of one year and until their successors are elected.

E. The chair of the Executive Committee:

1. Shall preside at Committee meetings and perform such other duties as are commonly associated with that office, and
2. May approve contracts for goods and services that are up to \$20,000 in an amount and that are included in the District's budget and work program. After approval of such a contract, the agenda for the next Executive Committee meeting shall contain an agenda item for the contract and at the meeting the chair of the Executive Committee or designee shall give a report regarding the contract.

F. The Executive Committee shall reflect the geographic diversity of the District.

G. The vice-chair shall perform the duties of the chair in the chair's absence.

H. The chair or the vice-chair of the Executive Committee may be removed by simple majority vote of the total membership of the Committee. If the chair or vice-chair of the Committee is removed, the Committee shall elect a successor as provided herein.

I. If any decision of the Executive Committee is not unanimous, the decision shall be forwarded to the Board for final decision at the request of any member who voted against the decision.

Section 5. Advisory Committee.

A. The Advisory Committee shall consist of fifteen members, consisting of permanent seats and two-year seats, as follows:

1. Ten permanent seats shall be held by:

a. each mayor, or a council member alternate designated by the mayor, of the following cities: Tukwila, Auburn, Kent, Renton, Snoqualmie, North Bend, Carnation, Seattle and Bellevue; and

b. the King County executive;

2. Four two-year seats shall be held by either mayors or city council members, or mayor or council member alternates, as nominated by the Suburban Cities Association or its successor, from the remaining cities in King County to ensure the goal of diversity in the geographic location and size of jurisdictions on the advisory committee; and

3. One two-year seat shall be held by an individual chosen from lists of no more than three nominees submitted to the Board by each of the King County Unincorporated Area Councils, alternating between a resident of the urban unincorporated area and the rural unincorporated area; and

4. The members for two-year seats allocated to representatives of the Unincorporated Area Councils and the Suburban Cities Association or its successor shall be subject to confirmation by the Board.

B. The Advisory Committee shall review and recommend to the Board an annual work program and budget for the district, including capital improvement program projects and funding levels, subject to approval or approval and modification by the board of supervisors.

C. Each seat on the advisory committee shall have one vote, unless rules adopted by the Advisory Committee provide otherwise.

D. The Advisory Committee shall elect a chair of the Committee, whose term shall be of indefinite duration.

E. The chair of the Advisory Committee shall preside at Committee meetings and perform such other duties as are commonly associated with that office.

F. The Advisory Committee shall elect or remove a vice-chair in the same manner as the chair. The vice-chair's term shall be of indefinite duration. The vice-chair shall perform the duties of the chair in the chair's absence.

G. The chair of the Advisory Committee or the vice-chair may be removed by simple majority vote of the total membership of the Committee. If the chair or the vice-

chair of the Committee is removed, the Committee shall elect a successor as provided herein.

H. The Advisory Committee shall adopt other rules governing its operations, at or promptly after its first meeting.

Section 6. Meetings.

A. The regular meetings of the Board shall be held at 1:30 p.m. on the second Tuesday of each month. The regular location of Board meetings shall be the King County Council Chambers, 10th floor King County Courthouse, Seattle, Washington 98104.

B. The regular meetings of the Executive Committee shall be held at 1:30 p.m. on the first Wednesday of each month. The regular location of the Executive Committee meetings shall be the King County Council Chambers, 10th floor King County Courthouse, Seattle, Washington 98104.

C. Special meetings of the Board or Executive Committee may be called by their respective chairs or as provided in RCW 42.30.080.

D. The Board, the Executive Committee and the Advisory Committee shall comply with the Open Public Meetings Act, Chapter 42.30 RCW. Any member of the Board may attend a meeting of the Executive or Advisory Committees.

Section 7. Executive Committee and Board Action.

A. A quorum of the Board shall consist of five members. A quorum of the Executive Committee shall consist of three members of the Committee.

B. All actions of the Board or Executive Committee shall be by simple majority vote of those present. All actions of the Executive Committee shall be simple majority vote of those present; provided that if only two members of the Executive Committee are present, the Executive Committee may act by unanimous vote of the two members and written concurrence in that vote by a third member of the Executive Committee, which concurrence shall be filed with the Clerk of the Board by the close of the next business day after the vote.

C. Members of the Board and Executive Committee must be present to vote on a matter before the Board or Executive Committee, except as provided in subsections B and D of this section.

D. The clerk of the Board, in consultation with the chair, shall establish authentication and operating procedures, which must comply with all state and county

laws regarding open public meetings. Except as provided herein, all meetings of the Board or Executive Committee shall allow for physical attendance of the meeting by members of the public.

1. Members may participate and vote in meetings of the Executive Committee of which they are members and in meetings of the Board by telephone or other electronic means.

2. After the declaration of an emergency by King County, the State of Washington, or the federal government, the chair may issue a finding that the Board or Executive Committee cannot hold a meeting with members or the public attending in person with reasonable safety because of the emergency, and a determination that either: (1) a meeting will be held remotely without a physical location; or (2) a meeting will be held at a physical location with limited available area for the public. The chair shall submit the finding and associated determination to the full Board for ratification as soon as reasonably practicable. If the finding and determination are not ratified, the finding and determination shall be immediately vacated.

3. When participating by telephone or other electronic means, the member shall speak audibly so that the public can hear the discussion and voting process.

E. All actions of the Board or Executive Committee shall be recorded in the minutes, copies of which shall be distributed to each member of the Board or Committee.

Section 8. Board Resources.

A. The Board shall determine and provide for staff resources required to assist the Board and the Executive Committee in performing their duties.

B. Hiring and staffing decisions. The Executive Committee shall oversee employment-related issues for the Board in consultation with the Executive Director, as follows:

1. Prepare and adopt administrative and personnel-related policies (see Section 4.C. above).

2. Job descriptions, classifications, and an organizational chart of employees of the District shall be reviewed and recommended by the Executive Committee and authorized by motion of the Board.

3. The Executive Committee shall establish and be responsible for outreach, recruitment and hiring for the Executive Director, provided:

a. Hiring of the Executive Director shall be subject to appointment by motion of the Board; and

b. The Executive Director shall report to the Chair of the Board, and shall be accountable and responsive to the supervisors on the Board; and

c. The Executive Director is responsible for the efficient overall management and administration of the King County Flood Control District; and

d. The Executive Director is subject to the policies and procedures of the District; and

e. The Executive Committee shall annually evaluate the performance of the Executive Director, using a process established by the Executive Committee; and

f. The Executive Director is subject to disciplinary actions as determined by the Executive Committee. The Executive Director, if either suspended without pay or terminated, may appeal the decision to the Board. The appeal must be filed within ten calendar days of written notice of the suspension or termination being sent to the employee. An appeal is filed by delivering a notice of appeal to the clerk of the Board.

4. The Executive Director shall:

a. Consult with the Board chair and vice chair about the hiring decision before extending an offer of employment for Deputy Executive Director; and

b. Shall make hiring decisions for all positions that report to the Executive Director as they appear in the organization chart adopted by the Board.

Section 9. Electronic Signature Authorized.

A. Authorization. The Chair, Vice Chair, and Executive Director, or designees, are authorized to utilize electronic signatures, as defined at RCW 38.52.010, for the execution of records, except as indicated in this section. An electronic signature may be used with the same force and effect as a signature affixed by hand, subject to the limitations in this section and under state and federal law.

B. Definitions. Except where specifically defined in this section, all words in this section shall have the meaning commonly associated therewith.

1. Record. A record is defined as any paper, machine-readable material, completed form, or other document, regardless of physical format, made or received by the District in connection with the transaction of public business.

2. Electronic Signature. An electronic sound, symbol or process, attached to or logically associated with an electronic record, and executed or adopted by a person with the intent to sign the record.

C. Requirements for Use of Electronic Signature. Consistent with the Board's authorization, an electronic signature may be utilized in lieu of a handwritten signature, when the following requirements are met:

1. The electronic signature shall be in the form of either a digitized graphical image of a handwritten signature or a digital signature using a private user signing key and public validation key.

2. The electronic signature shall be accompanied on the record by the date and time of the signature, unless the electronic signature technology is self-auditing.

3. The identification and authentication of the signer shall be possible based on the e-signature;

4. The signer shall intend to sign;

5. The electronic signature shall be reliably associated with the record;

6. The signed record shall have integrity (e.g., legibility, no indication of alteration, secure and reliable storage process, access limited to authorized persons),

which shall be ensured by using an integrity control measure, including but not limited to encrypted transport protocols, message encryption, or multifactor authentication methods.

D. Restrictions on use of Electronic Signature. An electronic signature may be used on any record other than:

1. Promissory notes;
2. Real property title documents;
3. Sureties and guarantees of payment from a third party;
4. Transactions which require a notarized signature, sworn signature, or witnessed signature; and
5. Any other record that shall not be executed by electronic signature pursuant to a federal, state or local law.

Section 10. Miscellaneous.

A. The rules of the Metropolitan King County Council as contained in K.C.C. chapter 1.24 or, where those rules are silent, the rules contained in the 2000 edition of Robert's Rules of Order Newly Revised 10th edition shall govern the Board and Executive Committee in all cases in which they are reasonably applicable and not inconsistent with this resolution.

B. The Board may revise these rules and operating procedures at any regular or special meeting by majority vote.

ADOPTED by the King County Flood Control Zone District on the 10th day of February, 2026.

Chair of the Board

ATTEST:

Clerk of the District



KING COUNTY FLOOD CONTROL DISTRICT

King County Courthouse
516 Third Avenue
Room 1200
Seattle, WA 98104

Signature Report

FCD Motion

Proposed No. FCD26-01.1

Sponsors

1 A MOTION relating to the organization of the King
2 County Flood Control Zone District Board of Supervisors.

3 WHEREAS, the King County Flood Control Zone District ("District") has
4 specified by motion the chair, vice-chair, members of the executive committee, and the
5 chair and vice-chair of the executive committee, and provided for any changes to these
6 positions to be made by adoption of a formal legislative Motion;

7 NOW, THEREFORE, BE IT MOVED BY THE BOARD OF SUPERVISORS
8 OF THE KING COUNTY FLOOD CONTROL ZONE DISTRICT:

9 SECTION 1. Beginning February 10, 2026, and until a successor is elected, the
10 board elects Supervisor Reagan Dunn as District chair and Supervisor Sarah Perry as
11 District vice-chair.

12 SECTION 2. Beginning February 10, 2026, and until a successor is elected, the
13 board designates the following supervisors as members of the District executive
14 committee:

15 Supervisors: Reagan Dunn, Sarah Perry, Steffanie Fain, Rhonda Lewis, and Pete
16 von Reichbauer.

17 SECTION 3. Beginning February 10, 2026, and until the District executive
18 committee elects a successor, the board designates Supervisor Reagan Dunn as District
19 executive committee chair and Supervisor Sarah Perry as District executive committee

- 20 vice-chair. The Board waives Section 4, Subsection D, of the Rules and Operating
21 Procedures for the purposes of these appointments only.

KING COUNTY FLOOD CONTROL DISTRICT
KING COUNTY, WASHINGTON

Reagan Dunn, Chair

ATTEST:

Russell Pethel, Clerk of the District

Attachments: None