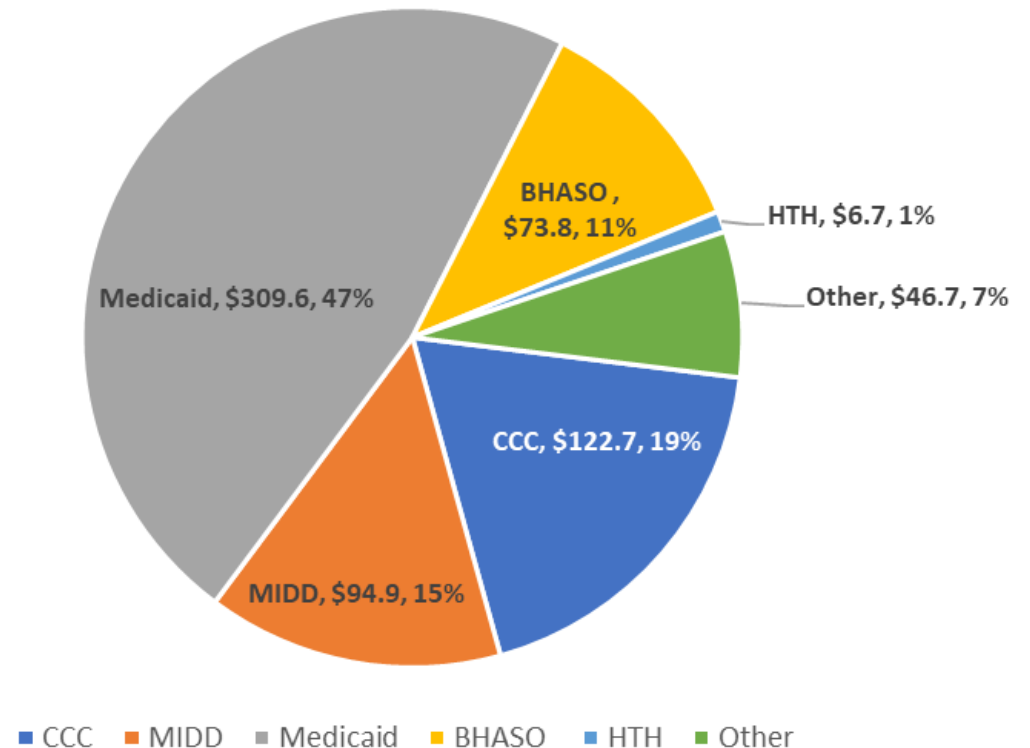


MIDD Update

Health, Housing, and Human Services Committee – July 1st, 2025

The MIDD Behavioral Health Sales Tax makes behavioral health treatment more **available, accessible, and effective** for King County residents

- Countywide 0.1% sales tax
- MIDD started in 2008, MIDD 2 in 2017
- **Infuses ~\$97 million/yr** into King County community behavioral health
- MIDD generates 15% of King County Behavioral Health revenue
- Complements insufficient federal and state investments
- Authorized by [RCW 82.14.460](#)



MIDD 2 Policy Goals

1. Divert individuals from jail, emergency rooms, and hospitals.

2. Reduce behavioral health crisis events.

3. Increase culturally appropriate, trauma-informed behavioral health services.

4. Improve health and wellness of individuals.

5. Explicit linkage with, and furthering the work of, King County initiatives.

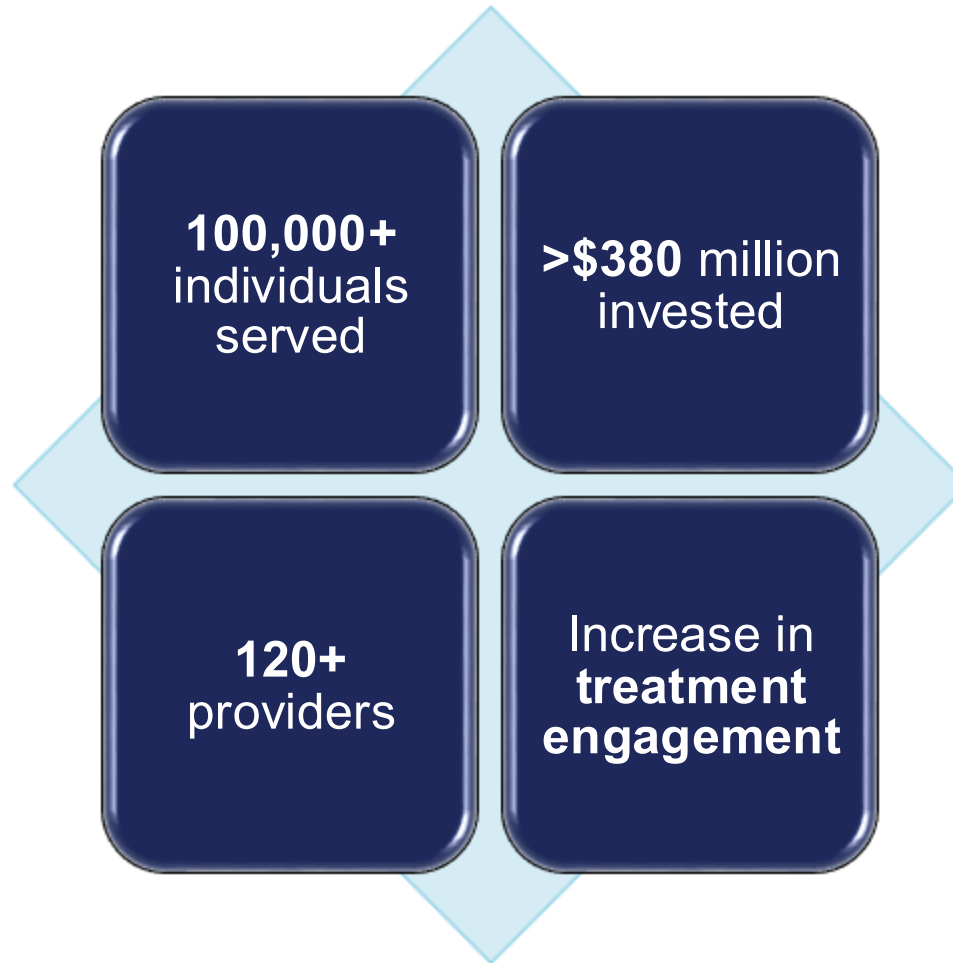
MIDD Advisory Committee

- Advises the County Executive and Council, ensuring transparent, accountable, collaborative, and effective implementation and evaluation of strategies and programs funded by the MIDD sales tax revenue.
- 37 seats representing a broad cross-section: judiciary, law enforcement, public health, behavioral health, community organizations, cities, hospitals, managed care, advocacy groups, labor, philanthropy, and grassroots/culturally specific providers.

Specifically, the roles is to:

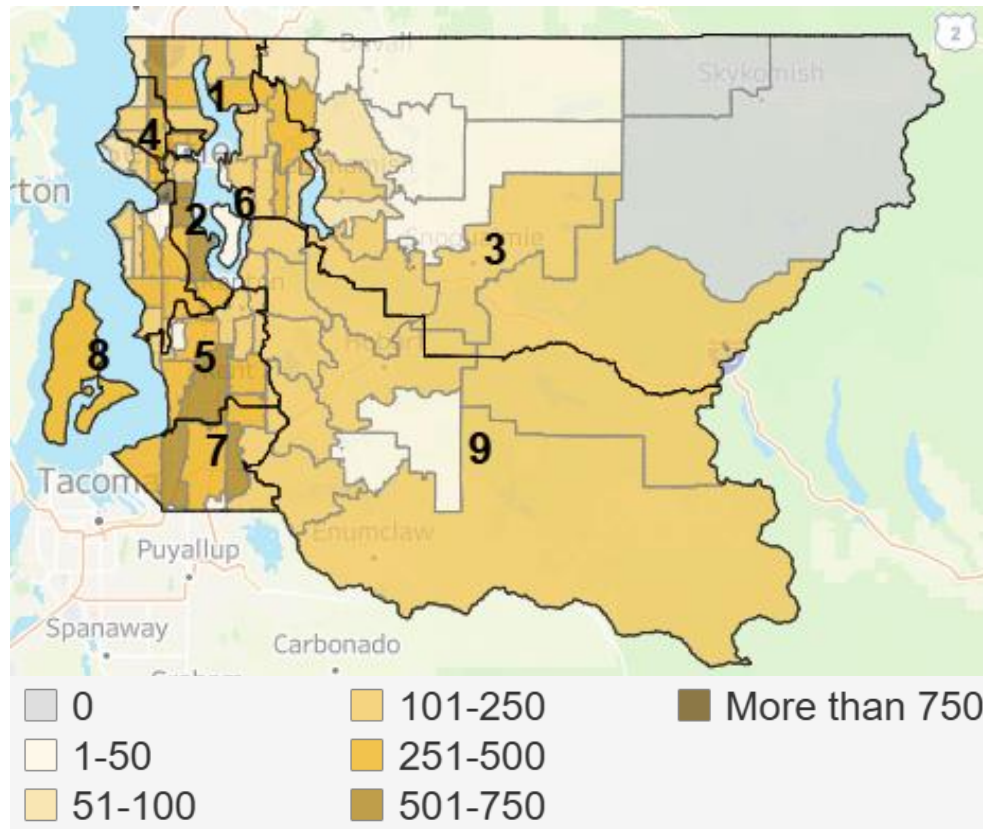
- Provide recommendations on the effective implementation of the county's sales tax funded programs
- Review and report to the executive and council on annual evaluation reports
- Review and comment on emerging and evolving priorities for the use of sales tax revenue
- Serve as a forum to promote coordination and collaboration between entities involved with sales tax programs

MIDD's Reach (2016 – 2024)

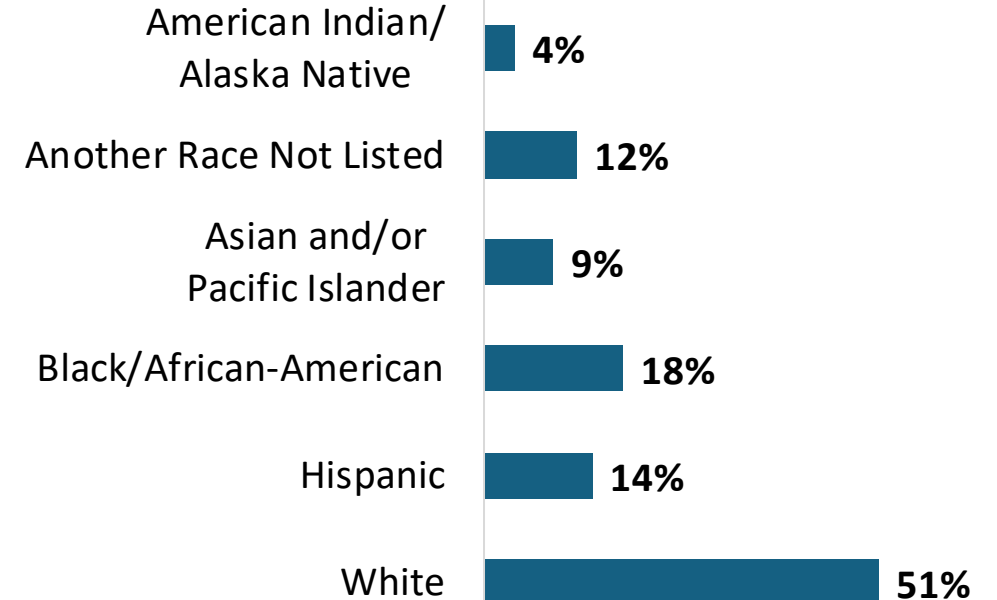


MIDD serves All of King County

Current Residence of MIDD Participants (2024),
by Council District



Race/Ethnicity, Individuals Served
(MIDD 2017-2023)



King County residents served by MIDD programs Use Costly Systems Less



MIDD initiatives provide Access to mental health and substance use Treatment

Through MIDD, **every year...**

- Over **3,500 individuals** with low income, but not eligible in Medicaid, receive outpatient mental health and substance use treatment.
- Over **900 children**, youth, and their families whose living situation may be at imminent risk receive an immediate crisis response.
- Nearly **1,000 people** with substance use disorder are connected to peer specialists who support their recovery.

MIDD participants Stay Engaged in ongoing treatment and services.

Among over 21,000 participants in MIDD programs with the expressed goal of linking individuals to treatment, nearly **two-thirds continued or newly engaged in publicly-funded behavioral health treatment and services** after enrolling in a MIDD program.

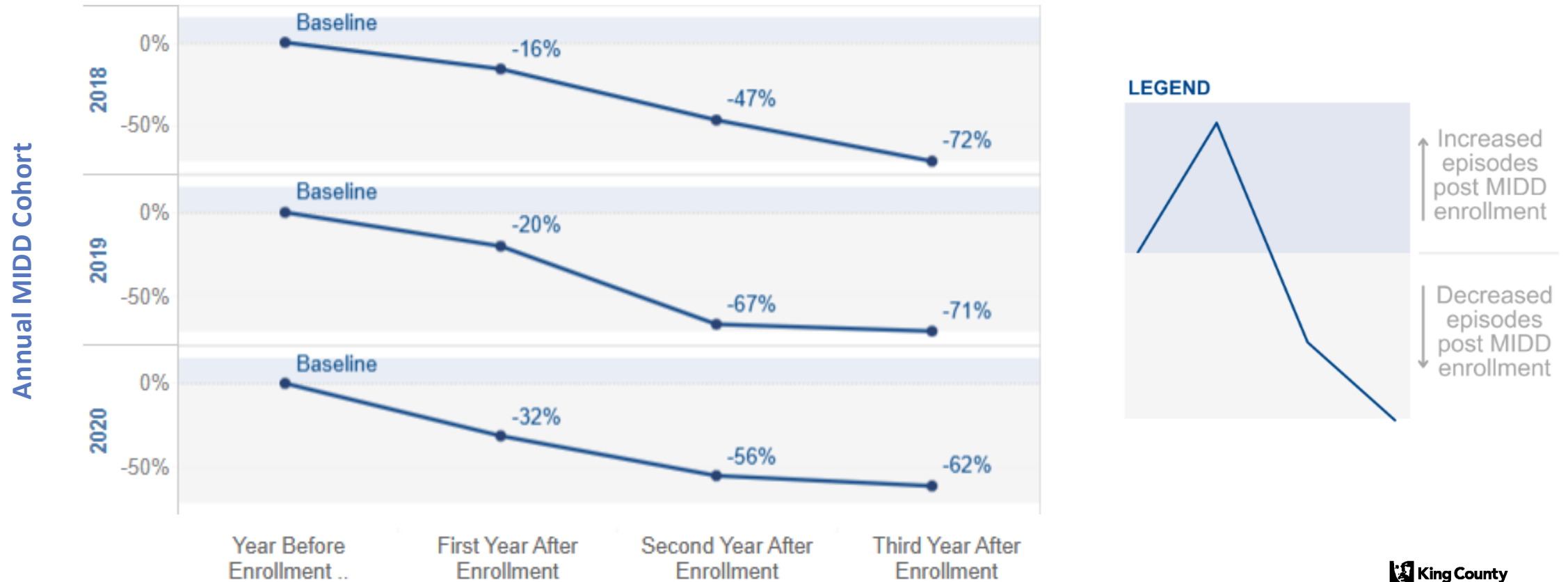
MIDD initiatives Connect people to timely behavioral health Care

Through MIDD, **every year...**

- LEAD diverts over **700 individuals** from the criminal-legal system to community-based services.
- More than **850 people** experiencing a behavioral health crisis receive a next-day appointment with a clinician.
- SBIRT screens and refers over **2,100 people** in emergency rooms for behavioral health services.

MIDD shows Consistent Outcomes Over Time

King County Jail Bookings, Long-Term Trends among Cohorts of MIDD Participants



MIDD Sales Tax Timeline

- The current MIDD Sales Tax expires on 1/1/2026
- The Executive intends to transmit a proposed Ordinance to renew the MIDD Sales Tax on July 10th, 2025
- Final action is needed by October 18th to avoid lapse in collections



Department of Community
and Human Services



Instagram



Blog



YouTube



Website



Data Dashboard