

Sliver by the River Proviso LSLU Briefing

JUNE 18, 2025

KRISTA CAMENZIND, DEPUTY DIRECTOR, WATER AND LAND RESOURCES DIVISION

Caveat

Exploration of the issues raised in the Proviso are ongoing.

Information in this presentation is draft and may change in the final report sent in September.

Report Components



Background description of Sliver by the River demographics & flooding;



Possible actions to address flooding in the Sliver by the River, including cost, implementation timelines, and outside funding options; and



The County's plans for community engagement.

Agencies Involved in Preparing Report

King County

- ☐ DNRP - Water and Land Resources Division
- ☐ DNRP - Wastewater Treatment Division
- ☐ Department of Local Services Director's Office
- ☐ DLS - Road Services Division
- ☐ DES - Office of Emergency Management
- ☐ Executive's Office - Office of Climate
- ☐ Executive's Office - Performance, Strategy, and Budget
- ☐ Public Health – Environmental Health Division

Other Governments Consulted

- ☐ Flood Control District
- ☐ Seattle Public Utilities



SOUTH PARK BRIDGE

Sliver Description

- ❑ 14-acre area along Duwamish River;
- ❑ Home to approximately 100 people in 40 housing units, including single family homes and multi-family units;
- ❑ Effectively part of South Park neighborhood;
- ❑ Racially and culturally diverse – 70% BIPOC;
- ❑ Low income – median household income in South Park 27% less than in all of Seattle.

Seattle Public Utilities Flood Preparations

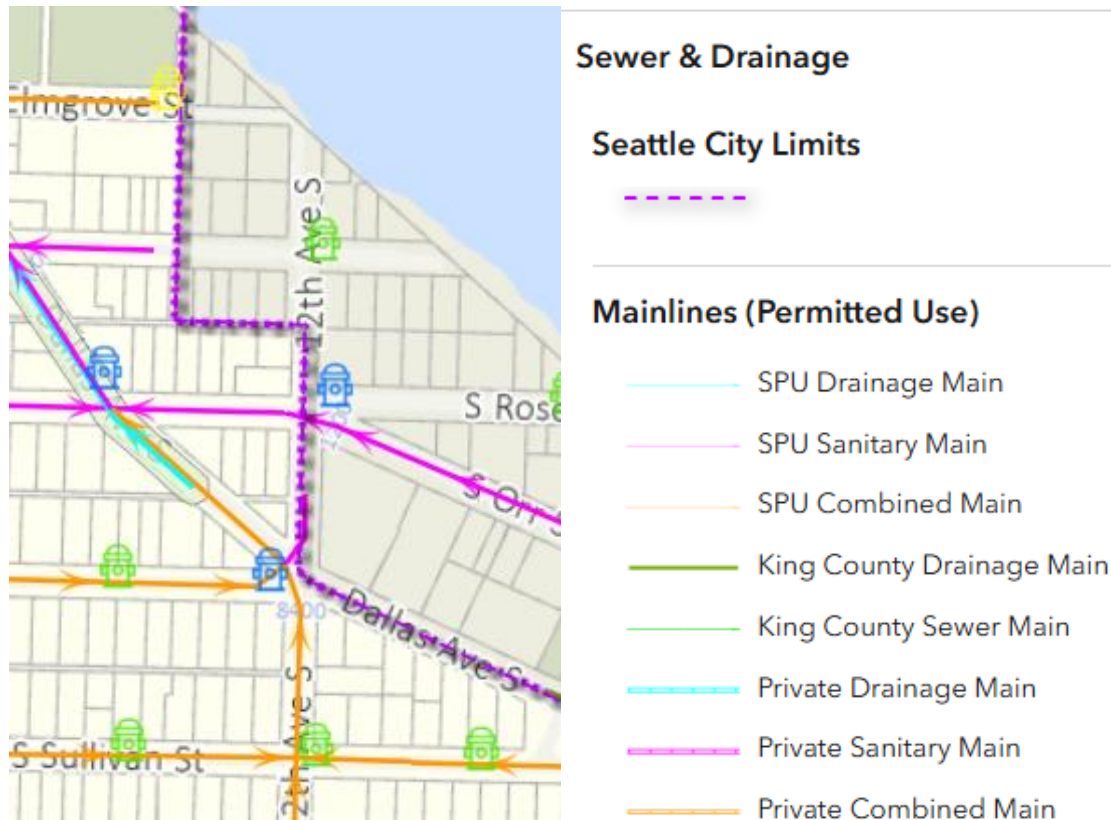
SPU FLOOD RESPONSE & PREP

- ❑ Seasonal sandbag wall in South Park and Sliver
- ❑ Installation of grinder pumps to prevent sewer backups, in partnership with WTD
- ❑ South Park Pump Station for sewer and stormwater
- ❑ Roadway and drainage improvements in South Park
- ❑ South Park Rapid Response Plan
- ❑ Ongoing community engagement
- ❑ Long-term sea level adaptation planning along the Duwamish River

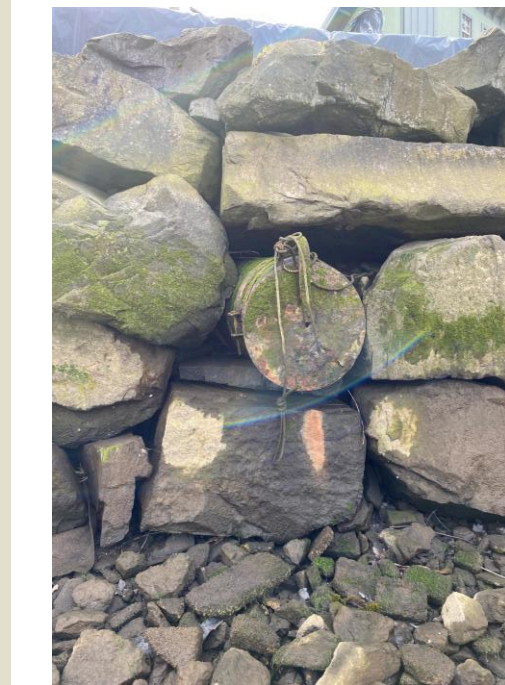
SEASONAL SANDBAG WALL IN THE SLIVER



Possible Actions – Sewer Conversion



- ❑ 21 on-site septic systems
 - ❑ 85% are 60 years old or older.
- ❑ On-site septic vulnerable to climate change, such as flooding and rising groundwater.
- ❑ Estimated \$84k-\$124k for each property owner to convert to sewer.
- ❑ No public funding currently available.
- ❑ Research into possible grants or other funding strategies ongoing.



Possible Actions – Drainage & Infrastructure

- ❑ Road Services Division.
- ❑ Tide valve at South Southern outfall failed to close in December 2022 flooding, allowing river water to flow into the stormwater drainage system.
- ❑ Preliminary estimate for replacement is \$80k
- ❑ Replacement in the next 12 to 18 months using existing Roads' budget, unless design phase indicates other concerns.

- ❑ Only cities have authority to annex.
- ❑ Sliver part of North Highline Potential Annexation Area.
- ❑ 2015 Seattle received approval to annex the “Duwamish Annexation” area, which includes the Sliver and Triangle.
- ❑ Sliver could be annexed independently.
- ❑ County continues to engage with Seattle occasionally.
- ❑ Last formal discussions in 2015.



Possible Actions – Home Buyouts

- ❑ Flood Control District funding source for home buyouts in King County. When the FCD purchases property, it goes into the County inventory and the FCD funds maintenance.
- ❑ FEMA grant program administered through State. King County has not accessed since creation of FCD.
- ❑ Home buyouts require willing sellers.
- ❑ Homes typically demolished.
- ❑ Can be attractive sites for nuisance activities and require resources to manage.

Community Engagement Plan

- ❑ DLS will lead community engagement for the County.
- ❑ A DLS Community Service Area (CSA) Liaison has been assigned to the Sliver.
- ❑ Starting summer 2025, the CSA Liaison will be available to community at:
 - ❑ Community office hours bi-monthly to start, then monthly,
 - ❑ Monthly SPU community meetings, as scheduled,
 - ❑ Meetings with South Park Community groups twice per year,
 - ❑ Community events, such as the Duwamish River Festival.
- ❑ DLS will collaborate with other County departments to share information on the breadth of County services with Sliver residents.

To Be Explored

- ☐ King County Flood Management Plan

- ☐ Reviewing for relevant actions.

- ☐ Policy or Code Updates

- ☐ None identified at this time.

- ☐ Intergovernmental Agreements

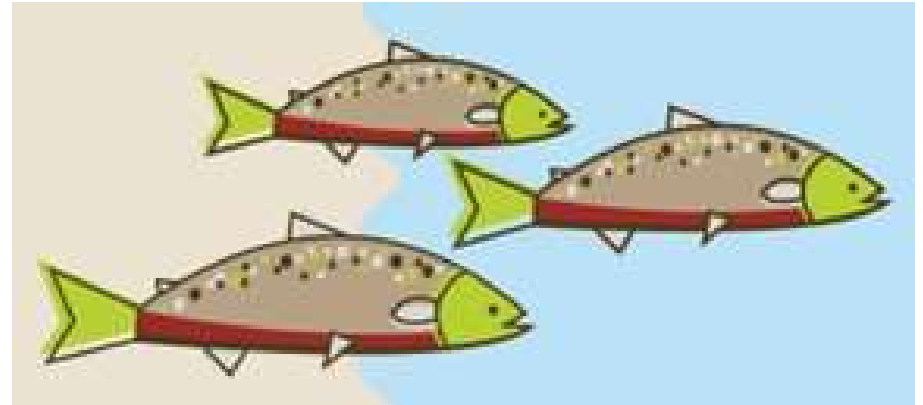
- ☐ None identified at this time.



Questions?

Fish Passage Restoration Program Strategic Plan

Local Services and Land Use
Committee Briefing
June 18, 2025



Evan Lewis

Fish Passage Restoration Program Manager

Water & Land Resources Division, Department of Natural Resources & Parks

Fish Passage Restoration Program Strategic Plan

Today's Focus:

Drivers for the Strategic Plan

Fish Passage Restoration Program Strategic Plan:

- Mission & Goals
- Program Success Metrics
- Program Strategies & Implementation Actions

Next Steps and Timeline



Watercress Creek at 432nd SE (2024 construction)

Strategic Plan Drivers

Summer 2018: Initiation of the Fish Passage Restoration Program.

2019-2024: Program Development & Implementation

March 2024: Final audit report by the King County Auditor

December 2024: King County Council adopted the 2024 Comprehensive Plan



Tuck Creek @ NE Woodinville-Duvall Rd
(2023 Construction)

Mission and Goals

Program Mission Statement:

- Connecting Salmon to their Historic Habitat

Clarified Goals:

- Accelerate benefits for salmon by restoring fish passage
- Streamline fish passage projects from conception through successful completion.
- Partner to increase fish passage restoration throughout King County.



Unnamed tributary to Cedar River at SR169 (2021 construction)

Strategies & Implementation Actions

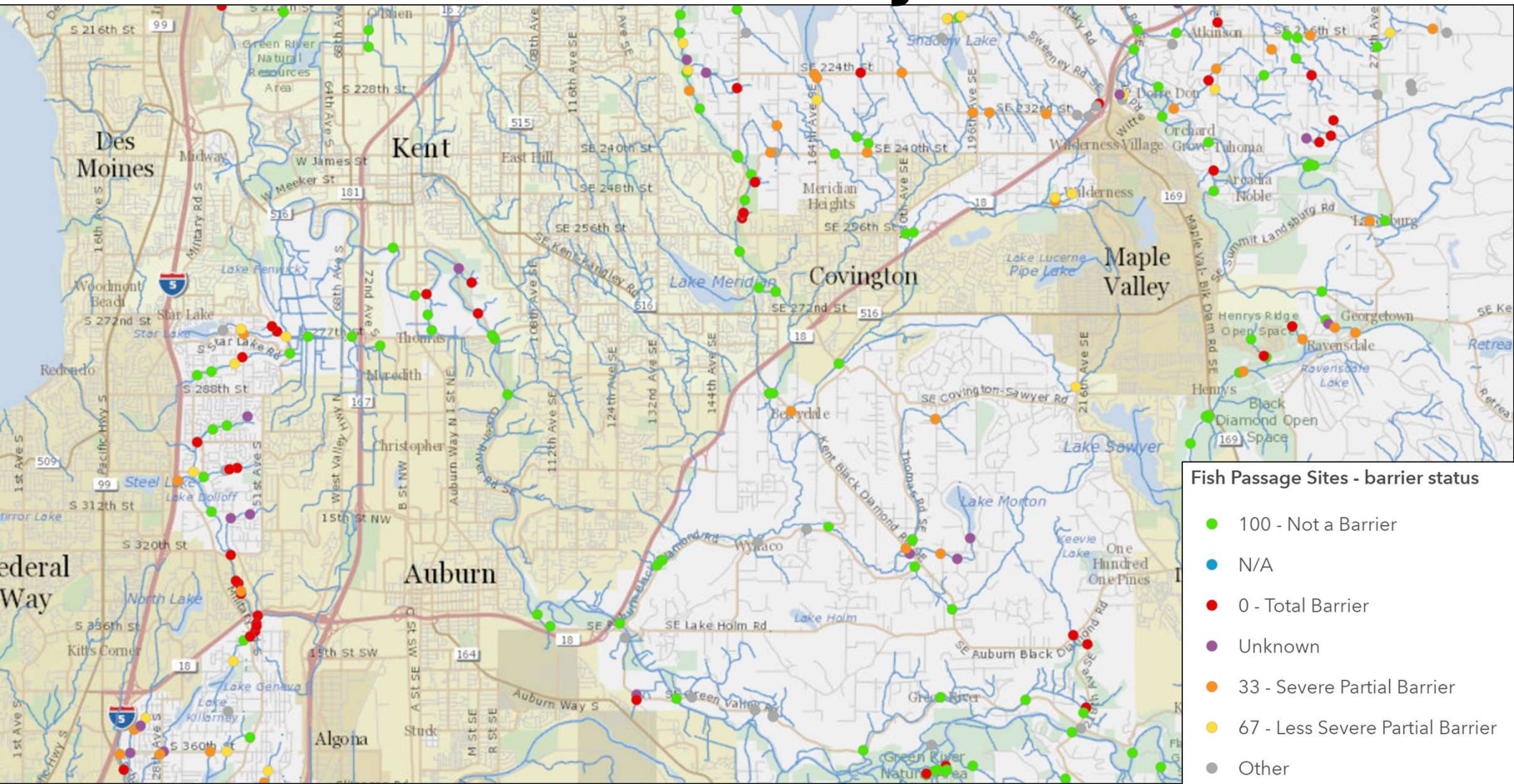
- Inventory & Prioritization
- Program Procedures
- Capital Project Delivery
- Partner Coordination
- Consultation, Outreach & Engagement



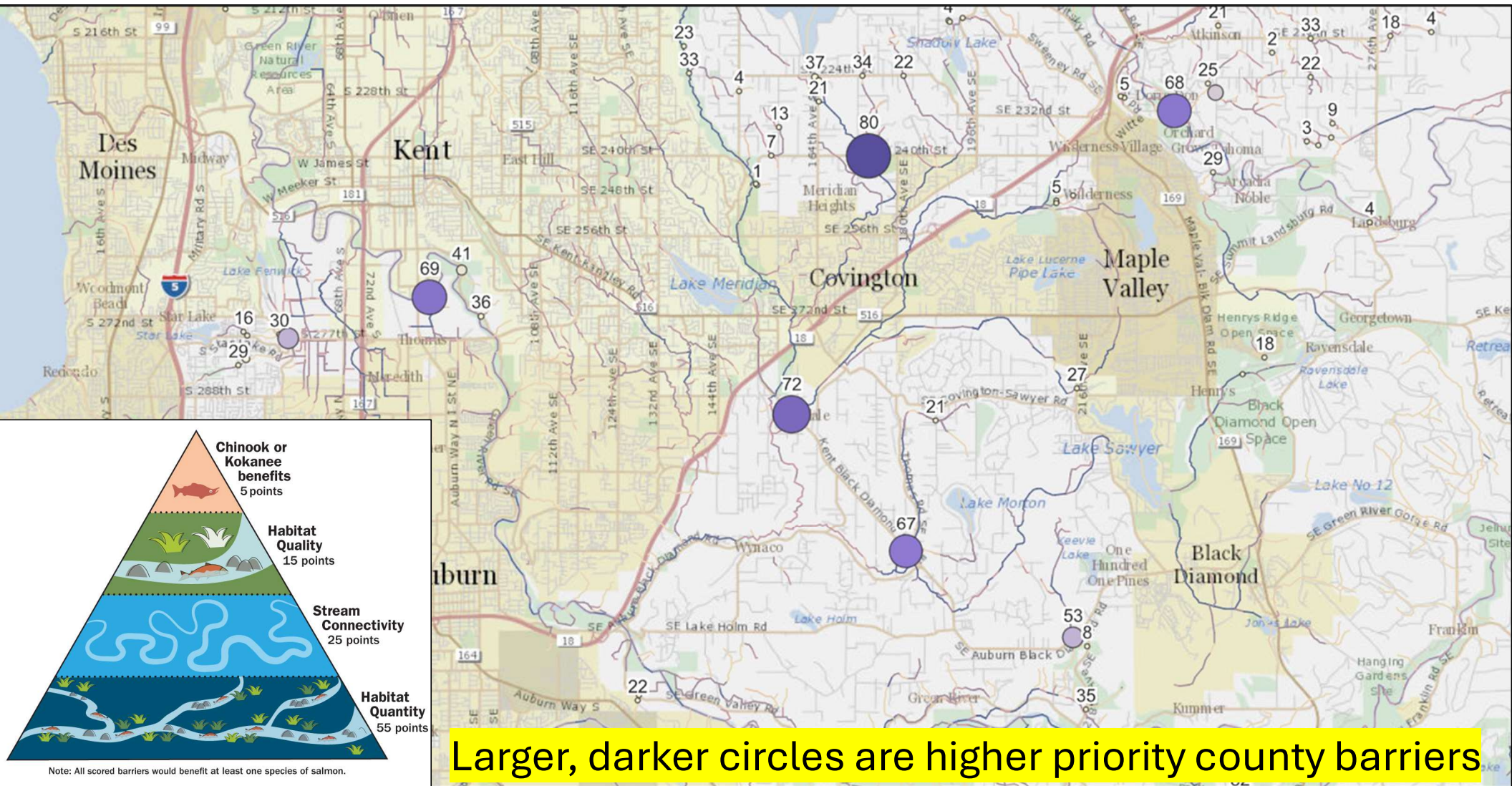
Mary Olsen Creek at Green River Rd.
(2020 construction)



Inventory



Prioritization

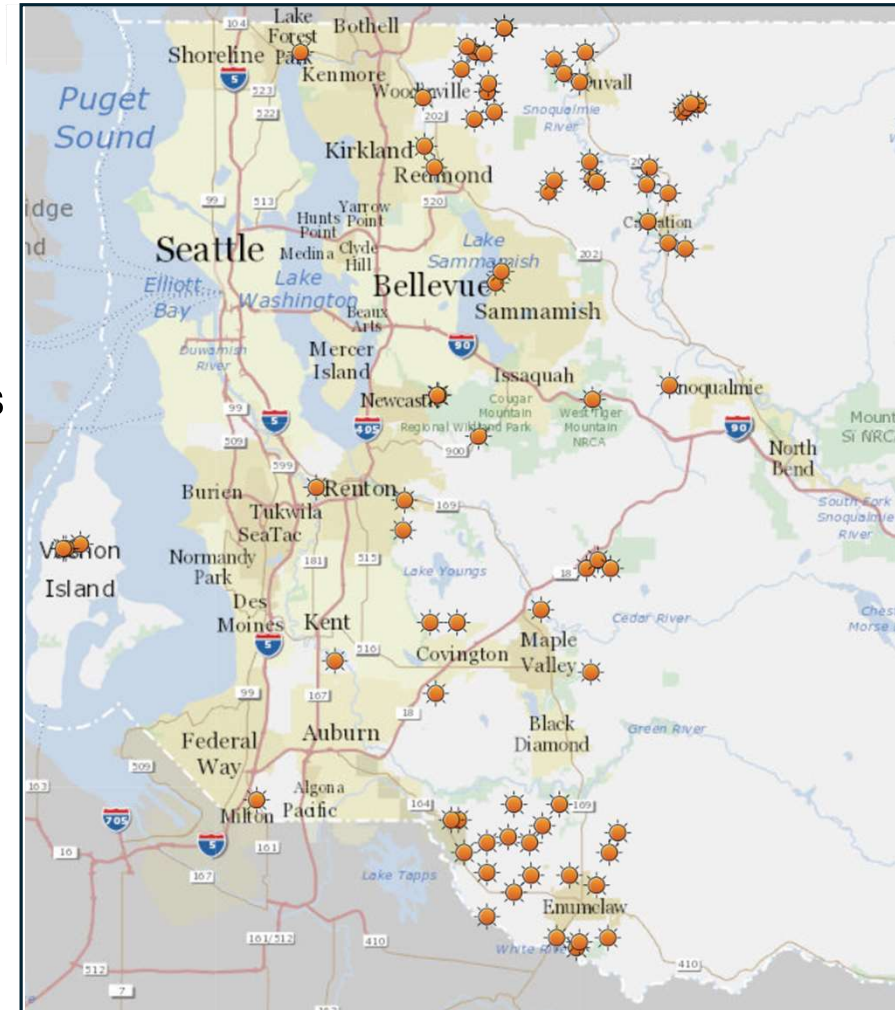


Capital Project Delivery

2023-2039 Fish Passage Work Plan

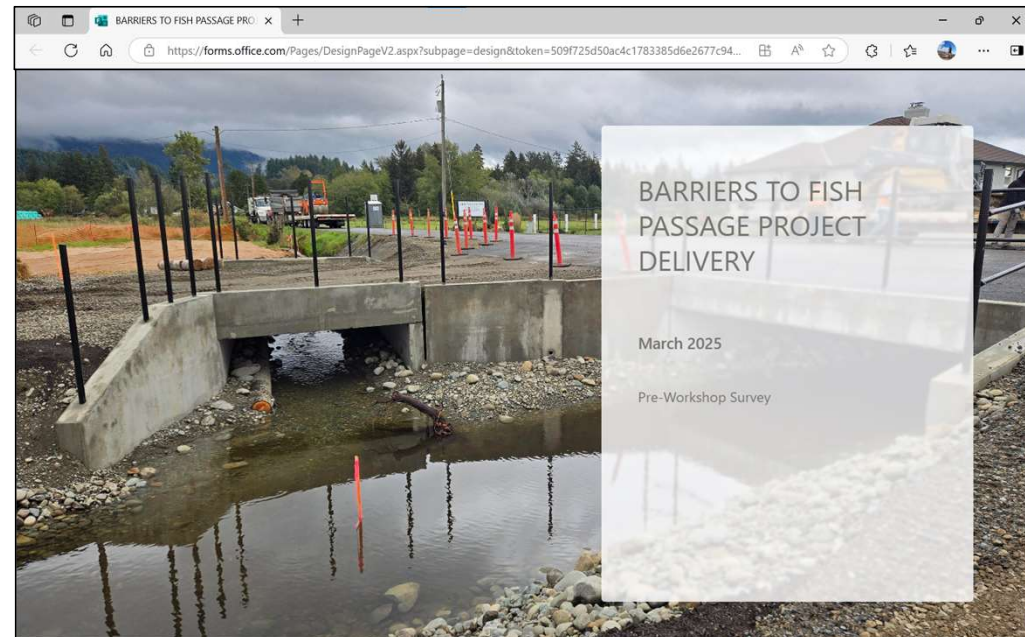
- Roads, Parks, WLRD lead projects.
- Will restore fish passage to at least half of the salmon habitat blocked by county-owned barriers as of 2020.
 - By 2039, complete **69 more** fish passage projects
- Work Plan includes habitat priority projects and pro-active infrastructure projects with fish passage.

*Without the inventory and prioritization, getting to 50% habitat gain would require completion of **500 projects!***



Program Procedures

- Streamline delivery of fish passage projects
- Develop and clarify standard approaches for common project elements:
 - Permitting,
 - Contracting and procurement,
 - Acquisition of real estate interests,
 - Engineering methods and practices, and
 - Priority transfer



Online survey to county fish passage staff to rate threats to delivery of fish passage capital projects (March 2025), in prep for Apr 2025 workshop.

Partner Coordination

Salmon don't care who owns a barrier. Strategic coordination to:

- Coordinate and accelerate work on multiple barriers on high priority streams,
- Ensure access to remedy the highest-priority passage barriers,
- Leverage available funding toward the most benefit,
- Share best practices, and
- Demonstrate how fish passage provides tangible benefits to salmon in the region.

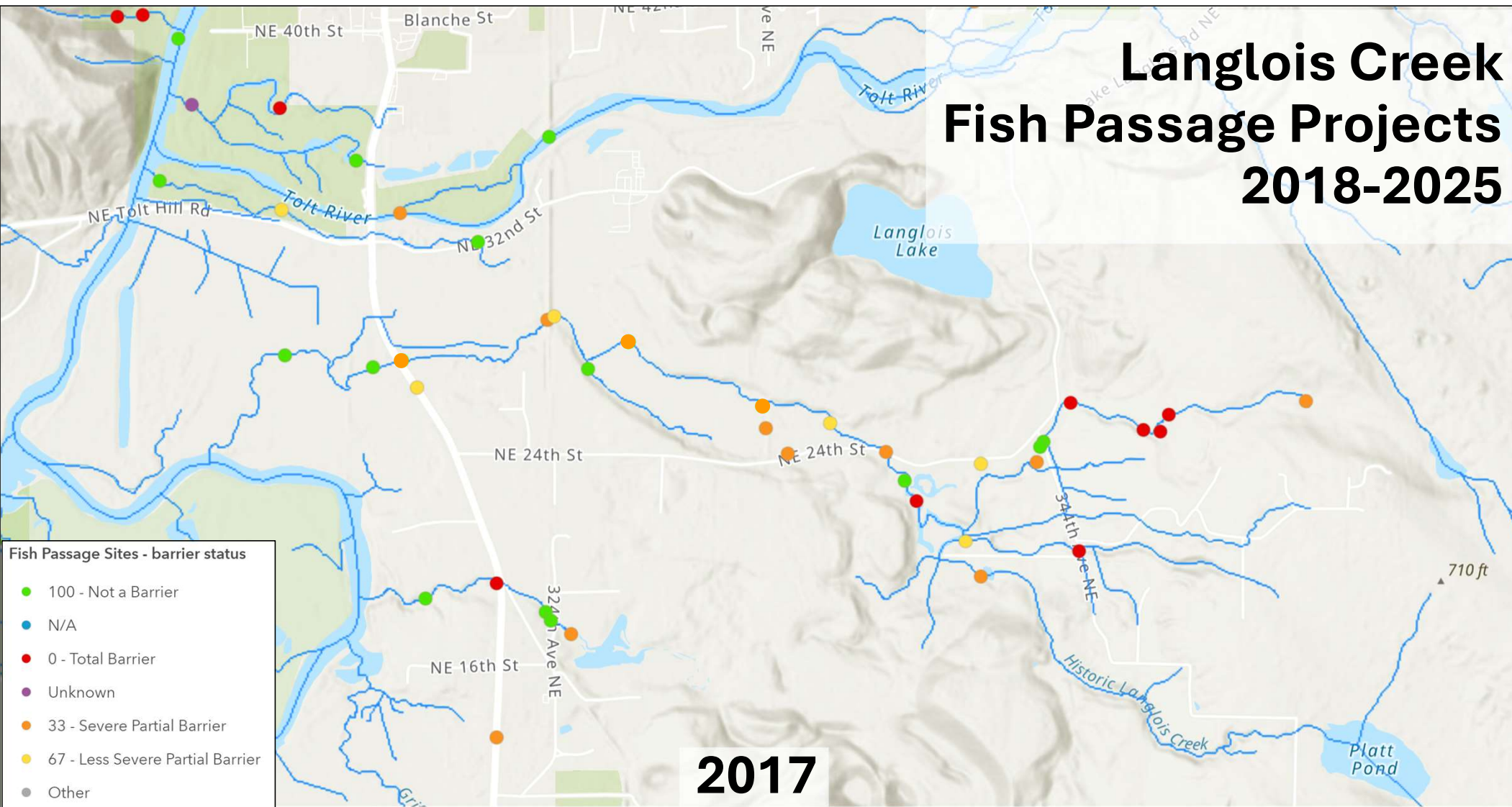


Ravensdale Creek at Green to Cedars Trail (2021/2022 construction)

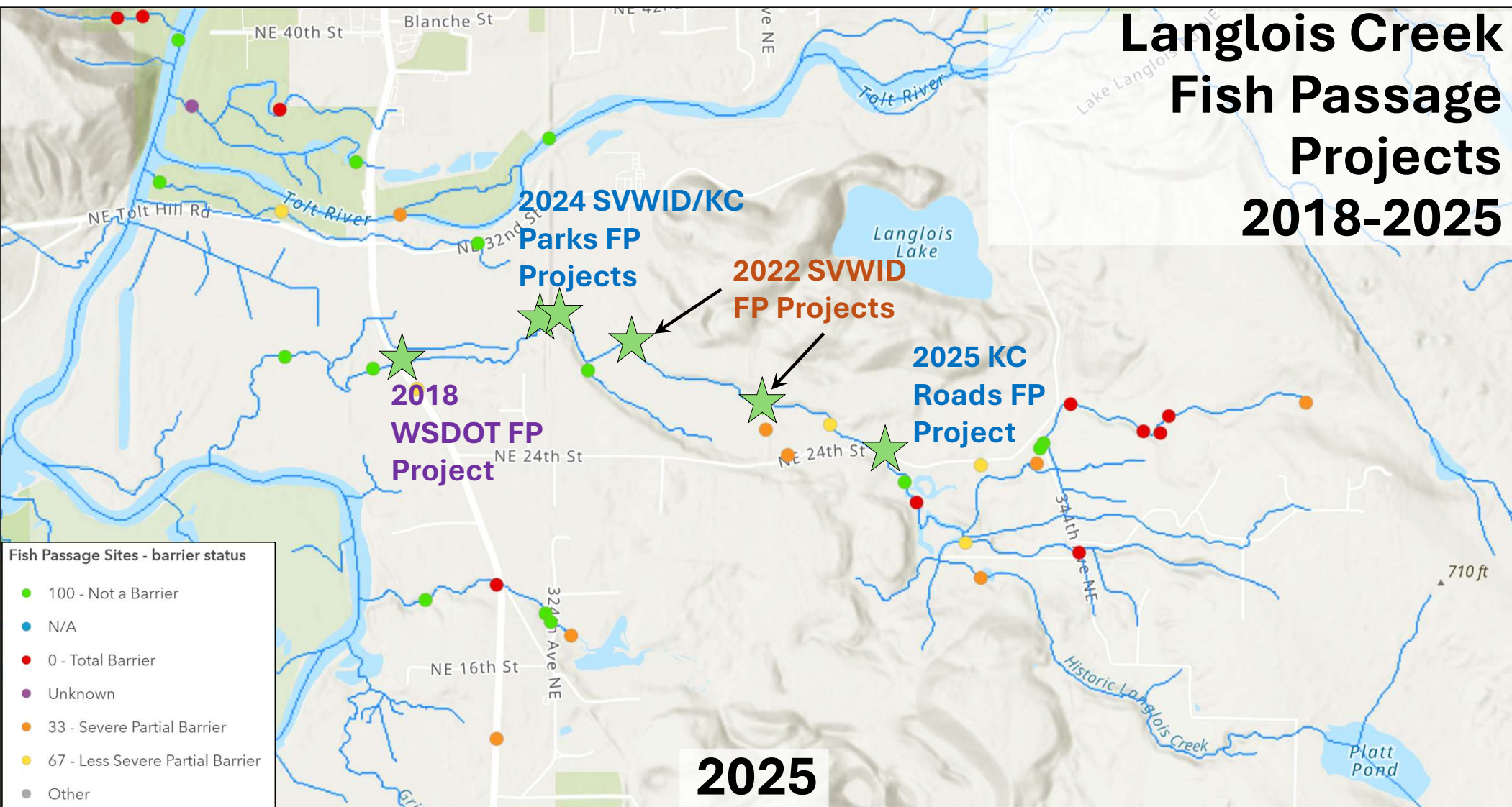


Langlois Creek at Snoqualmie Valley trail (2024 construction)

Langlois Creek Fish Passage Projects 2018-2025

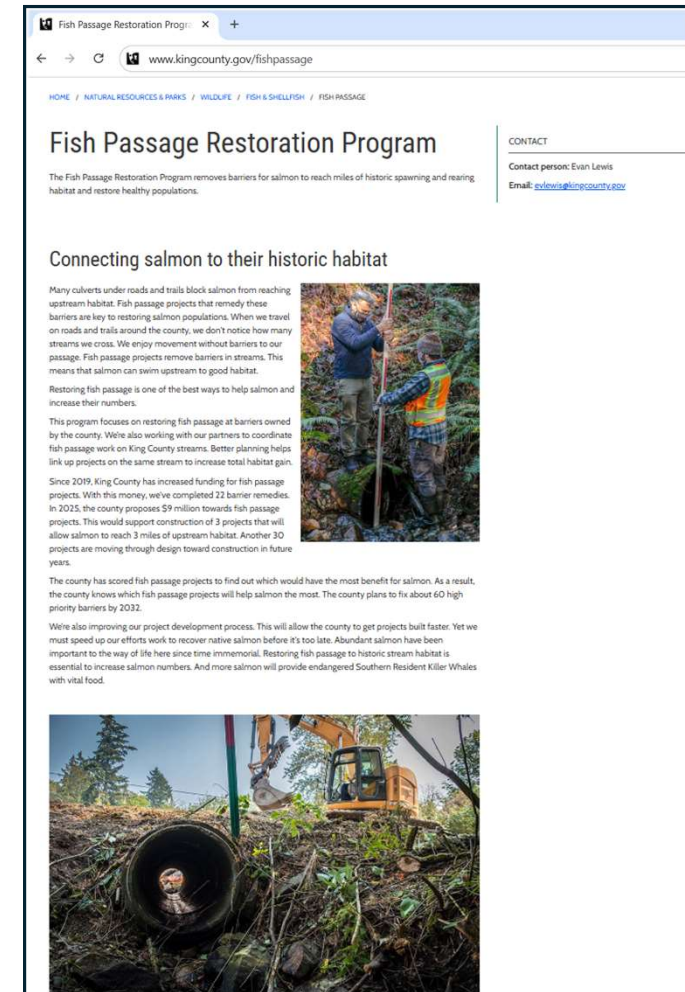


Langlois Creek Fish Passage Projects 2018-2025



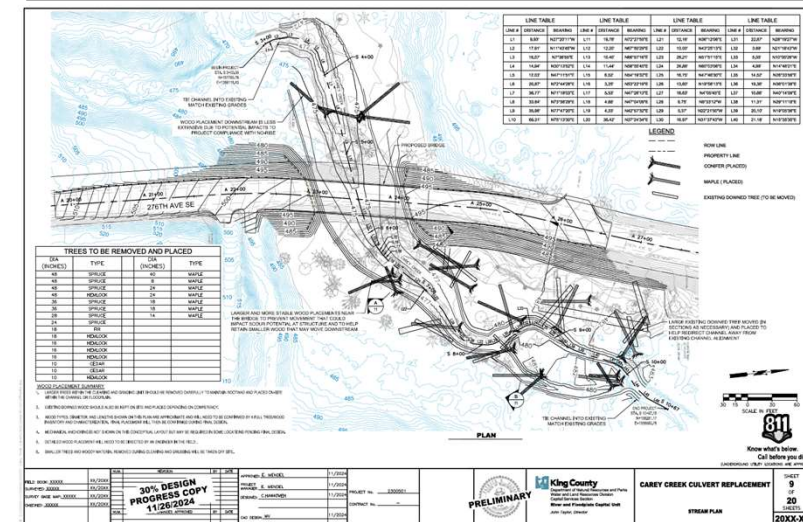
Consultation, Outreach & Engagement

- Updates to the Fish Passage Restoration Program website
 - www.kingcounty.gov/fishpassage
 - Coordinated w/ county fish passage project websites.
- Continued frequent and close coordination with non-profits, salmon recovery groups, local and state agencies.
- Consultation with tribal staff.
 - Cross-agency tribal collaboration protocols for the county fish passage program and projects.
- Outreach on funding
 - Work with grant specialists, legislative liaisons, and the Executive's office to engage grant programs and legislative staff for funding of important county fish passage projects.
 - Public-private partnership opportunities



Tribal Consultation


- Updated cross-agency tribal consultation protocols for the county fish passage program and projects.
 - Fish Passage Restoration Program
 - Tribal consensus with barrier prioritization method
 - Consultation on fish passage work plan project roster
 - Annual coordination meeting to review upcoming and active fish passage projects
 - Projects
 - Standard procedures guiding county consultation with tribes during planning, design, and implementation of fish passage projects.
 - Support letters from the Muckleshoot Tribe for several county grant applications.




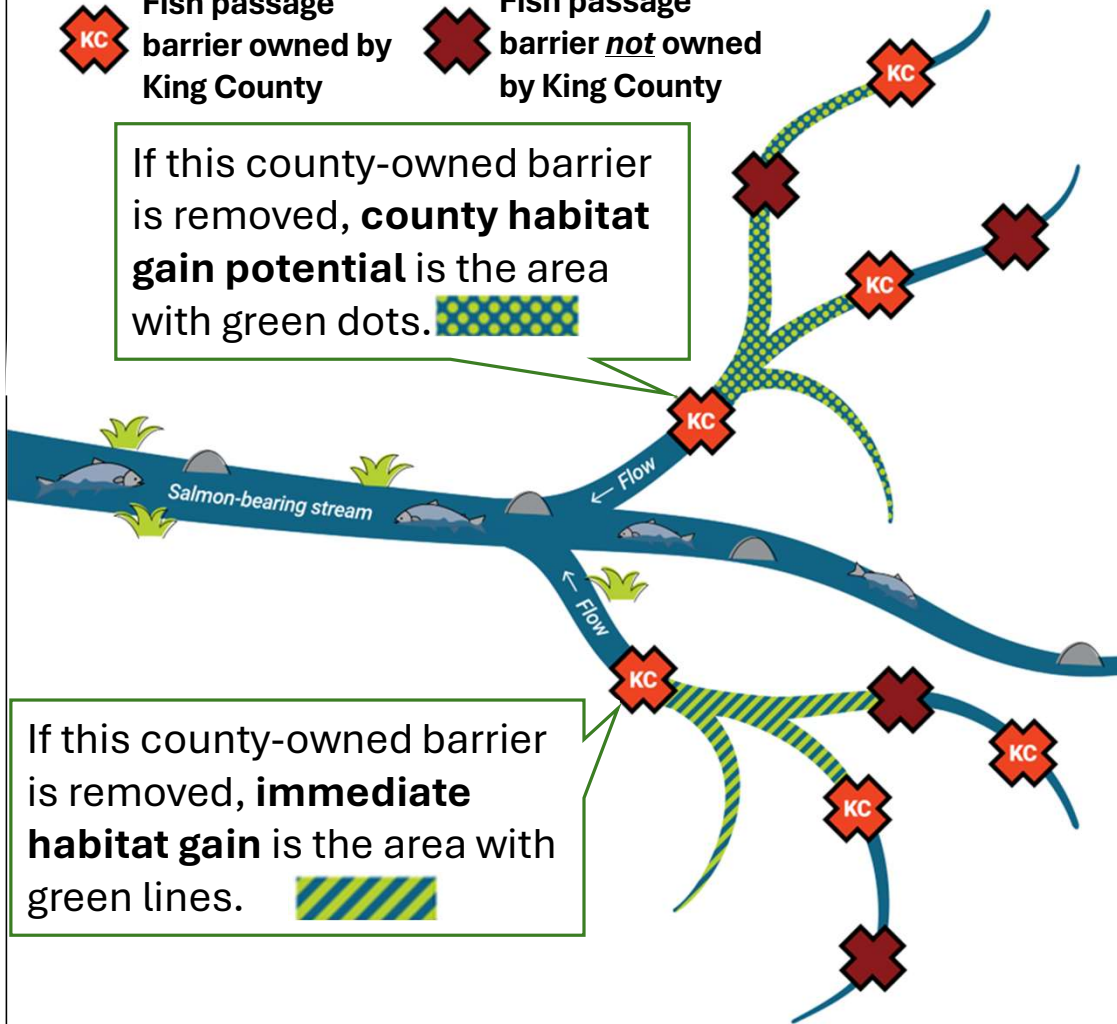
Carey Creek at 276th Ave SE
(2027 construction, pending grant funding)

County habitat gain potential vs. Immediate habitat gain

 Fish passage barrier owned by King County
 Fish passage barrier not owned by King County

If this county-owned barrier is removed, **county habitat gain potential** is the area with green dots. 

If this county-owned barrier is removed, **immediate habitat gain** is the area with green lines. 

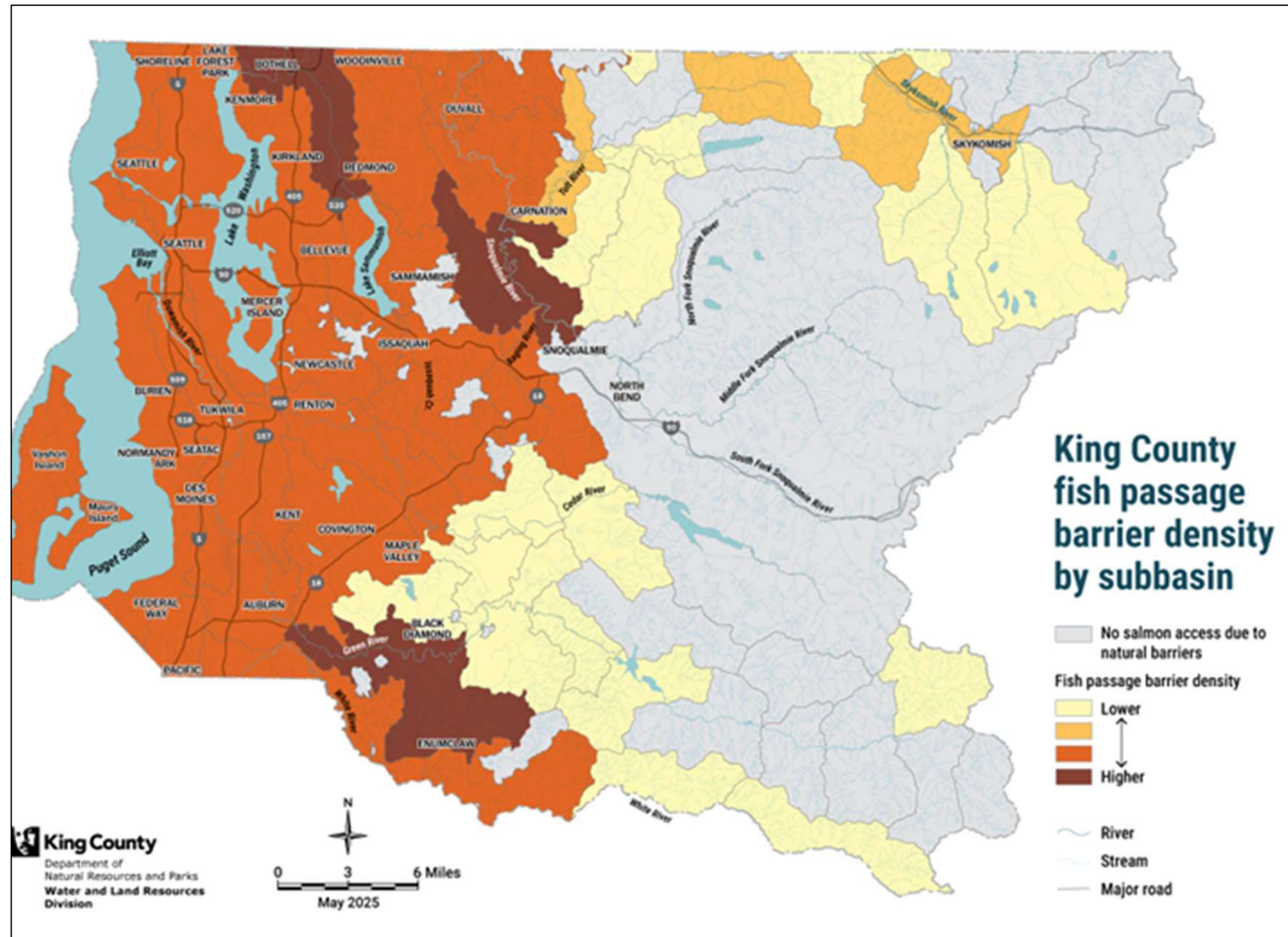


Success Metrics

- Upstream habitat gain
 - County Habitat Gain Potential
 - Distance and habitat quantity upstream to the next county barrier (or upper limit of salmon habitat)
2023-2039: **350 miles** of County Gain Potential
 - Immediate Habitat Gain
 - Distance and habitat quantity upstream to the next known barrier (or upper limit of salmon habitat)
2023-2039: **155 miles** of Immediate Gain

Success Metrics

- Subbasin Barrier Density
 - Track changes in barrier density numbers over time.



Funding and Financing

Estimated remaining cost for the 2023-2039 fish passage work plan is \$251 million

- WLRD, Roads, and Parks track expenditures, funding need, and grant opportunities.
- Dedicated local fish passage funding stream recommended for program sustainability.

Since 2019:

County funding (SWM and REET)	\$44M (supplemented by Parks levy, Roads operations)
Grants (local, state, federal)	<u>\$26M</u>
Average	\$10M/year

- Other potential funding sources:
 - Coordinated grant applications with partners;
 - Increasing state funding for county fish passage and transportation capital projects;
 - Direct state and federal funding for county fish passage projects.

Risk Assessment

THREAT	RISK	WAYS TO MITIGATE
Local flood permitting	H	County code revisions to support salmon recovery and floodplain management goals.
Property acquisition challenges	H	Pro-active, early outreach, clear messaging; adequate funding.
Contracting/Procurement	H	Process improvement, staff training, innovative procurement methods.
Staff capacity	M	Dedicated teams in Roads, Parks, and WLRD working on fish passage.
Insufficient funding/cost increases	M	Seek diverse and robust funding/financing plan.
Project delivery processes	M	Plan, do, check, act to improved processes and efficiency.

Strategic Plan: Next Steps & Timeline

Strategic Plan Review Process	Dates	Status
SME/Regional Planning review/revision	May 14 – Jun 13	Complete
Technical Editor Review/Revision	Jun 16 – 27	In progress
PAO Review/Revision	Jun 30 – Jul 18	Pending
Pre-review copy to Exec Office	Jul 21	Pending
Divisional Review/Revision	Jul 21 – Aug 8	Pending
Departmental Review/Revision (DNRP/DLS)	Aug 11 – 31	Pending
Exec Office Review/Revision	Sep 1 – 29	Pending
Due date to KC Council and Auditor	Sep 30	Pending

FISH PASSAGE RESTORATION PROGRAM



Questions?

