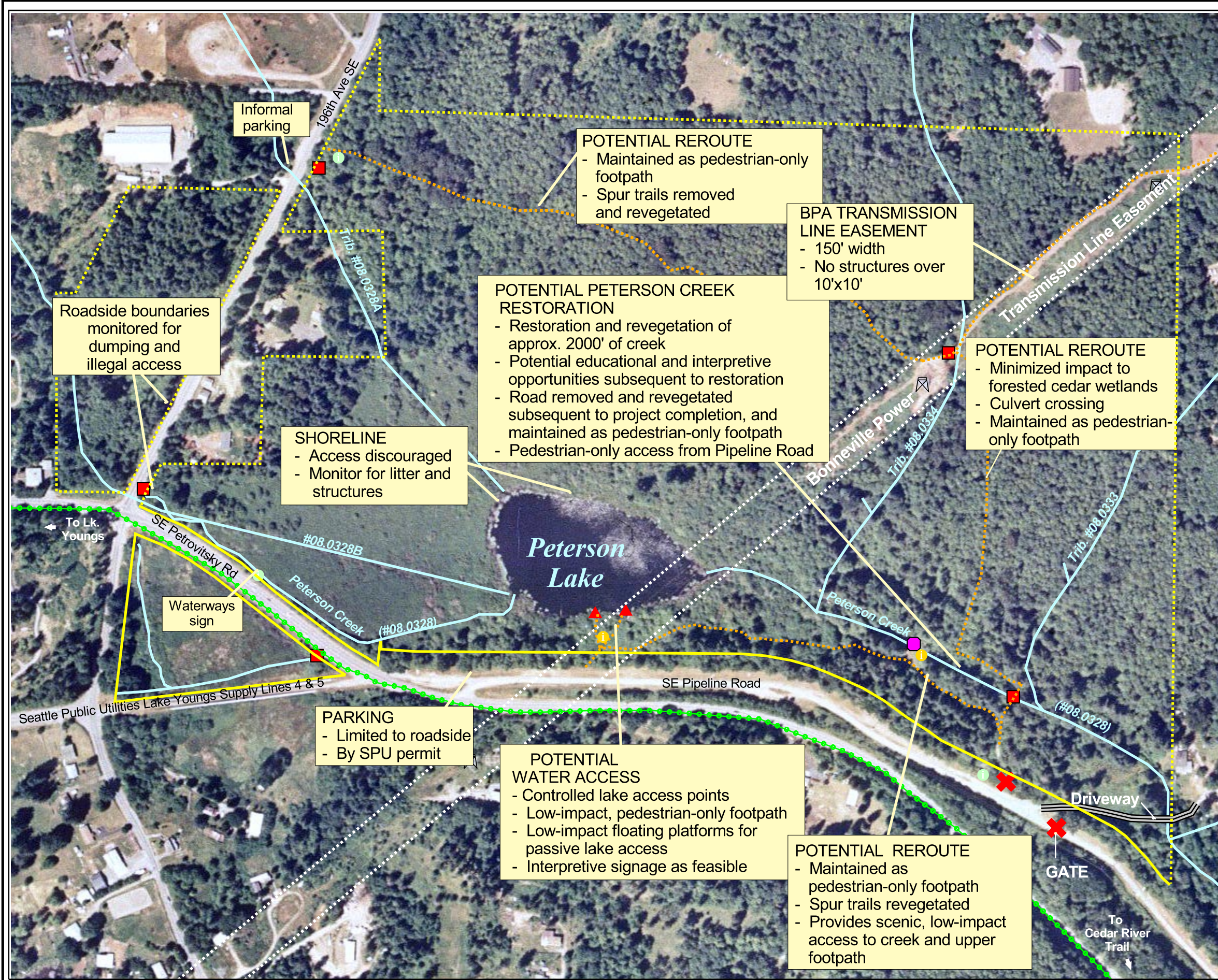


Figure 5

Peterson Lake Park Natural Area

Site Management



Legend:

● Identification	✖ Barriers
● Interpretive	■ Culvert
○ Trails	▲ Potential platform
	■ Weir

— Park boundary
- - - Park boundary posted
— Rivers, streams, tributaries
⊠ BPA towers
■ BPA Easement
- - - Proposed Regional Trail

North arrow and scale bar (0, 200, 400 Feet).
August 27, 1999



Linework and boundaries are approximate and should not be relied upon for matters requiring precise locations.

Map produced by the GIS staff of the King County GIS Technical Resource Center (TRC). TRC disclaims any warranty for use of this digital product beyond that for which it was designed. Neither this digital product, nor any portion thereof may be reproduced in any form or by any means without the expressed written authorization of TRC. Use is restricted.

Informal parking

POTENTIAL REROUTE
- Maintained as pedestrian-only footpath
- Spur trails removed and revegetated

BPA TRANSMISSION LINE EASEMENT
- 150' width
- No structures over 10'x10'

POTENTIAL PETERSON CREEK RESTORATION
- Restoration and revegetation of approx. 2000' of creek
- Potential educational and interpretive opportunities subsequent to restoration
- Road removed and revegetated subsequent to project completion, and maintained as pedestrian-only footpath
- Pedestrian-only access from Pipeline Road

POTENTIAL REROUTE
- Minimized impact to forested cedar wetlands
- Culvert crossing
- Maintained as pedestrian-only footpath

SHORELINE
- Access discouraged
- Monitor for litter and structures

Roadside boundaries monitored for dumping and illegal access

Waterways sign

PARKING
- Limited to roadside
- By SPU permit

POTENTIAL WATER ACCESS
- Controlled lake access points
- Low-impact, pedestrian-only footpath
- Low-impact floating platforms for passive lake access
- Interpretive signage as feasible

POTENTIAL REROUTE
- Maintained as pedestrian-only footpath
- Spur trails revegetated
- Provides scenic, low-impact access to creek and upper footpath

GATE

To Cedar River Trail