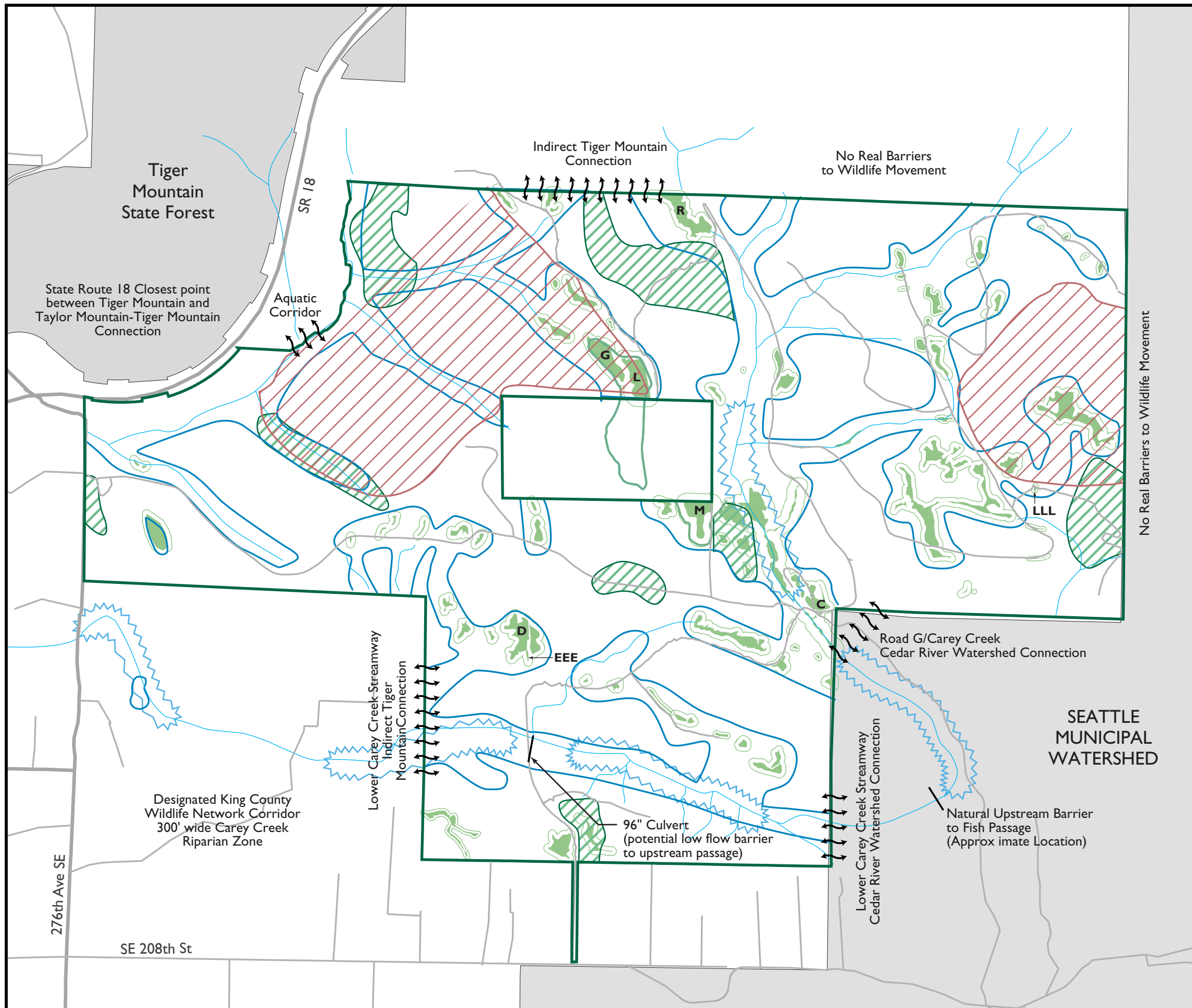


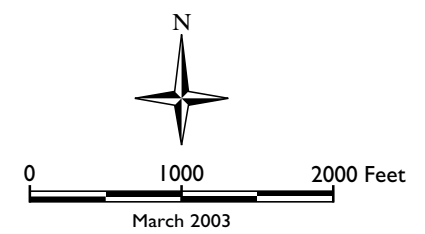
# TAYLOR MOUNTAIN FOREST

Figure 4

## Fish and Wildlife Habitat/ Sensitive Areas



- Salmonid Spawning Habitat (Salmon and Trout)
- Mature Conifer Forest
- Wildlife Habitat Connections
- High Quality Wetland
- Wetlands and Buffers
- Aquatic Zones
- Low Existing Road and Trail Density
- C, D, EEE, G, L, LLL, M, R** Wetlands Containing Amphibians/  
Amphibian Habitat (Partial survey Jones and Stokes)
- Streams
- Roads



  
**King County**  
 Department of  
 Natural Resources and Parks  
**Water and Land Resources Division**

The information included on this map has been compiled from a variety of sources and is subject to change without notice. King County makes no representations or warranties, express or implied, as to accuracy, completeness, timeliness, or rights to the use of such information. King County shall not be liable for any general, special, indirect, incidental, or consequential damages including, but not limited to, lost revenues or lost profits resulting from the use or misuse of the information contained on this map. Any sale of this map or information on this map is prohibited except by written permission of King County.