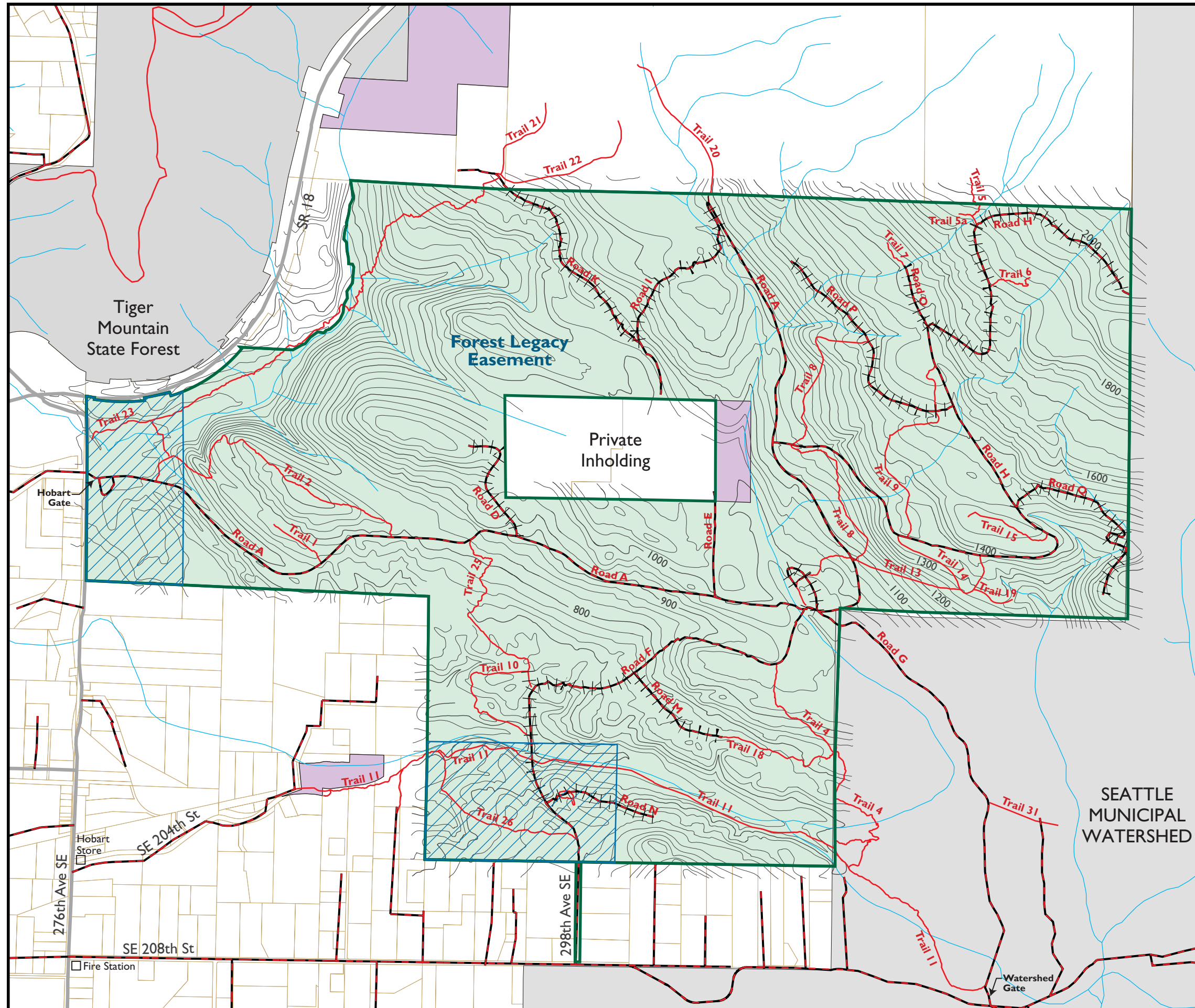
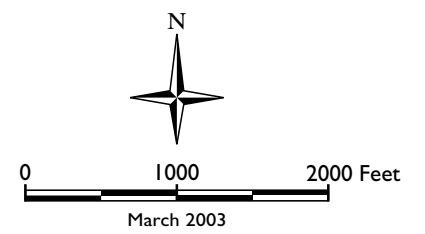


TAYLOR MOUNTAIN FOREST
Figure 7
Road Maintenance and Abandonment Plan (RMAP)



- Roads to inactivate over the next 5 years
- Taylor Mountain Forest
- Non-Easement Area
- Waterways Properties
- Contour Lines (25 Feet)
- Major Roads
- Local Roads
- Trails



King County
 Department of
 Natural Resources and Parks
Water and Land Resources Division

The information included on this map has been compiled from a variety of sources and is subject to change without notice. King County makes no representations or warranties, express or implied, as to accuracy, completeness, timeliness, or rights to the use of such information. King County shall not be liable for any general, special, indirect, incidental, or consequential damages including, but not limited to, lost revenues or lost profits resulting from the use or misuse of the information contained on this map. Any sale of this map or information on this map is prohibited except by written permission of King County.

Data Sources: King County Database: parcels, major roads, streams, Jones & Jones: topography, minor roads, trails.
 File Name: 0303taylorMTNroads7.eps wgb

Prepared by: DNRP GIS Unit and WLR Visual Communications and Web Unit