

# McGarvey Park Open Space

## 2015 Forest Harvest

Public Meeting  
Northwood Middle School  
March 16, 2015



**King County**

Department of Natural Resources and Parks



# Forest Stewardship Program

- Approximately 26,000 acres
- Have completed forest health assessment of all forest land
- Have completed 8 forest stewardship plans including McGarvey
- Completed 9 harvests and thinnings which included re-planting where necessary





Hwy. 169

McGarvey Park Open Space

Wetland 14

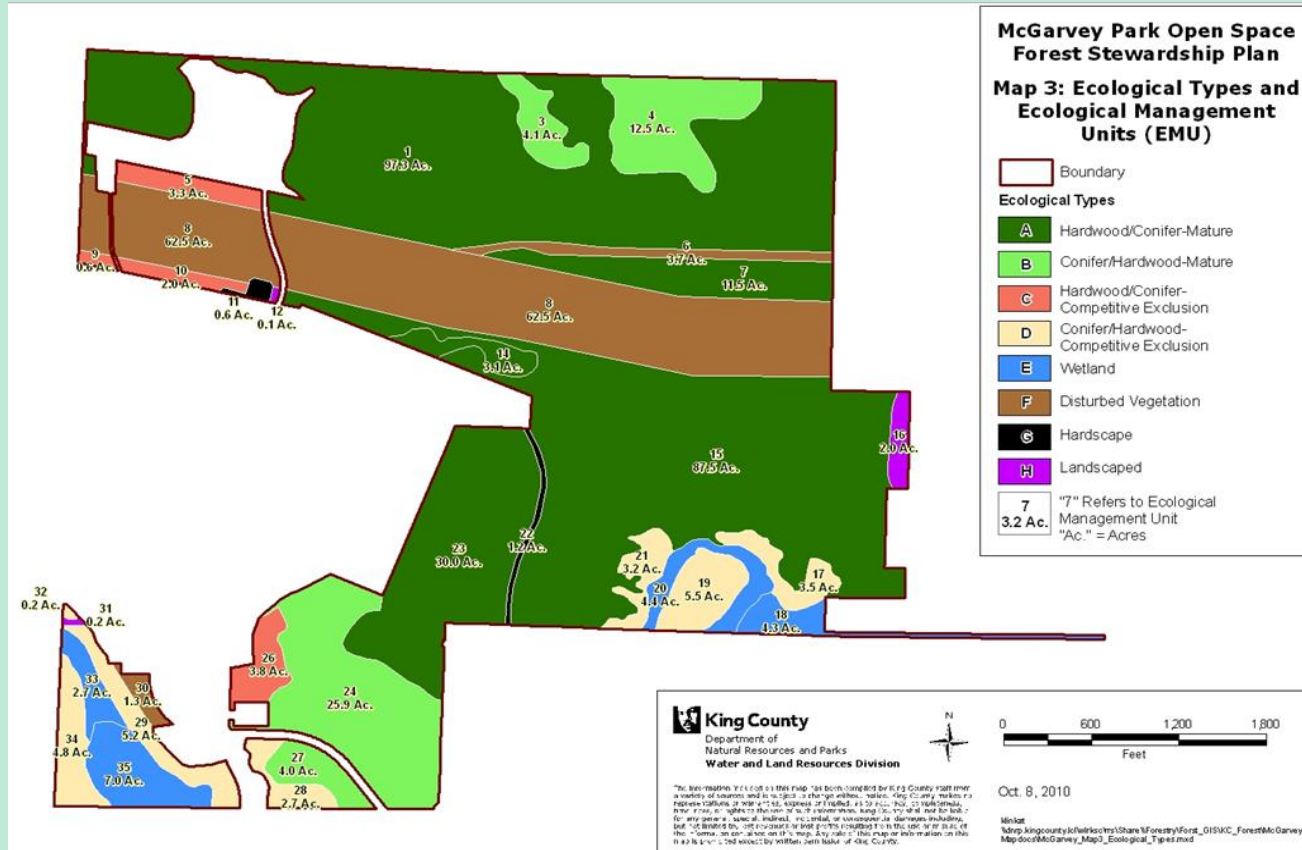
Lake Desire

Woodside at  
McGarvey





# McGarvey Forest Stewardship Plan

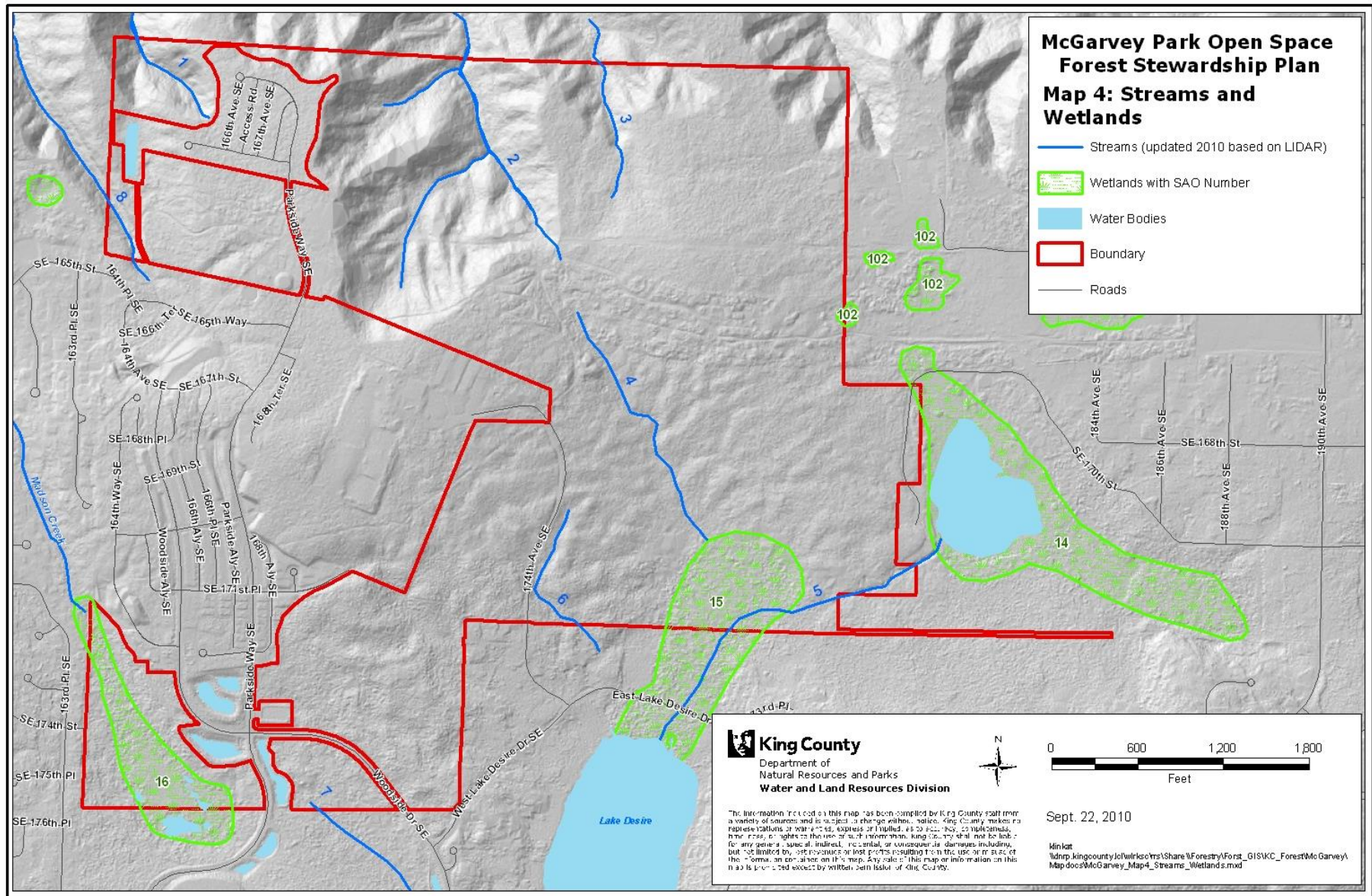


- Written in 2011
- Property is 400 acres
- Total of 32 stands
- Predominant forest type is Ecotype A at 233 acres.
- Composed of 55% maple, 17% alder, 7% cottonwood, 7% hemlock, 7% cedar, 3% Douglas-fir, and 4% miscellaneous species

# McGarvey Forest Stewardship Goals

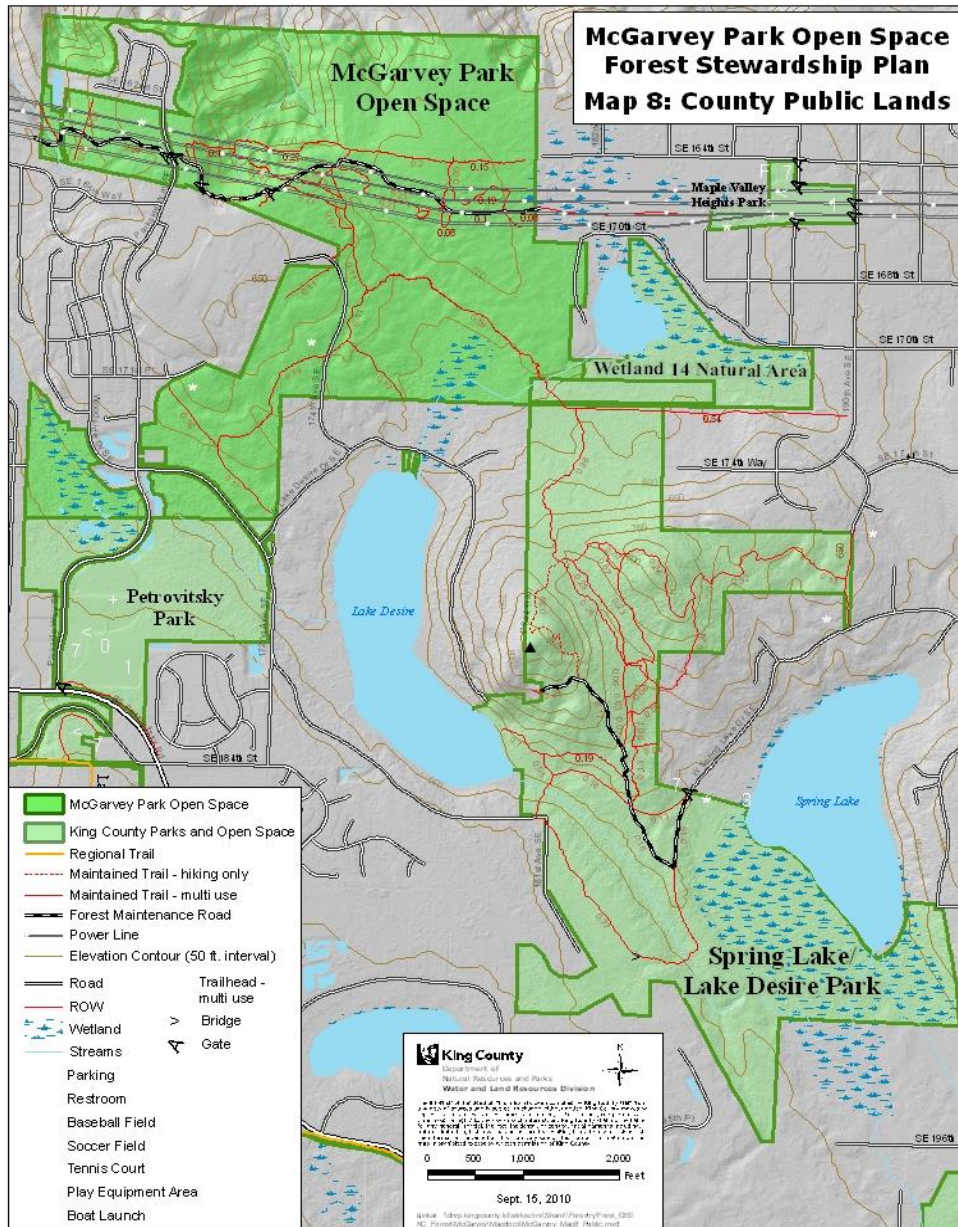
- Increase bio-diversity.
- Maintain or improve forest health.
- Harvest to accelerate development of coniferous forest.
- Maintain and improve the existing system of recreational trails.
- Provide opportunities for education and passive recreation for the public.
- Maintain or improve wildlife habitat for a diversity of species.
- Use revenue produced through ecologically sustainable management of the site to support the stewardship of the site or other King County Natural Resource Lands.

# McGarvey Forest Stewardship Plan





# McGarvey Forest Stewardship Plan

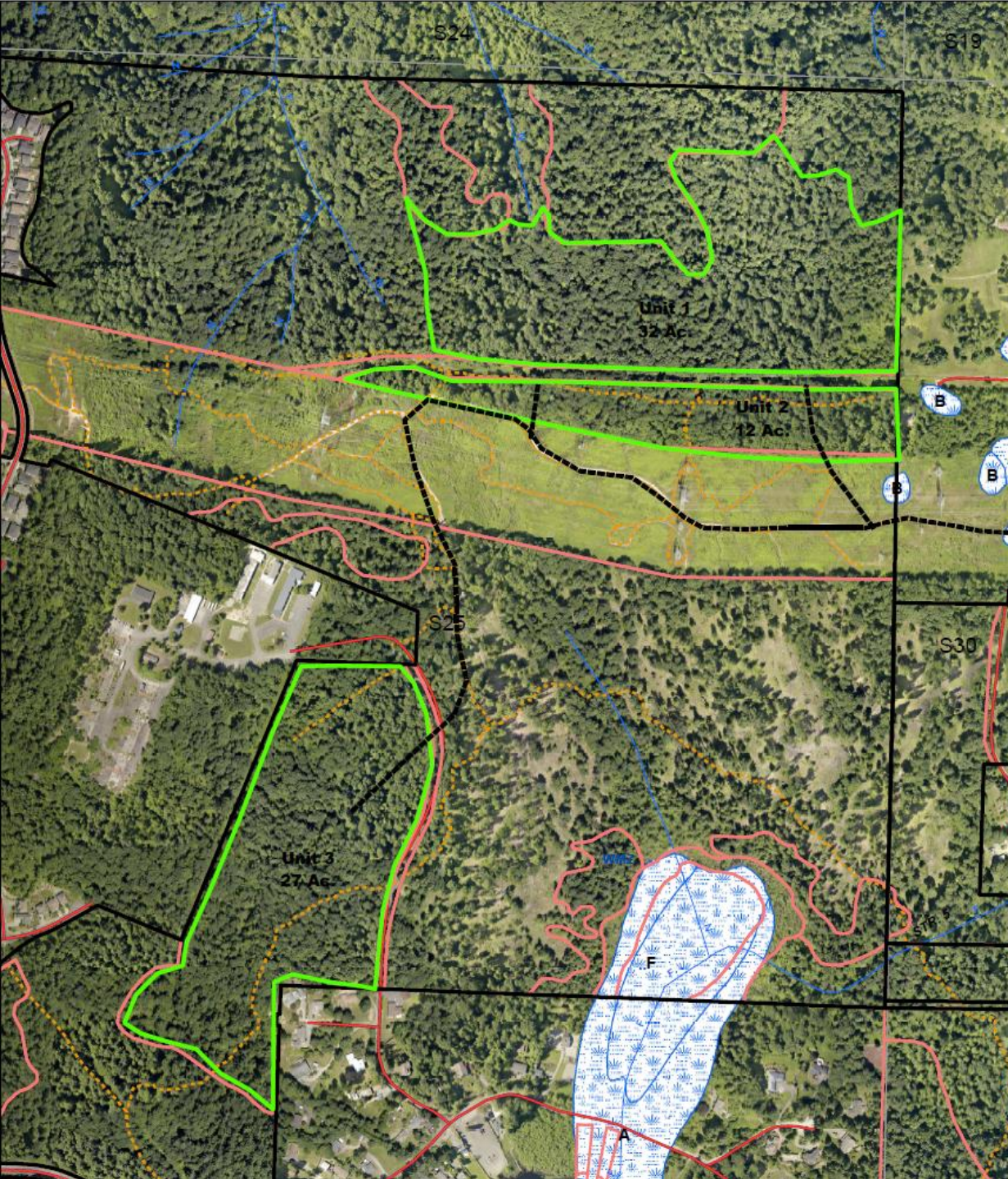


- Over five miles of trails.
- Primarily local hikers with occasional mountain bike use.

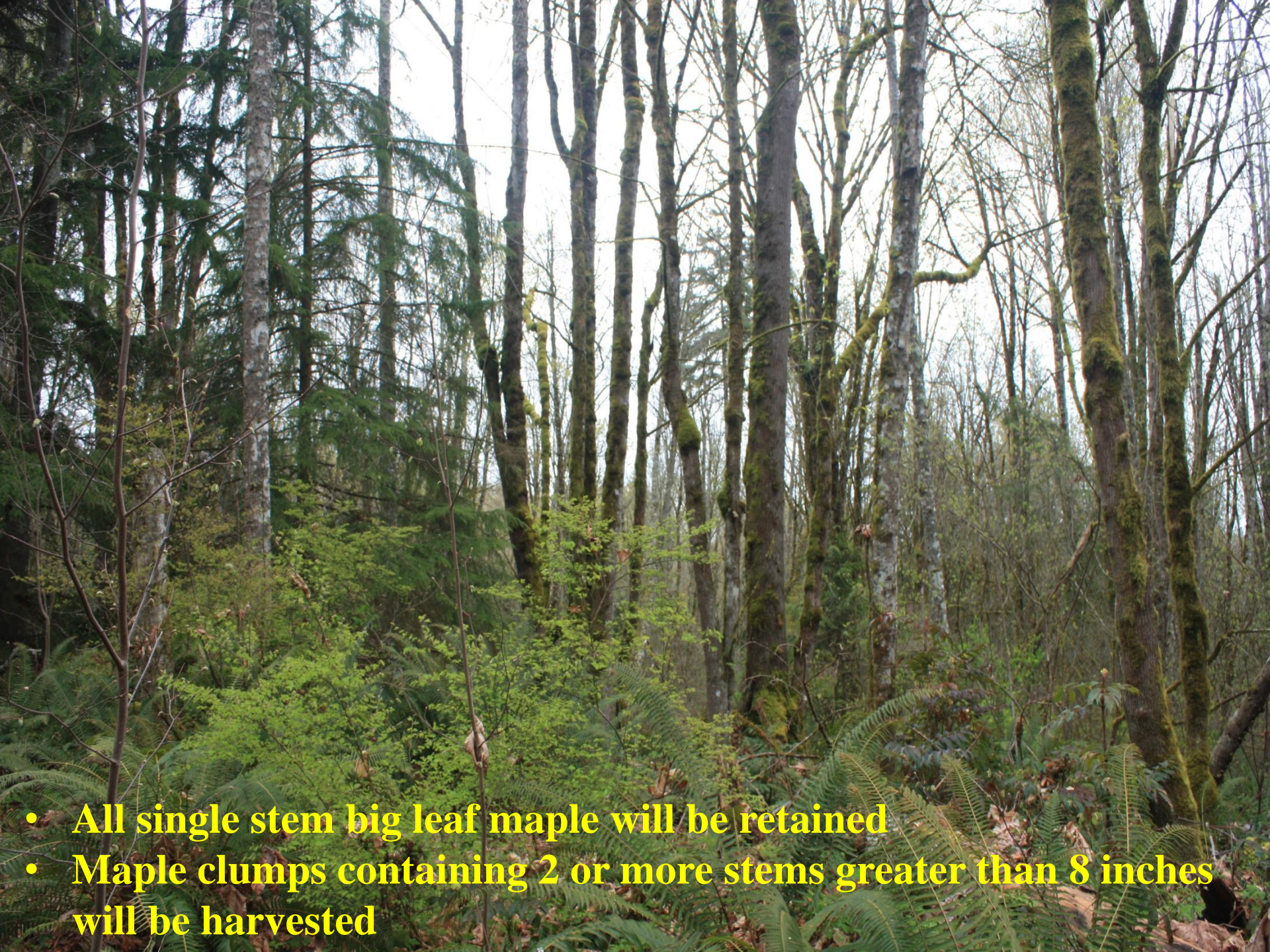


## 2015 Harvest Units

- 3 units
- Total of 70 acres
- 55-years old
- **Harvest goal: Accelerate the conversion of unhealthy stand to a conifer dominated forest**
- **Harvest dying and poor quality hardwoods**
- **Plant conifers following harvest**
- **Retain wildlife habitat snags**
- **Protect streams and wetlands**
- **Public safety – temporary trail closure**







- All single stem big leaf maple will be retained
- Maple clumps containing 2 or more stems greater than 8 inches will be harvested





**Most of the alder will be harvested.  
Short life span.**





- **Areas of moderately prolific hemlock and cedar regeneration.**
- **These younger trees will be retained and protected from logging damage.**





**All conifers will be retained as well as miscellaneous deciduous species**



# First Harvest Post Planting



**Restored trail**



**Deer browse protection**



# First Harvest Post Planting



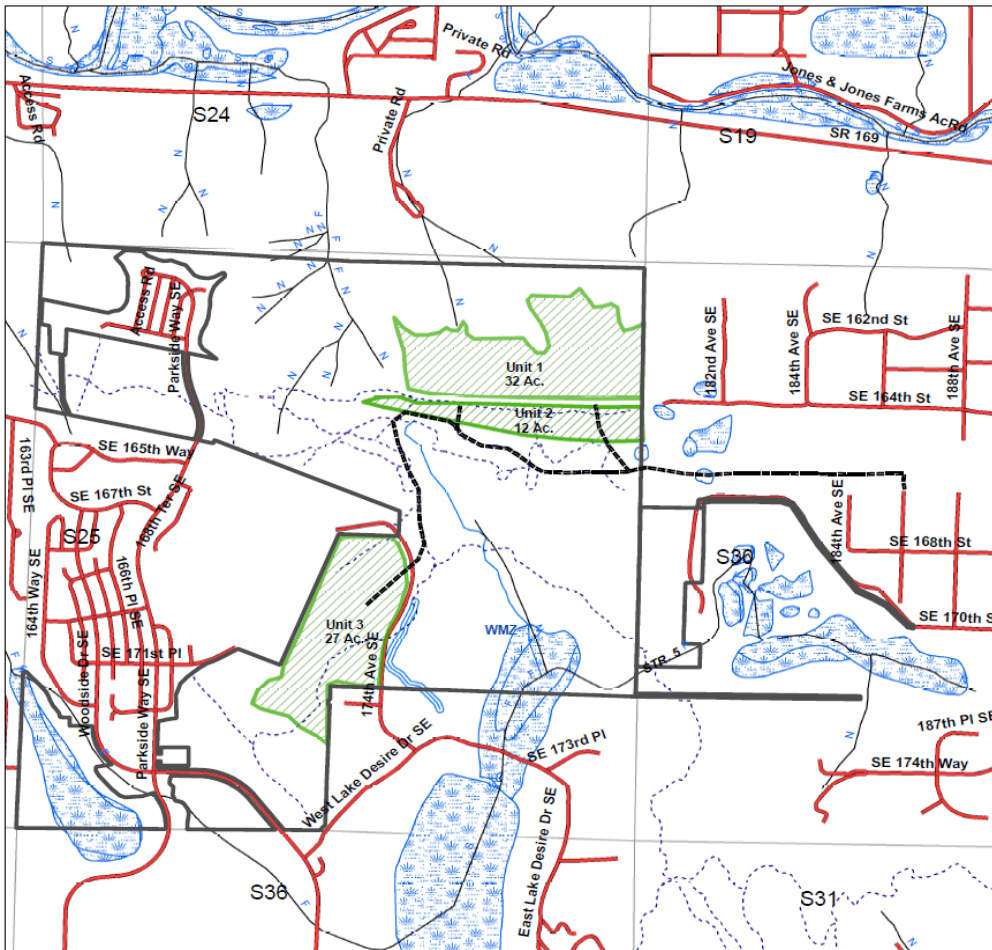
Conifer leave patch





**Harvested deciduous foreground – conifer retention background**



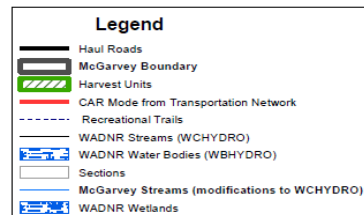


590 295 0 590 1,180 1,770 2,360 Feet



## McGarvey Park Open Space 2015 Harvest Access Map

The information included on this map has been compiled by King County staff from a variety of sources and is subject to change without notice. King County makes no representations or warranties, express or implied, as to accuracy, completeness, timeliness, or rights to the use of such information. This document is not intended for use as a survey product. King County shall not be liable for any general, special, indirect, incidental, or consequential damages including, but not limited to, lost revenues or lost profits resulting from the use or misuse of the information contained on this map. Any sale of this map or information on this map is prohibited except by written permission of King County.



## Log Hauling

- Average of 3-6 loads per day
- Logs hauled east along power line ROW to 186 Pl. SE to SE 168<sup>th</sup> St to 188<sup>th</sup> Ave SE to SE 170<sup>th</sup> St to 196<sup>th</sup> Ave SE. Then most likely Highway 18



# McGarvey Forest Harvest Next Steps

Task	Date
Deadline for public comments	3/30/2015
Submit WADNR forest practice application	4/3/2015
Advertise Invitation to Bid	5/3/2015
Complete thinning assuming an acceptable bid	July-Oct. depending on contractor availability