

King County Parks Levy Task Force



Meeting #3

Tuesday, July 17, 2012

4 – 6 pm

Mercer Island Community and Event Center

Meeting #3 Proposed Agenda

- I. Welcome / Introductions
- II. Task Force Business
- III. Recap of Meeting #2
- IV. 2008-2013 Open Space & Trails Levy Accomplishments
- V. An on-the-ground view of current facilities
- VI. Investing in our system for the future
- VII. Q&A and Discussion
- VIII. Next steps



Burke Gilman Trail Redevelopment



Marymoor Park

Task Force Business

- Review Meeting #3 agenda
- Approve Meeting #2 summary
- Announcements/Other items
 - Sign-in sheet
 - Field trip #1 – July 19
 - August Meetings:
 - August 7
 - August 21



Recap of Meeting #2



200 PARKS 175 MILES OF TRAIL 26,000 ACRES OF OPEN SPACE

King County Parks **Your** Big Backyard  King County

Funding Sources Matrix

Operating

Capital

Historical and Current Funding Sources (2008 - 2013)

~~General Fund~~

O&M Levy

Daily Operations & Maintenance

REET

OS & Trails Levy

Maintain

Preserve

- Storm damage
- Emergency repairs
- Clean-up

Enhance

- Trailheads
- Parking
- Field Conversions

Protect (Major Maint)

- Bridges
- Roofs
- Pavement
- Major facility repair

Expand

- RTS development
- Acquisitions
- CPG

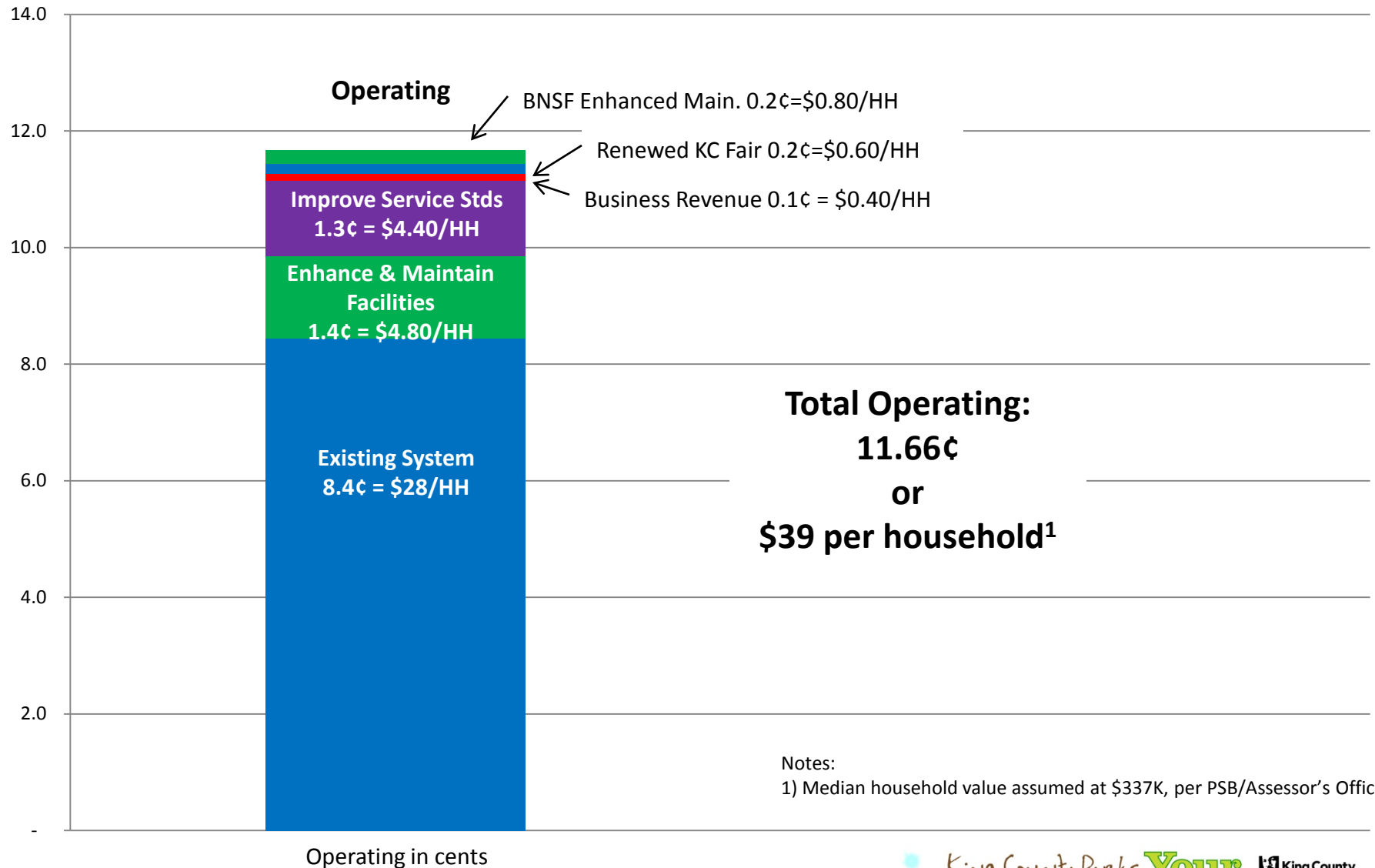
?

REET

?

Future Funding Sources (2014 – beyond)

2014-2019 Funding Options: Operating



Take Home Messages, Recap: Protecting our system for the future

- Funding operations at level only covering existing system would inadequately protect existing facilities and the public's investment and would lead to further erosion of service
- Proposed strategy is built on policy guidance and public input
- Proposed strategy furthers King County Parks' mission and vision, continuing on same course and building on 10 years of a successful transition as a refocused agency

Funding Sources Matrix

Operating

Capital

Historical and Current Funding Sources (2008 - 2013)

~~General Fund~~

O&M Levy

Daily Operations & Maintenance

REET

OS & Trails Levy

Maintain

Preserve

- Storm damage
- Emergency repairs
- Clean-up

Enhance

- Trailheads
- Parking
- Field Conversions

Protect (Major Maint)

- Bridges
- Roofs
- Pavement
- Major facility repair

Expand

- RTS development
- Acquisitions
- CPG

?

REET

?

Future Funding Sources (2014 – beyond)

Task Force Mission

The Parks Levy Task Force is charged to make recommendations by September 2012 addressing the following issues:

- *What should be done to preserve the County's 26,000-acre system of parks and trails after the current operating and capital levies expire at the end of 2013?*
- *What should be done to meet the future parks and recreation needs of King County residents?*

2008-2013 Open Space and Trails Levy: Accomplishments



200 PARKS 175 MILES OF TRAIL 26,000 ACRES OF OPEN SPACE

King County Parks **Your** Big Backyard  King County 10

2008-2013 Open Space & Trails Levy

5¢

King County Parks 60% (= 3¢)	39 Cities 20% (= 1¢)	Woodland Park Zoo 20% (= 1¢)
<ul style="list-style-type: none"> Open Space & Natural Lands Acquisition Regional Trail Acquisition & Development Community Partnerships & Grants Program ($\leq \\$500k / yr$) Repay costs of interim financing (none) 	Proportional allocations based on <ul style="list-style-type: none"> Population (50%) Assessed value (50%) <ul style="list-style-type: none"> Open Space & Natural Lands Acquisition Trail Acquisition & Development 	<ul style="list-style-type: none"> Environmental Education Conservation Programs Green Space Acquisitions Capital Improvement Projects, excluding parking
A reasonable portion retained by the county for expenditures related to administration and distribution of levy proceeds		

Accomplishments



Upper Raging River



Duthie Hill Grand Opening

Total KC Portion of Levy = \$67.7M

- Regional Trails = \$45M
 - ✓ 2 miles redeveloped
 - ✓ 8.75 miles newly paved
 - ✓ 26 miles in feasibility and planning/design
 - ✓ 25+ acres acquired
- Open Space Acquisition = \$20M
 - ✓ 5,500 acres protected
 - 700 acquired in fee
 - 4,800 acquired in easement
- CPG Program = \$3M
 - ✓ 40 total projects/project partners
 - ✓ 80,000 total users represented

2008-2013 Open Space & Trails Levy: Regional Trails



Burke Gilman Trail



Sammamish River Trail

Prioritization Criteria

- **Safety:** Ensure high usage, aging trails are brought up to current development standards
- **Connectivity:** Complete missing links to enhance usability and develop network
- **Urban Center Connections:** Consistent with regional planning goals to enhance non-motorized mobility
- **Equity:** Consideration given to geographic equity and effects on health inequities/ disparities
- **Timing:** Maximize opportunity to continue next phase of a project
- **Aesthetic/Scenic Value:** Provide public with pleasing experience

2008-2013 Open Space & Trails Levy: Regional Trails



Burke-Gilman Trail - Lake Forest Park Redevelopment

- Project goal: Safety
- 2 mile segment
 - Oldest trail segment (1978)
 - Redeveloped to current standards
- Funding
 - Design - REET
 - Construction - OS&T Levy
- Completed February 2012



2008-2013 Open Space & Trails Levy: Regional Trails



Foothills Interim Trail

- Project goal: Safety, Connectivity, Equity
- Phase I: Intersection and bridge improvements
- Completed December 2011
- Collaboration with Cities of Buckley and Enumclaw

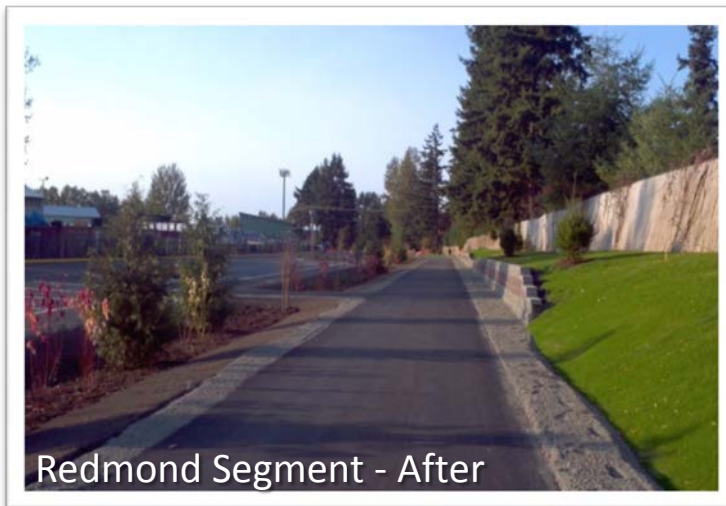


2008-2013 Open Space & Trails Levy: Regional Trails



East Lake Sammamish Trail

- Project goal: Safety, connectivity
- 3.2 miles developed:
 - Redmond Segment (Nov 2011), with a 77-stall parking lot
 - Issaquah Segment (In construction)
 - Sammamish Segment (In design)
- Funding:
 - Total estimated cost: \$50M+
 - Grant funding secured to date: \$3M

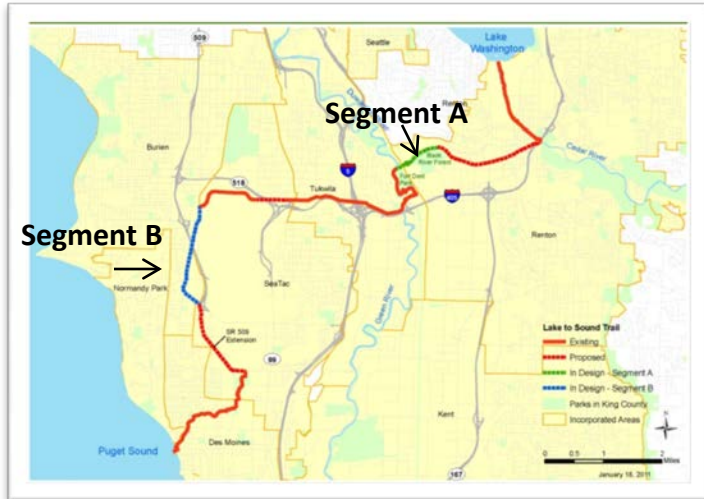


Redmond Segment - After

2008-2013 Open Space & Trails Levy: Regional Trails

Lake-to-Sound Trail

- Project goal: Connectivity, Equity
- 16-mile corridor
 - Linking Lake Washington to Puget Sound
 - Collaboration with Cities of Burien, Des Moines, Renton, SeaTac, and Tukwila
 - Links to airport, commuter rail, light rail, other KC regional trails
- Phased Project:
 - Currently in design
 - Construction of Segment B anticipated for 2013



2008-2013 Open Space & Trails Levy: Regional Trails

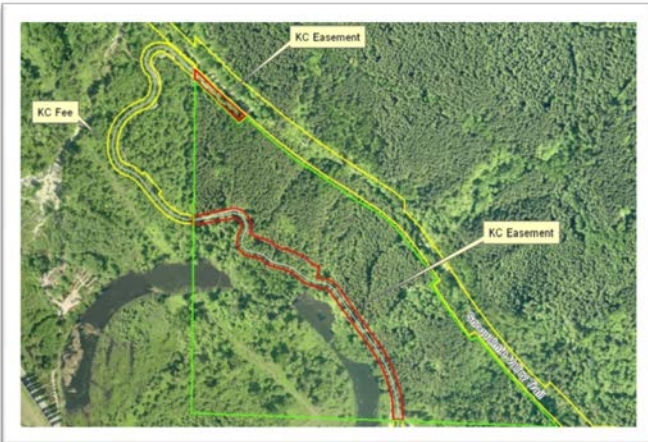


Marymoor Connector Trail

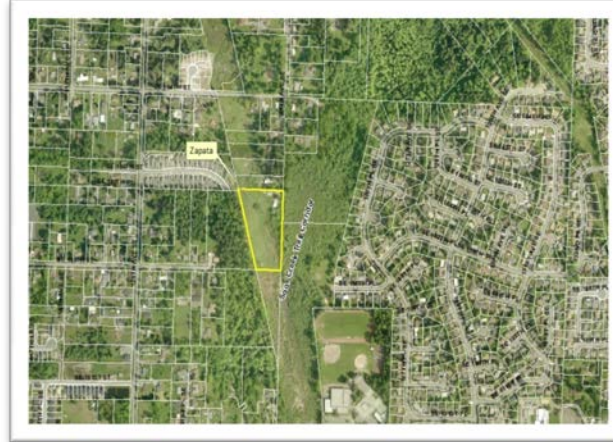
- Project Goal: Connectivity, Safety
- 1.5 miles developed
 - Connects Sammamish River Trail to East Lake Sammamish Trail
- Funding:
 - Largely by REET
 - Completed with OS&T Levy
- Completed May 2009



2008-2013 Open Space & Trails Levy: Regional Trails: Acquisitions



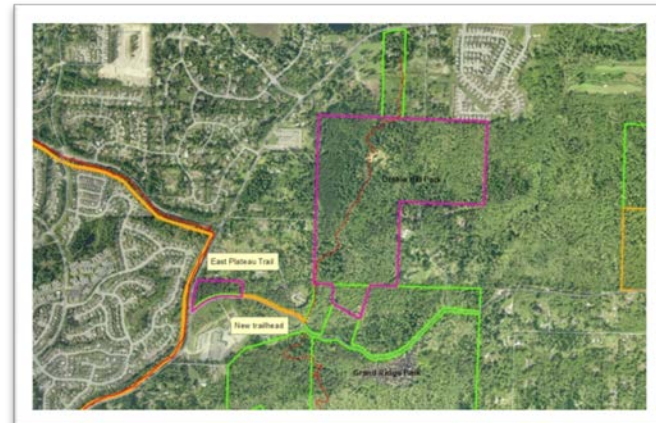
Snoqualmie Valley Trail - Rutherford Slough easement



Soos Creek Trail – Zapata acquisition



Foothills Trail – Thomas easement



East Plateau Trail/Duthie Hill

2008-2013 Open Space & Trails Levy:

Open Space: Acquisitions



Cougar Mountain:
View from Precipice Trail Parcel

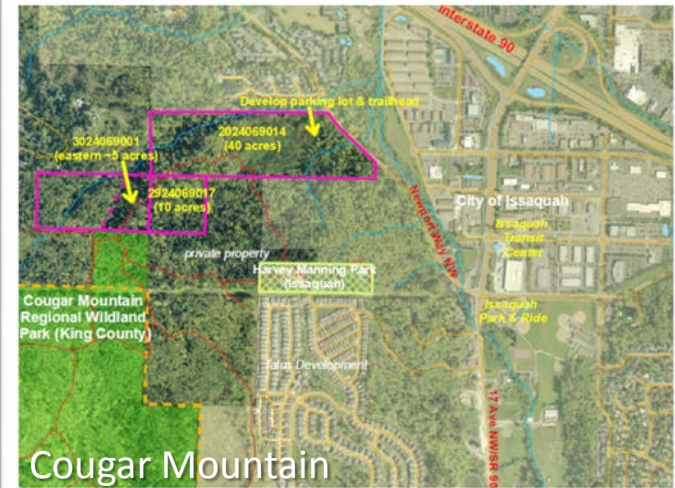
Eligibility Criteria

- Must be critical to the preservation of regional watersheds and streams
- Must ensure appropriate public access
- Projects reviewed and recommended by the King County Conservation Futures Citizen Advisory Committee

2008-2013 Open Space & Trails Levy: Open Space: Acquisitions



Island Center Forest



Cougar Mountain



Bass Lake Natural Area



Carnation Marsh Natural Area

200 PARKS 175 MILES OF TRAIL 26,000 ACRES OF OPEN SPACE

King County Parks **Your** Big Backyard  King County

2008-2013 Open Space & Trails Levy: Community Partnerships & Grants Program

Program Accomplishments

- \$3M allocated from OS&T Levy
- More than 40 projects in progress or completed since program began in 2003
- Total value of new public recreation amenities estimated at \$50M
- Community partners match with in-kind donations of labor, goods and services, and cash donations



2008-2013 Open Space & Trails Levy: Community Partnerships & Grants Program



200 PARKS 175 MILES OF TRAIL 26,000 ACRES OF OPEN SPACE

King County Parks **Your Big Backyard**  King County 23

Community Partnerships & Grants: Partner Presentations



Sammamish Rowing Association New Boathouse Project



Who is SRA

- SRA is a non-profit 501(c)(3) organization, founded in 1995
 - 3 full-time employees and 18 part time coaches along with 100's of volunteers
- One of the largest rowing organizations in the United States
 - Over 175 junior rowers on competitive team
 - 120+ regular masters rowers, plus over 100 new adults each year in LTR
- The only rowing organization on the Eastside
 - Located in Marymoor Park
- Independently operated
 - SRA is not subsidized by any City or County government- all operations, equipment and special needs are funded independently
 - King County has been very supportive of the program: First CPG Program organization (Community Partners & Grants)

Our Facilities

We are currently in a temporary facility whose expiration date has long passed

- Built in 1978 by volunteers
- Saved from demolition by SRA in 1997
- Many boats stored outside due to lack of space
- No running water or office space.
- Located in wetlands



We are in desperate need to finish our new boathouse to allow our program to continue to meet the needs of our growing community.

King County

- King County Parks has been a committed and dedicated partner of Sammamish Rowing Association. In 1997, they were instrumental in helping the organization move to its current location. King County Parks recognizes opportunities to help support public-private partnerships that are dedicated to recreational, community-centered activities.
- Sammamish Rowing Association was the inaugural recipient of King County's Community Grant Program, which has been a critical funding source for the association's efforts in planning for its permanent facility. With increasingly restrictive regulations on lakefront construction, the Parks Department of King County has been integral in helping the association's leadership navigate the extensive permitting process.

"Sammamish Rowing Association is an ideal partner for King County Parks. Their commitment to the community in offering such a fun, recreational program that is accessible to all, while being fantastic stewards of our land and parks, is a natural for us. We are honored to be part of such an exciting project in the creation of a permanent new boathouse."

- Suzanne Little, King County Parks & Recreation

CPG

- The cost to complete our project is \$3.3 Million and King County has generously donated \$950,000 to help us.
 - **Five acre mitigation project**
 - Over 8,000 stakes planted
 - Five years of land maintenance
 - Pathway for bird watchers
 - Removal of invasive species
 - **Left hand turn lane**
 - New turn lane on West Lake Samm Pkwy
 - Improved bike lane
 - Restored shoulder
 - **New Boathouse**
 - Two story, 12,000 sq. ft facility for community
 - Workout space
 - Running water and bathrooms
 - Offices
 - Ability to revive our adaptive program
 - Dock and path way safety lighting
 - Above flood plain





Ravensdale Vision



On-the-Ground View of Current Facilities



200 PARKS 175 MILES OF TRAIL 26,000 ACRES OF OPEN SPACE

King County Parks **Your**
Big Backyard  King County

Facilities Snapshot



Historic Preston Community Center

- 175 Miles of regional trails
- 82 athletic fields
- 72 Bridges & trestles
- 60 Parking lots
- 29 Play areas
- 26 Picnic shelters
- 22 Restrooms
- 11 Maintenance shops
- 3 Historic buildings
- 2 Equestrian arenas

Major Maintenance



WKCAC Upgrades (Aug 2011)



Tolt-McDonald Shop (2009)

Goals

- Address critical safety needs
- Preserve/protect the public's investment
- Avoid higher cost of deferred maintenance
- Avoid potential shutdown of facility
- Respond to regulatory changes

Major Maintenance Snapshot: Marymoor Park



Clise Mansion



Park Office



Concert Venue

- Historic district:
 - Clise Mansion (event rentals) and Cottage (Park business office)
- 2 maintenance shops
- Recreation facilities & infrastructure:
 - Concert venue
 - 25 Athletic fields
 - 1.5 mile of regional trail
 - 4 Tennis courts
 - Velodrome
 - 6 Picnic shelters
 - 4 Restrooms
 - 7 parking lots (4 paved/3 gravel)
 - Recreation and event area (5 acres)
 - More than 1 mile paved roadway

Major Maintenance Snapshot: Weyerhaeuser King County Aquatic Center



Exterior



Natatorium

- 3 pools (built in 1989):
 - Olympic-sized competition pool
 - Dive tank
 - Recreation pool
 - Pool paks
 - Natatorium lighting and scoreboard
- Seating for 2,500 spectators
- Banquet hall (built in 1997)
- 3 parking lots

Major Maintenance Snapshot: Dockton Park



- 2 floating docks and boat ramp
- Paved walkway
- 2 restrooms
- Picnic shelter
- Play area
- 2 parking lots



Major Maintenance Snapshot: Maintenance Shops

- 11 shops
(serve as offices, fabricating shops, and storage for vehicles, heavy equipment, and other tools, equipment and supplies)
- Mobile homes and single-family homes serve as offices and shops
- Many facilities were meant to be temporary
- Dilapidated facilities:
 - Not up to code
 - Lack sufficient restrooms, heat, not ADA compliant



Cottage Lake Shop



Renton Shop

Major Maintenance Snapshot: Maintenance Shops



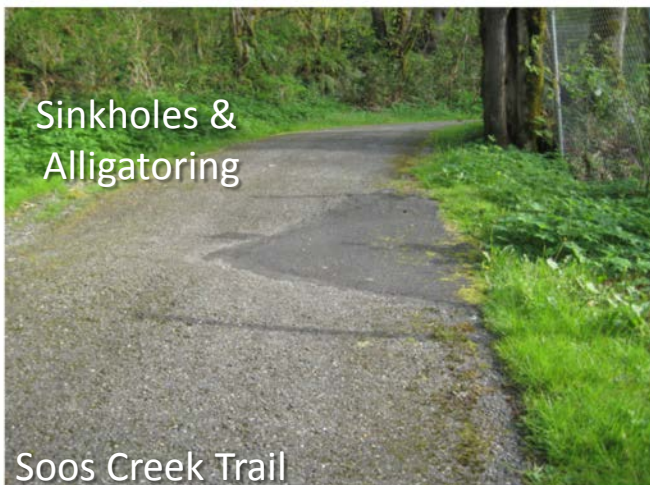
Soos Creek Shop



Soos Creek Shop

Major Maintenance Snapshot: Regional Trails Paving Repair

- Typical repair project cost: \$20,000 to \$80,000
- If deferred, redevelopment could cost \$3M to \$5M per mile



Major Maintenance Snapshot: Regional Trails Paving Repair



Major Maintenance Snapshot: Bridges & Trestles



Snoqualmie Valley Trail –Tokul Trestle

- 72 bridges and trestles:
 - From abandonment of railroad lines
 - Some are nearly 100 years old
 - Span 100+ feet and located in remote areas
 - 4-year inspection cycle

Major Maintenance Snapshot: Other Facilities and Issues



- Play Areas: 29 in system; 6 upgrades deferred due to lack of funding
- Parking Lots: 60 in system
- Regulatory Changes (ex: ADA, pool drains)
- Major Vandalism (ex: arson)
- Mother Nature / Accidents: Floods, storms, fallen trees



Conditions of Current Facilities: Take Home Messages

- King County Parks is a 75-year-old system, with some features that are even older
- Facilities are the backbone of the system
- Major maintenance is intended to promote safety and the long-term viability of our facilities
- Major maintenance that is deferred too long can lead to long-term damage and even permanent closure of facilities

Investing in our system for the future



200 PARKS 175 MILES OF TRAIL 26,000 ACRES OF OPEN SPACE

King County Parks **Your Big Backyard**  King County 45

Funding Sources Matrix

Operating

Capital

Historical and Current Funding Sources (2008 - 2013)

~~General Fund~~

O&M Levy

Daily Operations & Maintenance

REET

OS & Trails Levy

Maintain

Preserve

- Storm damage
- Emergency repairs
- Clean-up

Enhance

- Trailheads
- Parking
- Field Conversions

Protect (Major Maint)

- Bridges
- Roofs
- Pavement
- Major facility repair

Expand

- RTS development
- Acquisitions
- CPG

?

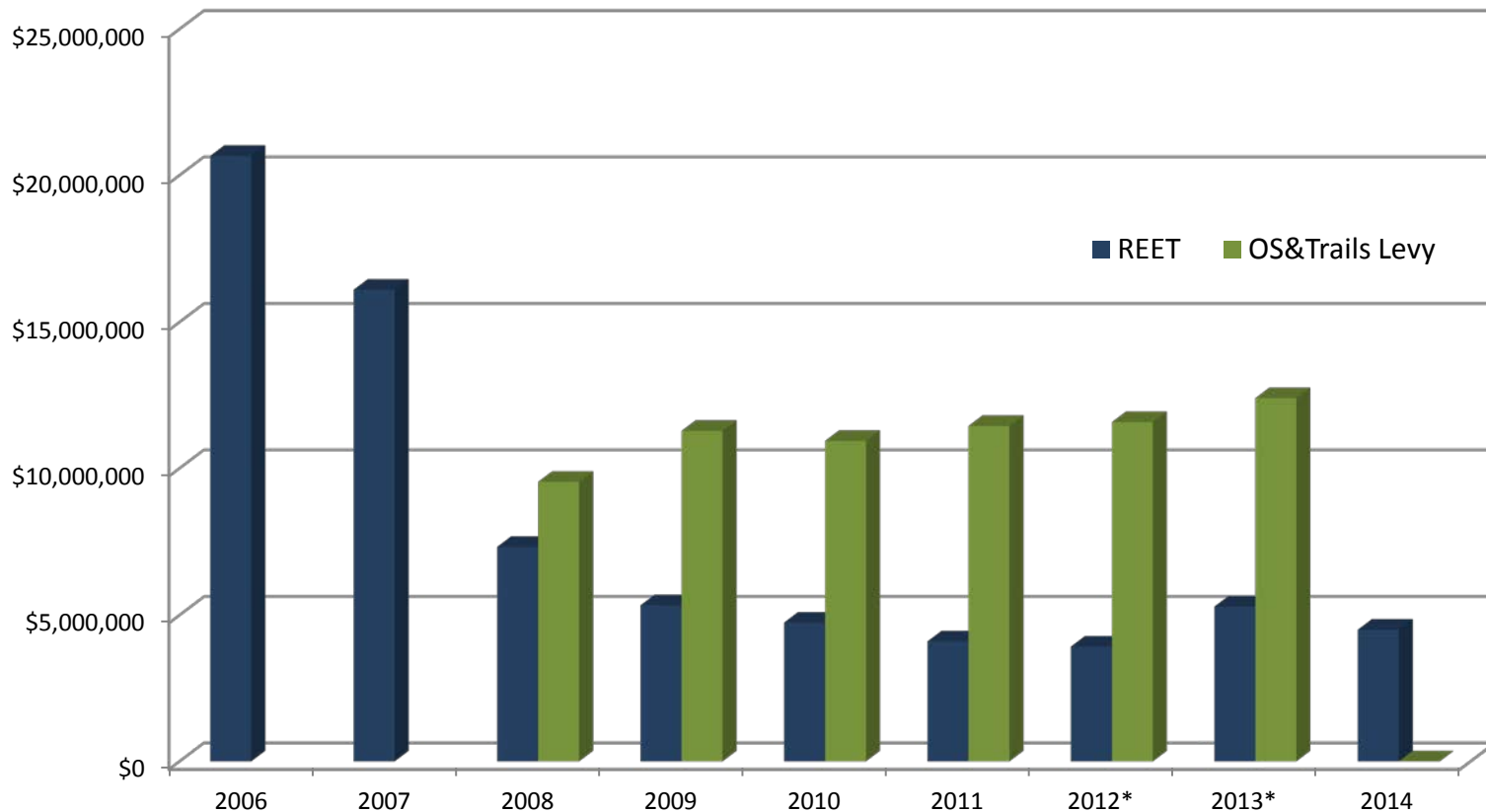
REET

?

Future Funding Sources (2014 – beyond)

2008-2014 Capital Funding

KC Parks CIP Revenues



2011 Customer Satisfaction Initiative



- 1700 online respondents
- 400 park user interviews
- 16 jurisdictions (Parks Directors)
- 15 King County employee meetings
- 2 focus groups

Common Themes

King County's parks, trails, and natural areas - wise investment

Invest in maintenance and protect existing infrastructure

Regional trails: good fit for King County; focus on missing links

Partnerships are critical, leverage tight resources

Capital Needs & Opportunities

2014-2019 Options	Annual	Levy Rate	Dollars per Household ¹
1. Major Maintenance			
2. Regional Trails System - Existing Corridors			
3. Regional Open Space Acquisitions			
4. Community Partnerships & Grants Program			
5. Accelerated Regional Trail Development (BNSF, Lake to Sound)			

Capital Needs & Opportunities

2014-2019 Options	Annual	Levy Rate	Dollars per Household ¹
1. Major Maintenance			

Includes:

- 1a. Major Maintenance Study Priorities
- 1b. Maintenance Shops
- 1c. Bridges & Trestles
- 1d. Other Needs (Outside of scope of maintenance study)

1. Major Maintenance:

1a. Major Maintenance Study Priorities

Major Maintenance Needs Study

- 2012 Update of 2007 major maintenance study
- Physical assessment of 18 sites
- Informs a 6-year plan to prioritize major maintenance projects



Architecture
Engineering
Planning
Interiors

**King County MDS Parks
Maintenance Study Refresh**
King County, Washington

Final Report
DLR Group Project No. 73-12103-05

June 29, 2012

NOTICE: These documents are instruments of professional service, and information contained therein is incomplete unless used in conjunction with DLR Group's interpretations, decisions, observations and administrations. Use or reproduction of these documents in whole or in part without DLR Group's consent is in violation of common law, copyrights, statutory and other reserved rights, which preempt state and local public records act.



© 2012 DLR Group inc., a Washington corporation, ALL RIGHTS RESERVED.

1. Major Maintenance:

1a. Major Maintenance Study Priorities



Sample of Findings

- Marymoor Park:
 - 3 million visitors annually takes a toll: water, sewer, storm drainage systems undersized to handle level of usage
- WKCAC:
 - Investment over last 5 years has paid off, but still substantial investment needed
- Trails and paved areas:
 - Parking lots, pedestrian walkways and trail repairs are high priority for safety
- Buildings
 - Most are dated and contribute to poor energy performance



1. Major Maintenance:

1b. Maintenance Shops

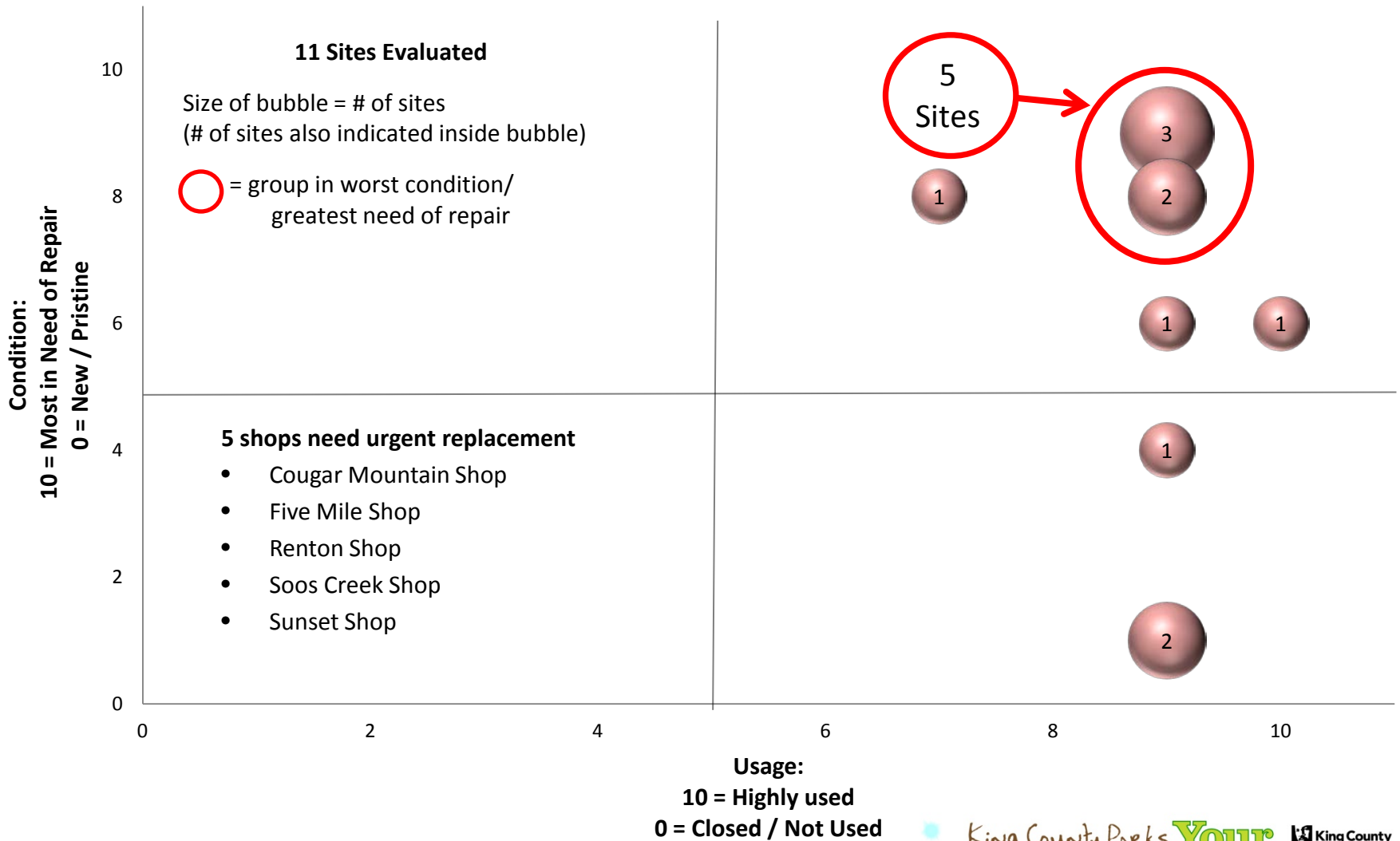
Needs:

- Correct health, safety, and building code violations
- Retrofit for earthquakes
- Facilities have fewer than 50% of required building/program capacity needs
- Address equipment, supplies, and utility inefficiencies, as well as inefficiency due to travel time



1. Major Maintenance:

1b. Maintenance Shops



1. Major Maintenance:

1b. Maintenance Shops



Renton Shop Storage

1. Major Maintenance:

1c. Bridges & Trestles



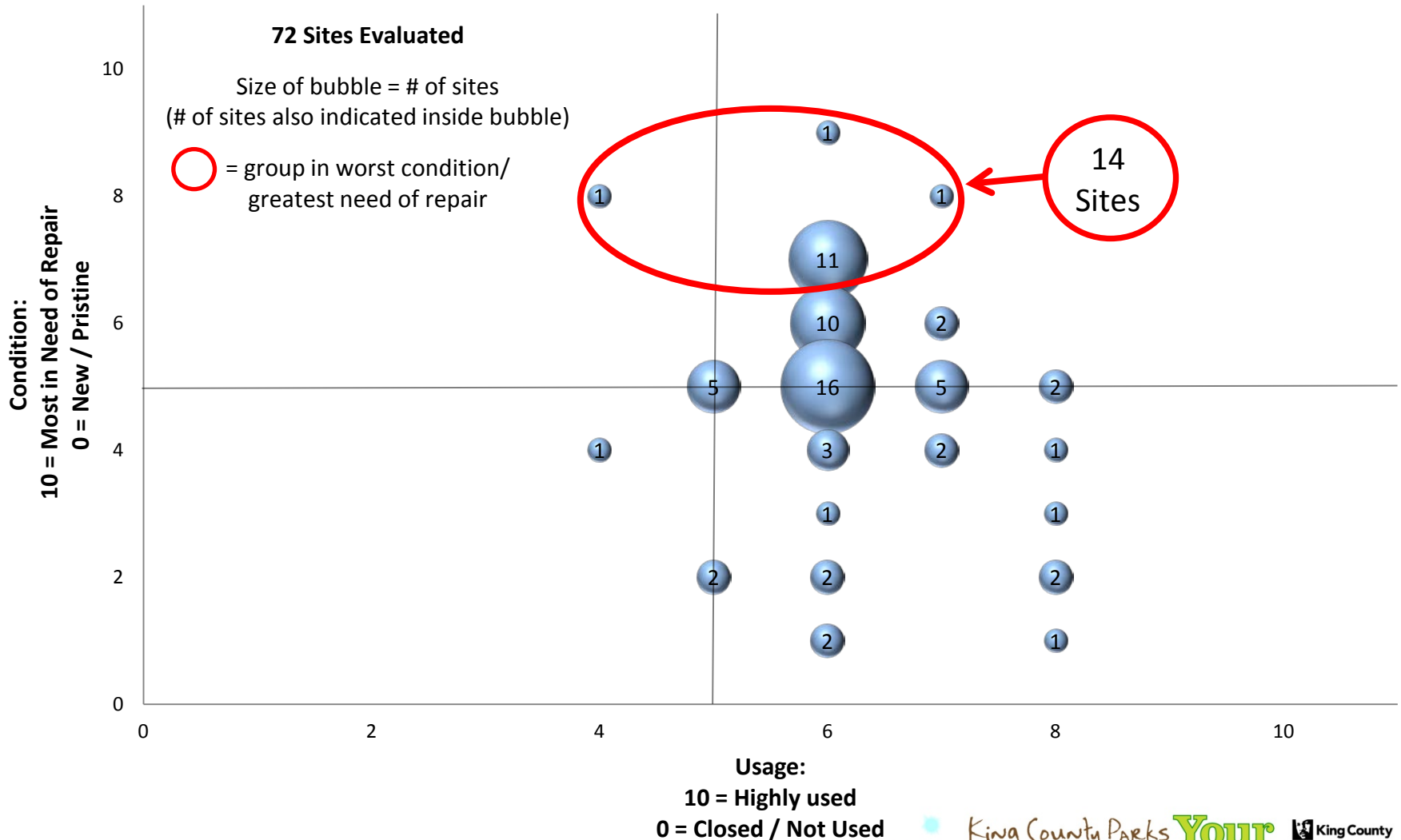
Snoqualmie Valley Trail

Needs:

- 14 bridges with 7, 8, or 9 rating for condition on 1-10 scale
 - 7 = needs repair in next 3 years
 - 10 = needs to be closed
- 4 bridges currently 'load restricted' (vehicles prohibited)
- Higher repair costs if deferred
- Could mean trail closure
- Risk of not being able to replace at all

1. Major Maintenance:

1c. Bridges & Trestles



1. Major Maintenance:

1d. Other Needs



Petrovitsky Park synthetic turf field

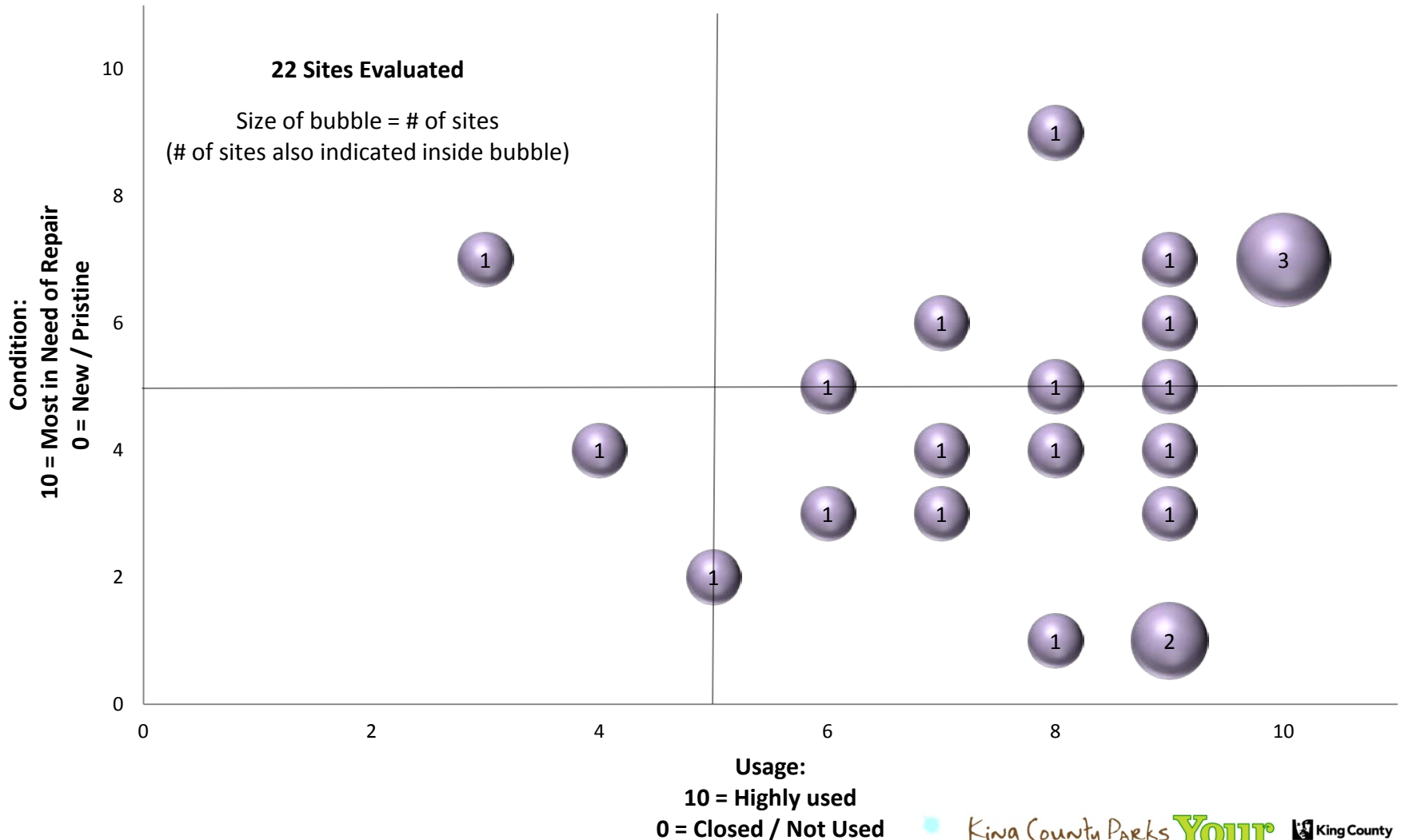


Five Mile Lake: restroom after arson

- Facilities not covered in maintenance study
 - Play areas
 - Restrooms
 - Parking lots
 - Ballfields
- Regulatory changes
- Major vandalism
- Mother Nature / Accidents

1. Major Maintenance:

1d. Other Needs - Restrooms



Capital Needs & Opportunities

2014-2019 Options	Annual	Levy Rate	Dollars per Household ¹
1. Major Maintenance			
2. Regional Trails System - Existing Corridors			

2. Regional Trails System: Existing Corridor Build-Out



- East Lake Sammamish Trail
 - South Sammamish Segment
- Sammamish River Trail
 - Redevelop to current standards
- Lake-to-Sound Trail
- Green River Trail
 - Connection to Seattle System
- Green-to-Cedar River Trail
 - Connection to Black Diamond
- Soos Creek Trail
 - Connection to Cedar River Trail
 - Connection to Green-to-Cedar River Trail
- Foothills Trail
 - Connection to Buckley/Pierce County System
- Snoqualmie Valley Trail
 - Extension to Snohomish County System
- Gateways/Trailheads

200 PARKS 175 MILES OF TRAIL 26,000 ACRES OF OPEN SPACE

Capital Needs & Opportunities

2014-2019 Options	Annual	Levy Rate	Dollars per Household ¹
1. Major Maintenance			
2. Regional Trails System - Existing Corridors			
3. Regional Open Space Acquisitions			

3. Regional Open Space Acquisitions

Long term vision:

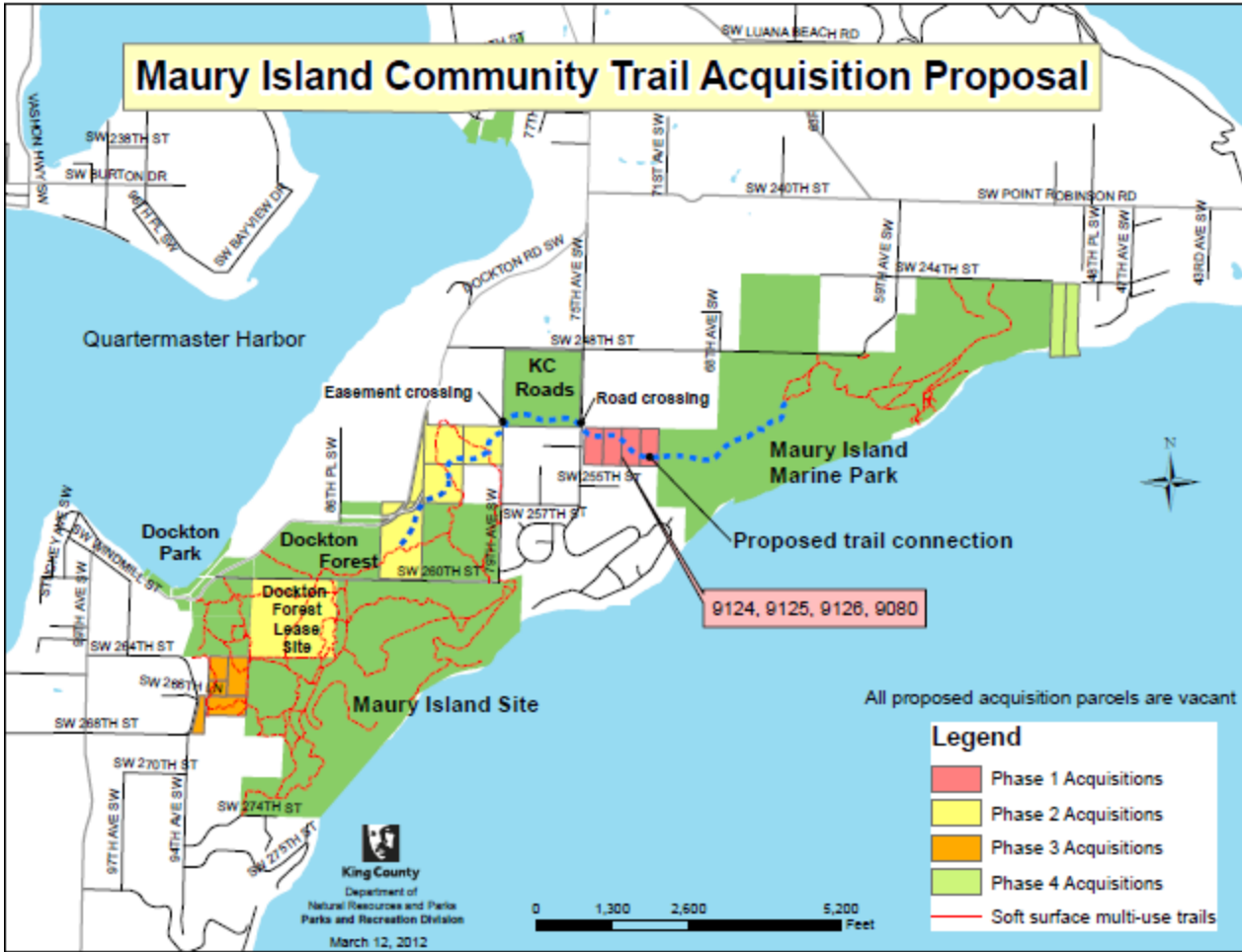
- Identified high priority lands to acquire over the next 30-50 years
- Focus on acquisitions that preserve and promote open space corridors
- Near-term opportunities due to real estate market

Benefits:

- Provides recreation opportunities
- Improves ecological functions
- Protects wildlife corridors, native biodiversity
- Enhances quality of life



3. Regional Open Space Acquisitions



Capital Needs & Opportunities

2014-2019 Options	Annual	Levy Rate	Dollars per Household ¹
1. Major Maintenance			
2. Regional Trails System - Existing Corridors			
3. Regional Open Space Acquisitions			
4. Community Partnerships & Grants Program			

4. Community Partnerships & Grants

Long-Term Vision

- Build strategic partnerships to address gaps in programming, recreation opportunities
- Provide variety of types of support for CPG partners, including capacity building
- Identify acquisitions that will provide opportunities for more active/developed recreation

Benefits

- Leverage public investment, realize cost efficiencies, generate revenue
- Respond to emerging recreation demands



Growing popularity of lacrosse



Emerging sport of cyclocross

Capital Needs & Opportunities

2014-2019 Options	Annual	Levy Rate	Dollars per Household ¹
1. Major Maintenance			
2. Regional Trails System - Existing Corridors			
3. Regional Open Space Acquisitions			
4. Community Partnerships & Grants Program			
5. Accelerated Regional Trail Development (BNSF, Lake to Sound)			

5. Accelerated Regional Trail Development: BNSF/Eastside Rail Corridor



Long-Term Vision

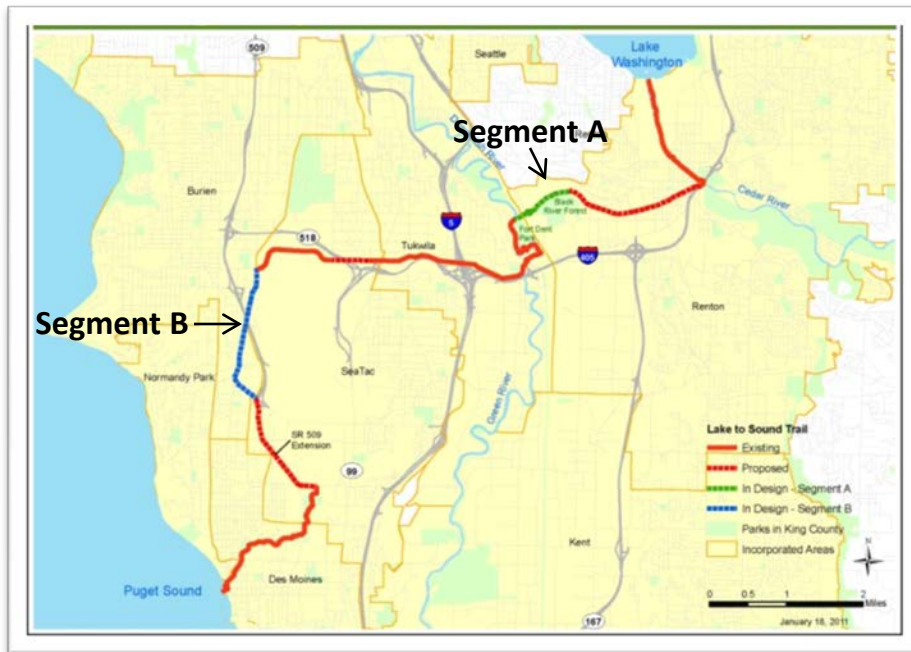
- 21-mile trail corridor
- Phased planning and development approach:
 - Phase I: Interim gravel trail (no bridge replacement)
 - Phase II: Master planned paved trail



Benefits

- North-South spine from Renton to Woodinville
- Links to other trails to create system from Snohomish to Pierce County

5. Accelerated Regional Trail Development: Lake-to-Sound Trail



Long-Term Vision

- 16-mile corridor
- Phased planning and development approach:
 - Currently in design for Segments A and B
 - Construction of Segment B anticipated in 2013

Benefits

- Reaching underserved community with regional trail system, linking to airport, light rail, and other trails
- Addressing public health outcomes: 59-66% of population in trail area overweight or obese

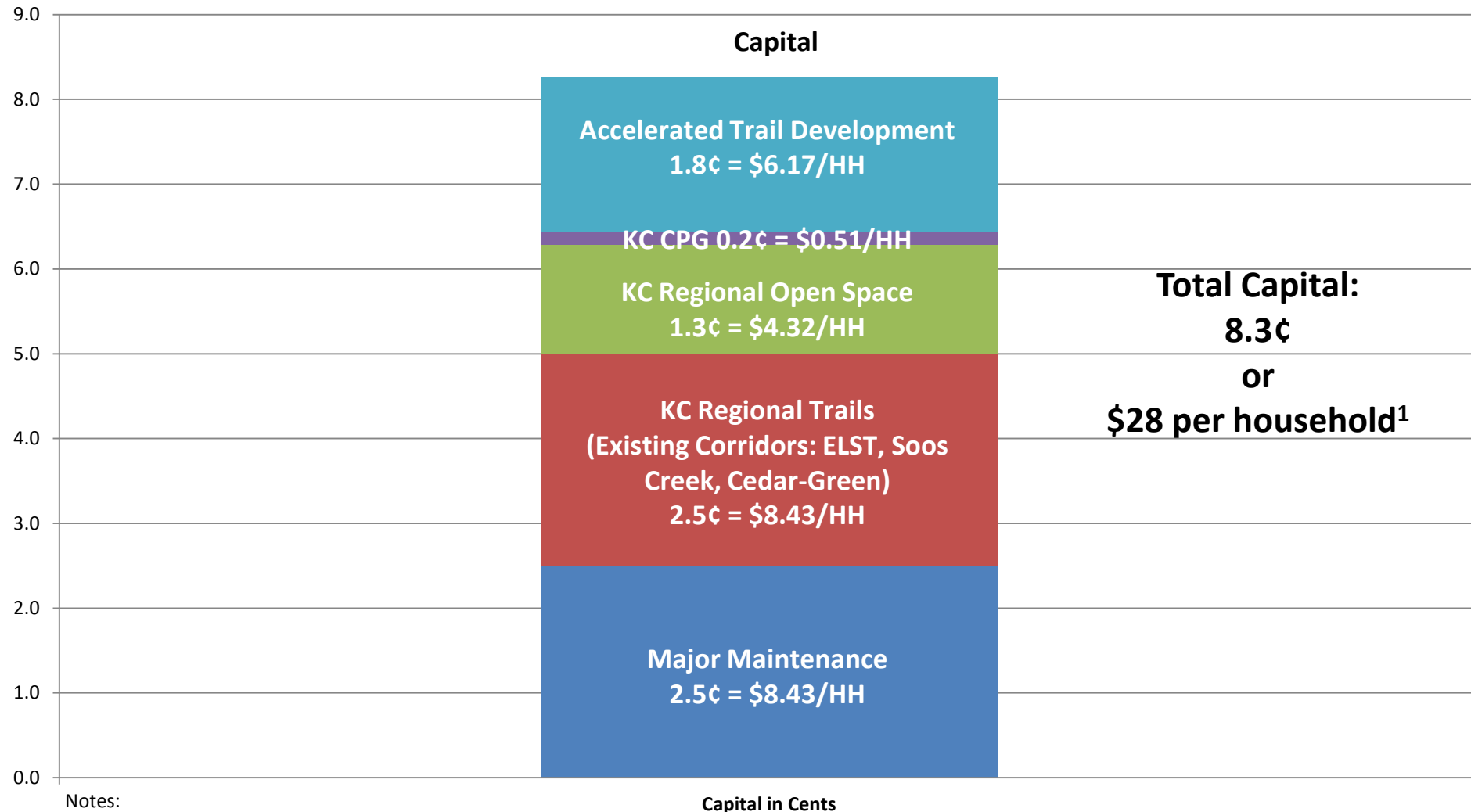
Capital Needs & Opportunities

2014-2019 Options	Annual	Levy Rate	Dollars per Household ¹
1. Major Maintenance	\$8.2M	2.5¢	\$8.43
2. Regional Trails System - Existing Corridors	\$8.2M	2.5¢	\$8.43
3. Regional Open Space Acquisitions	\$4.2M	1.3¢	\$4.32
4. Community Partnerships & Grants Program	\$500K	0.2¢	\$0.51
5. Accelerated Trail Development (BNSF, Lake to Sound)	\$6M	1.8¢	\$6.17
Sum	\$27.1M	8.3¢	\$27.86

Notes:

1. Median household value assumed at \$337K, per PSB/Assessor's Office

2014-2019 Funding Options: Capital



Notes:

1) Median household value assumed at \$337K, per PSB/Assessor's Office

200 PARKS 175 MILES OF TRAIL 26,000 ACRES OF OPEN SPACE

King County Parks **Your Big Backyard** King County

Capital Needs & Opportunities: Take Home Messages

- The major maintenance program has substantial needs in order for us to properly take care of what we have
- Historic opportunities currently exist to invest for the future in the trails, open space, and recreation needs of King County residents
- Proposed strategy is built on policy guidance and public input
- Proposed strategy furthers King County Parks' mission and vision, building on 10 years of a successful transition as a refocused agency

Questions? Comments?



200 PARKS 175 MILES OF TRAIL 26,000 ACRES OF OPEN SPACE

King County Parks **Your**
Big Backyard  King County



Preston Athletic Fields and Community Park