

Agricultural Production District South Snoqualmie River Valley

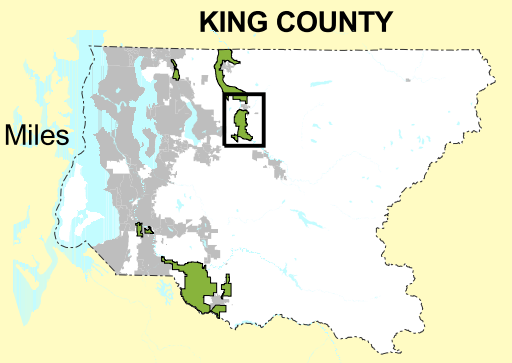


0.3 0 0.3 0.6 Miles

King County
Department of Development and Environmental Services
Geographic Information System

This map is intended for planning purposes only and is not guaranteed to show accurate measurements.

February 16, 2000 File: m:\debbielarview31\apd_ssnrv.apr



CARNATION

SAMMAMISH

